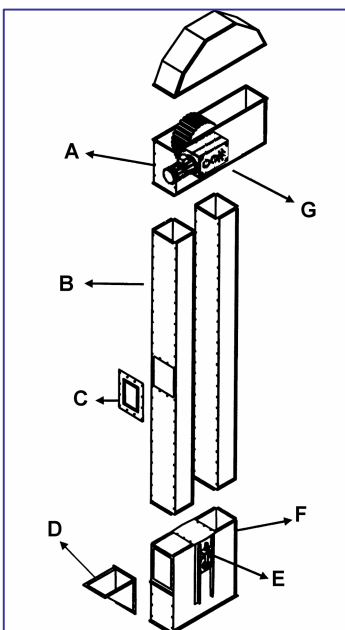
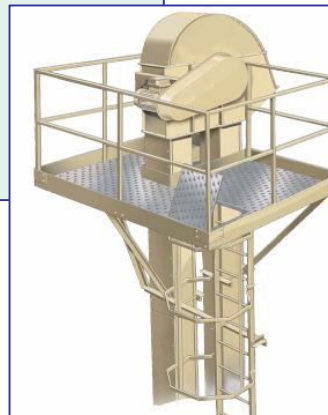


BUCKET ELEVATOR



- A. Elevator Head
- B. Elevator Casings
- C. Inspection Door
- D. Inlet
- E. Speed Detector
- F. Elevator Foot
- G. Gear Motor

Bucket Elevators are ideal for vertical conveying of grain and granular materials.

Made in galvanized heavy duty execution.

Bucket elevators are made in a modular design, easy to assemble due to precision manufacturing.

Standard delivery includes:

Head section with shaft mounted gear-motor, std. gear-motor on the right side, (left side version on request).

Leg sections with strong flanges, one with inspection door.

Modular leg sections are 2500, 1000, 500, 220 mm long.

Special lengths on request.

Heavy duty belt and Hi-Cap steel buckets for long service life and a smooth operation.

Foot section with tensioning device and clean out door.

Optional:

- Belt speed detector
- Back Stop
- Oil resist belt
- Plastic or stainless buckets
- Bucket spacing washers
- In-and outlet transitions
- Dust extraction nozzle

Applications:

Foods:

Flour, Rice, Tea, Sugar, Milk powder, miscellaneous powders, Flakes, Granules

Animal Feeds, Pet Foods & Cereals:

Wheat, Barley, Corn, Oil seeds and their products, Meals, Pellets, Flakes

Chemicals & Minerals:

Cement, Sand, Glass cullet, Asphalt, Limestone, Ores, Coal, Salt, Fertilizers, Fine powders

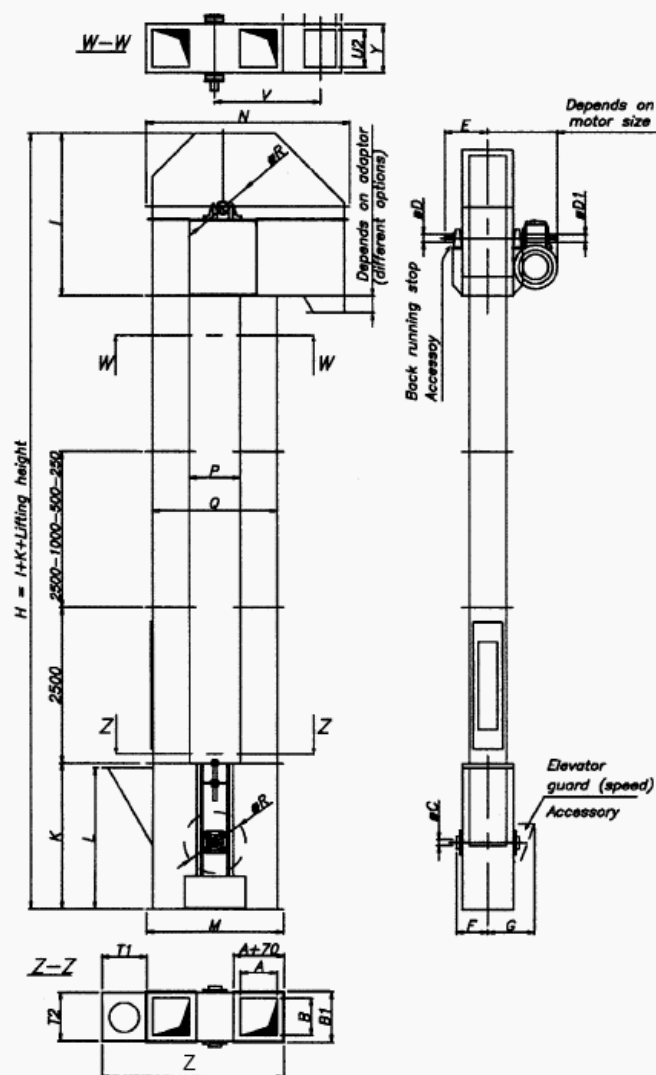


Bucket Elevator

Technical data

Type	KBE 20/40	KBE 60/80	KBE 100/120
A	210	225	240
B	210	285	330
B1	299	366	421
C	40	40	40
D	40	50	60
E	225	275	309
F	187	215	246
G	250	282	313
H	See below	See below	See below
I	840	979	1115
K	797	963	1088
L	767	933	1058
M	753	854	979
N	1060	1176	1316
P	275	347	442
Q	696	797	922
R	309	390	485
T1	254	305	384
T2	267	332	387
U1	207	222	237
U2	207	272	327
V	550	605	674
X	310	323	340
Y	327	392	459
D1	24	32	48
Z	983	1164	1339
Axel dia.	30	38	60
	38	48	

Dimensional (mm)



Type	KBE 20	KBE 40	KBE 60	KBE 80	KBE 100	KBE 120
Capacity, wheat (t/h)	20	40	60	80	100	120
Thickness						
• Elevator head mm	3	3	3	3	4/3	4/3
• Elevator boot, mm	3	3	3	3	4/3	4/3
• Leg sections, mm	1,5	1,5	1,5	1,5	1,5	1,5
Belt width, mm	150	150	200	200	250	250
Buckets, no./m	6	12	8	10,5	7,5	9
Power consumption in relation to elevator leg height, kW	-6,6:1,1 6,6-12:1,5 12,1-23:2,2 23,1-24:3,0	-6,1:2,2 6,1-12:3,0 12,1-20:4,0 20,1-24:5,5	-5,1:3,0 5,1-10:4,0 10,1-17:5,5 17,1-24:7,5	-5,1:4,0 5,1-10:5,5 10,1-18:7,5 18,1-24:9,2	-6,6:5,5 6,7-12:6,7,5 12,7-17:8,9,2 17,8-23:3,11 23,4-25:15	-8,8:7,5 8,9-13:1,9,2 13,2-17,8:11 17,9-25:15

