

FLEXIBLE AUGERS

For conveying materials over long distances



For conveying materials as grain, meal, feedstuffs, pellets, granules, etc

Flexible Augers

For short and long distances – minimum maintenance,
gentle handling – from 550 kg to 4.4 tons per hour

Flexible augers

are available in 75 mm, 90 mm and 125 mm models. The model designation refers to the outer diameter of the plastic pipe.

A Flexible auger ensures direct and efficient conveying – even between buildings.

The maximum conveying length is 60 meters, but the number of bends and/or the texture and density of the conveyed material may reduce the maximum length.

The spiral flight

is available in round and flat versions with different pitches, depending on the model type material to be handled.

The pipes and bends

normally come in durable PEH. The black PEH pipes are flexible and resist bumps and blows. All piping consists of straight pipes and fixed bends assembled by means of sleeves.

Alternatively, we supply white PVC pipes and bends. The PVC pipes are rigid and dimensionally stable, facilitating better pipe suspension.

The drive

can be fitted at the inlet or the discharge end. For long augers or demanding materials it may be necessary to fit motors at both ends. The drive is available with a worm gear motor or a V-belt drive.

The inlet

measures 300x300 mm and has two vertical sides which offer the largest possible inlet length. It matches all silo outlets, either directly or via a 300x300 mm to 500x500 mm adaptor.

The discharge

can be mounted at a 45° or 90° angle using a Ø100, Ø150 or OK-160 flange

Optional equipment

additional outlets and discharge pipes in a range of dimensions can be supplied. We also offer a wide range of adaptors and cover panels that allow the auger feed unit to be mounted on an existing silo.

Wood and beet pellets

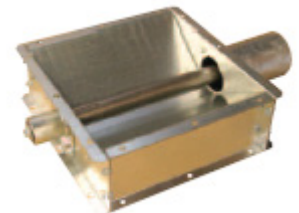
can be conveyed using a special flexible auger. Max. length for this auger: 18 meters.

Nominal capacity

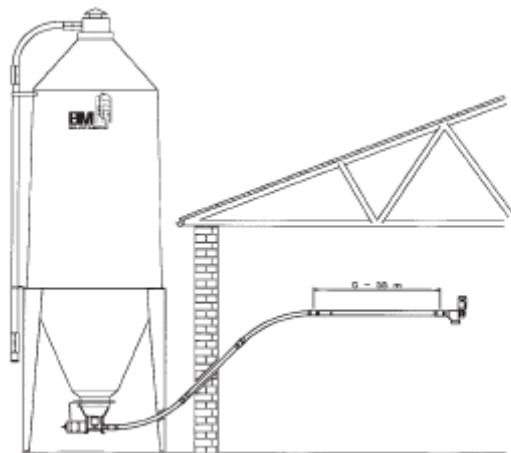
440 RPM for the spiral

Density: 0,65 kg/l

Type	kg/h
75 mm	1100
90 mm	1500
125 mm	4400



Low inlet unit – particularly suitable for wood pellets



White PVC pipes are rigid and dimensional stable