



## NORRES INDUSTRIAL HOSES FUME AND DUST EXTRACTION



Extraction unit, dedusting system,  
filter system, oil mist extraction

Recommended by NORRES customers:

PROTAPE® PUR 301 AS  
PROTAPE® PUR 330 AS  
AIRDUC® PUR 350 AS

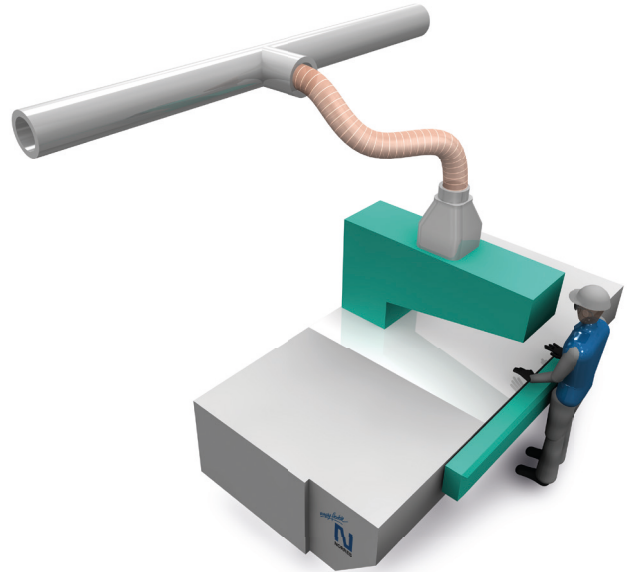
Proven Alternatives:

PROTAPE® PUR 330 AS BLACK  
AIRDUC® PUR 350 AS BLACK  
AIRDUC® PUR 351 FOOD  
PROTAPE® PVC 310  
AIRDUC® PVC 341



Galvanic extraction

PROTAPE® PUR 301 AS  
PROTAPE® PUR 330 AS  
PROTAPE® PVC 310  
AIRDUC® PVC 341  
AIRDUC® PVC 345



Chemical industry: Chemical vapours,  
vapour return hose at loading arm, paint  
steam, spray mist extraction

Recommended by NORRES customers:

PROTAPE® PE 322 EC

Proven Alternatives:

PROTAPE® PUR 301 AS  
PROTAPE® PUR 330 AS  
AIRDUC® PUR 350 AS  
AIRDUC® PE 362 EC  
CP PE 457  
CP PE 457 EC  
CP HYP 450  
CP PTFE/ HYP-INOX 472 EC  
CP VITON® 459 EC  
CP PTFE-INOX 475 FOOD  
CP PTFE-INOX 475 EC  
CP PTFE/HYP-INOX 472  
CP PTFE/GLASS-INOX 471  
CP PTFE/GLASS-INOX 471 EC  
CP Kapton® 476

Extraction arm

Recommended by NORRES customers:

PROTAPE® PVC 371  
PROTAPE® PVC 371 HT

Proven Alternatives:

PROTAPE® PUR 330 AS  
PROTAPE® PUR-INOX 330 FOOD-AS  
PROTAPE® PE 322 EC  
CP PE 457 EC  
PROTAPE® PUR 370  
CP PVC 465  
CP PVC 466 HT  
CP HiTex 467 WELDING  
CP PTFE-INOX 475 FOOD



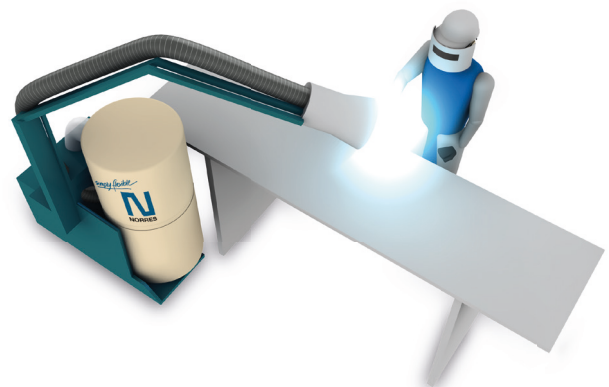
Welding fume extraction

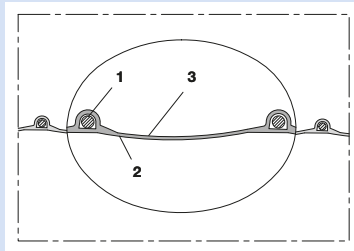
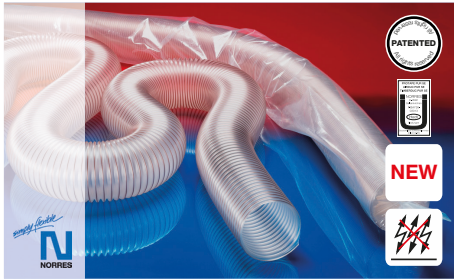
Recommended by NORRES customers:

PROTAPE® PVC 371 HT  
CP HiTex 467 WELDING

Proven Alternatives:

PROTAPE® PUR 301 AS  
PROTAPE® PUR 330 AS  
PROTAPE® PUR 370  
PROTAPE® PVC 371  
CP PVC 465  
CP PVC 466 HT





Antistatic polyurethane hose, super-light, microbe resistant + flame-retardant

**Applications**

- flexible hose/ ducting for gases and for abrasive dust, powder, fibres
- extraction unit, dedusting system, filter system, oil mist extraction
- extraction arm
- chemical industry: chemical vapours, vapour return hose at loading arm, paint steam, spray mist extraction
- explosion hazard area
- animal stall, animal shed: barn ventilation
- bus, utility vehicle, caravan/ trailer, mobile home/ camper/ RV, boat, ship/ vessel/ marine, yacht: ventilation, heating
- clean room ventilation, semiconductor production machine
- bellows, compensators

**Properties**

- super-light weight
- highly flexible + compressible 3:1
- abrasion-resistant

- microbe resistant
- good resistance to oil, gasoline and chemicals
- very good low temperature flexibility
- flame-retardant according to: UL94-HB
- flame-retardant according to: DIN 4102-B1
- permanently antistatic wall: in accordance with ISO 8031 electrical and surface resistance <math><10^9 \Omega</math>
- in accordance with ATEX 2014/34/EU (1999/92/EC) and German TRGS 727: aspiration of combustible dust (zone 22 inside), for conveying of non-flammable liquids, for use in zone 1 and 2 (gases)
- conforms to the safety regulations of the German Wood Trade Association
- according to DIN 26057 Type 1
- conforms to RoHS guideline

**Temperature Range**

- 40°C to 90°C
- short time to 125°C

**Design, Material**

- patented PROTAPE® tape hose
- spring steel wire integrated in wall
  - wall: permanently antistatic premium ester-polyurethane (Pre-PUR®)
  - wall thickness 0,4 mm approx.

**Delivery variants**

- further diameters and lengths available on request
- transparent (standard)
- special colours: partially coloured, completely coloured
- customer-specific branding
- ID 1"/25mm – 12"/305mm compressed packed in poly bag (low transportation cost / risk, minimum storage size), ID315 – 500mm not compressed

I.D.	O.D.	Pressure DIN 26057 (50% Elongation)	Vacuum DIN 26057 (axially fixed)	Bending Radius	Weight	Dimensions in Stock	Order No.
in / mm	mm	bar	bar	mm	kg/m	m	
1,5 / 38	46	0,630 (1,86)	0,245 (0,73)	27	0,220	5 10 15	301-0038-0000
- / 40	48	0,600 (1,77)	0,235 (0,66)	28	0,230	5 10 15	301-0040-0000
1,75 / 44-45	53	0,535 (1,58)	0,210 (0,52)	31	0,255	5 10 15	301-0045-0000
2 / 50-51	58	0,480 (1,42)	0,170 (0,85)	33	0,280	5 10 15	301-0050-0000
2,36 / 60	68	0,405 (1,19)	0,145 (0,59)	38	0,340	5 10 15	301-0060-0000
2,5 / 63-65	73	0,370 (1,09)	0,130 (0,51)	40	0,360	5 10 15	301-0065-0000
- / 70	78	0,345 (1,02)	0,125 (0,44)	43	0,380	5 10 15	301-0070-0000
3 / 75-76	83	0,325 (0,95)	0,115 (0,39)	45	0,410	5 10 15	301-0075-0000
- / 80	88	0,305 (0,89)	0,110 (0,34)	48	0,440	5 10 15	301-0080-0000
3,5 / 89-90	98	0,270 (0,79)	0,095 (0,27)	53	0,490	5 10 15	301-0090-0000
4 / 100-102	108	0,245 (0,71)	0,055 (0,30)	58	0,510	5 10 15	301-0100-0000
- / 110	118	0,220 (0,65)	0,050 (0,25)	63	0,560	5 10 15	301-0110-0000
4,5 / 114-115	123	0,210 (0,62)	0,050 (0,23)	66	0,580	5 10 15	301-0115-0000
4,72 / 120	128	0,205 (0,59)	0,045 (0,21)	68	0,610	5 10 15	301-0120-0000
5 / 125-127	133	0,195 (0,57)	0,045 (0,19)	71	0,630	5 10 15	301-0125-0000
- / 130	138	0,185 (0,55)	0,040 (0,18)	73	0,660	5 10 15	301-0130-0000
5,5 / 140	148	0,175 (0,51)	0,040 (0,15)	78	0,710	5 10 15	301-0140-0000
6 / 150-152	158	0,160 (0,48)	0,035 (0,13)	83	0,760	5 10 15	301-0150-0000
6,3 / 160	168	0,150 (0,45)	0,035 (0,12)	88	0,810	5 10 15	301-0160-0000
6,5 / 165	173	0,150 (0,43)	0,035 (0,11)	91	0,830	5 10 15	301-0165-0000
7 / 178-180	188	0,135 (0,40)	0,030 (0,09)	98	0,900	5 10 15	301-0180-0000
8 / 200-203	208	0,120 (0,36)	0,025 (0,11)	108	1,030	5 10 15	301-0200-0000
- / 225	234	0,110 (0,32)	0,020 (0,08)	122	1,160	5 10	301-0225-0000

Overpressure and underpressure are recommended threshold operating values, products can be subjected to higher loads upon request. The bending radius is measured through the inside of the hose arch. Additional technical data at [www.norres.com](http://www.norres.com). The right to make technical modifications is reserved. All values determined at 20°C and are approx. data.



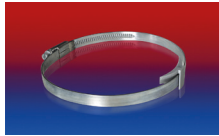
I.D.	O.D.	Pressure DIN 26057 (50% Elongation) bar	Vacuum DIN 26057 (axially fixed) bar	Bending Radius	Weight	Dimensions in Stock	Order No.
in / mm	mm			mm	kg/m	m	
- / 250	259	0,100 (0,29)	0,020 (0,06)	136	1,280	5 10	301-0250-0000
10 / 254	263	0,095 (0,28)	0,020 (0,06)	144	1,300	5 10	301-0254-0000
11 / 280	289	0,085 (0,26)	0,020 (0,05)	149	1,430	5 10	301-0280-0000
- / 300	309	0,080 (0,24)	0,015 (0,04)	159	1,700	5 10	301-0300-0000
12 / 305	315	0,080 (0,23)	0,015 (0,04)	163	1,730	5 10	301-0305-0000
- / 315	325	0,075 (0,23)	0,015 (0,04)	168	1,790	5 10	301-0315-0000
- / 350	360	0,070 (0,20)	0,015 (0,03)	185	2,000	5 10	301-0350-0000
14 / 356	366	0,070 (0,20)	0,015 (0,03)	190	2,100	5 10	301-0356-0000
- / 400	410	0,060 (0,18)	0,015 (0,02)	210	2,260	5 10	301-0400-0000
- / 450	460	0,055 (0,16)	0,010 (0,02)	235	2,520	5 10	301-0450-0000
- / 500	510	0,050 (0,14)	0,010 (0,01)	260	2,780	5 10	301-0500-0000

Overpressure and underpressure are recommended threshold operating values, products can be subjected to higher loads upon request. The bending radius is measured through the inside of the hose arch. The right to make technical modifications is reserved. All values determined at 20°C and are approx. data. Additional technical data at [www.norres.com/en/technology/](http://www.norres.com/en/technology/)

## Accessories



CLAMP 212



CLAMP 210 BRIDGE  
CLAMP



CLAMP 217



CLAMP 213



CONNECT 228

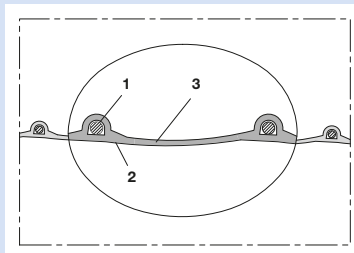
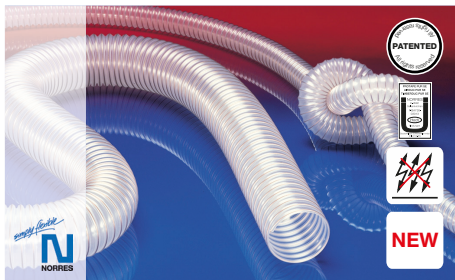


CONNECT 223



CONNECT 270-271

Overpressure and underpressure are recommended threshold operating values, products can be subjected to higher loads upon request. The bending radius is measured through the inside of the hose arch. Additional technical data at [www.norres.com](http://www.norres.com). The right to make technical modifications is reserved. All values determined at 20°C and are approx. data.



Antistatic polyurethane hose, light, microbe resistant + flame-retardant

**Applications**

- flexible hose/ ducting for gases and for abrasive dust, powder, fibres
- printed circuit board drilling machine (PCB)
- extraction unit, dedusting system, filter system, oil mist extraction
- extraction arm
- chemical industry: chemical vapours, vapour return hose at loading arm, paint steam, spray mist extraction
- explosion hazard area
- textile industry, fiber extraction: spinning machine, knitting machine, weaving loom machine
- animal stall, animal shed: barn ventilation
- clean room ventilation, semiconductor production machine
- surface preparation: shot blasting/ sand blasting recovery e.g. at blasting chamber, ship yard, stripping machine, flooring preparation machine, grinding machine
- heating hose: exterior hose as protection hose

**Properties**

- lightweight and reinforced
- highly flexible + compressible 3:1
- abrasion-resistant
- microbe resistant
- good resistance to oil, gasoline and chemicals
- very good low temperature flexibility
- flame-retardant according to: UL94-HB
- flame-retardant according to: DIN 4102-B1
- permanently antistatic wall: in accordance with ISO 8031 electrical and surface resistance <math><10^9 \Omega</math>
- in accordance with ATEX 2014/34/EU (1999/92/EC) and German TRGS 727: aspiration of combustible dust (zone 22 inside), for conveying of non-flammable liquids, for use in zone 1 and 2 (gases)
- conforms to the safety regulations of the German Wood Trade Association
- conforms to RoHS guideline

**Temperature Range**

- 40°C to 90°C
- short time to 125°C

**Design, Material**

- patented PROTAPE® tape hose
- spring steel wire integrated in wall
  - wall: permanently antistatic premium ester-polyurethane (Pre-PUR®)
  - wall thickness 0,6 mm approx.

**Delivery variants**

- further diameters and lengths available on request
- transparent (standard)
- special colours: partially coloured, completely coloured
- customer-specific branding

I.D.	O.D.	Pressure DIN 26057 (50% Elongation) bar	Vacuum DIN 26057 (axially fixed) bar	Bending Radius mm	Weight kg/m	Dimensions in Stock m	Order No.
1 / 25	32	1,605 (4,18)	0,540 (1,00)	20	0,15	5 10 15	330-0025-1002
- / 30	37	1,350 (3,50)	0,450 (1,00)	22	0,18	5 10 15	330-0030-1002
1,25 / 32	39	1,265 (3,29)	0,420 (1,00)	23	0,19	5 10 15	330-0032-1002
1,5 / 38	45	1,075 (2,78)	0,355 (0,77)	26	0,22	5 10 15	330-0038-1002
- / 40	47	1,020 (2,64)	0,335 (0,69)	27	0,23	5 10 15	330-0040-1002
2 / 50-51	58	0,820 (2,12)	0,220 (0,87)	33	0,37	5 10 15	330-0050-1002
2,36 / 60	68	0,685 (1,77)	0,180 (0,61)	38	0,43	5 10 15	330-0060-1002
2,5 / 63-65	73	0,635 (1,64)	0,165 (0,52)	41	0,46	5 10 15	330-0065-1002
- / 70	78	0,590 (1,52)	0,155 (0,45)	43	0,5	5 10 15	330-0070-1002
3 / 75-76	83	0,550 (1,42)	0,145 (0,40)	46	0,53	5 10 15	330-0075-1002
- / 80	88	0,515 (1,33)	0,135 (0,35)	48	0,57	5 10 15	330-0080-1002
3,5 / 89-90	98	0,460 (1,19)	0,120 (0,28)	53	0,63	5 10 15	330-0090-1002
4 / 100-102	108	0,415 (1,07)	0,080 (0,31)	58	0,67	5 10 15	330-0100-1002
- / 110	118	0,375 (0,97)	0,070 (0,26)	63	0,73	5 10 15	330-0110-1002
4,5 / 114-115	123	0,360 (0,93)	0,070 (0,24)	66	0,76	5 10 15	330-0115-1002
4,72 / 120	128	0,345 (0,89)	0,065 (0,22)	68	0,79	5 10 15	330-0120-1002
5 / 125-127	133	0,335 (0,86)	0,065 (0,20)	71	0,83	5 10 15	330-0125-1002
- / 130	138	0,320 (0,82)	0,060 (0,19)	73	0,86	5 10 15	330-0130-1002
5,5 / 140	148	0,295 (0,76)	0,055 (0,16)	78	0,92	5 10 15	330-0140-1002
6 / 150-152	158	0,275 (0,71)	0,055 (0,14)	83	0,99	5 10 15	330-0150-1002
6,3 / 160	168	0,260 (0,67)	0,050 (0,12)	88	1,05	5 10 15	330-0160-1002
- / 170	178	0,245 (0,63)	0,045 (0,11)	93	1,11	5 10 15	330-0170-1002
- / 175	183	0,240 (0,61)	0,045 (0,10)	96	1,14	5 10 15	330-0175-1002

Overpressure and underpressure are recommended threshold operating values, products can be subjected to higher loads upon request. The bending radius is measured through the inside of the hose arch. Additional technical data at [www.norres.com](http://www.norres.com). The right to make technical modifications is reserved. All values determined at 20°C and are approx. data.



I.D.	O.D.	Pressure DIN 26057 (50% Elongation) bar	Vacuum DIN 26057 (axially fixed) bar	Bending Radius mm	Weight kg/m	Dimensions in Stock m	Order No.
in / mm	mm						
7 / 178-180	188	0,230 (0,59)	0,045 (0,10)	98	1,17	5 10 15	330-0180-1002
8 / 200-203	208	0,210 (0,54)	0,030 (0,11)	108	1,33	5 10 15	330-0200-1002
- / 225	233	0,185 (0,48)	0,025 (0,09)	121	1,48	5 10	330-0225-1002
- / 250	258	0,165 (0,43)	0,025 (0,07)	133	1,64	5 10	330-0250-1002
10 / 254	262	0,165 (0,42)	0,025 (0,06)	135	1,66	5 10	330-0254-1002
11 / 280	288	0,150 (0,38)	0,020 (0,05)	148	1,83	5 10	330-0280-1002
- / 300	309	0,140 (0,36)	0,020 (0,05)	159	2,14	5 10	330-0300-1002
12 / 305	314	0,135 (0,35)	0,020 (0,05)	162	2,17	5 10	330-0305-1002
- / 315	324	0,135 (0,34)	0,020 (0,05)	167	2,24	5 10	330-0315-1002
- / 350	359	0,120 (0,31)	0,020 (0,04)	184	2,49	5 10	330-0350-1002
14 / 356	365	0,115 (0,30)	0,015 (0,03)	187	2,53	5 10	330-0356-1002
- / 400	409	0,105 (0,27)	0,015 (0,02)	209	2,84	5 10	330-0400-1002
- / 450	459	0,095 (0,24)	0,015 (0,02)	234	3,19	5 10	330-0450-1002
- / 500	510	0,085 (0,21)	0,015 (0,02)	260	4,39	5 10	330-0500-1002

Overpressure and underpressure are recommended threshold operating values, products can be subjected to higher loads upon request. The bending radius is measured through the inside of the hose arch. The right to make technical modifications is reserved. All values determined at 20°C and are approx. data. Additional technical data at [www.norres.com/en/technology/](http://www.norres.com/en/technology/)

## Accessories



CLAMP 212



CLAMP 210 BRIDGE  
CLAMP



CLAMP 217



CLAMP 213



CONNECT 228

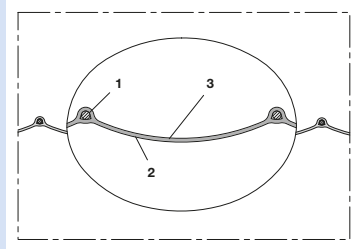
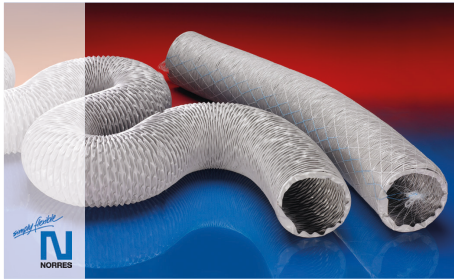


CONNECT 223



CONNECT 270-271

Overpressure and underpressure are recommended threshold operating values, products can be subjected to higher loads upon request. The bending radius is measured through the inside of the hose arch. Additional technical data at [www.norres.com](http://www.norres.com). The right to make technical modifications is reserved. All values determined at 20°C and are approx. data.



PVC ducting, (to +110°C)

**Applications**

- flexible hose/ ducting for gases
- welding fume extraction
- extraction arm
- animal stall, animal shed: barn ventilation
- construction industry: tunnel ventilation
- bus, utility vehicle, caravan/ trailer, mobile home/ camper/ RV, boat, ship/ vessel/ marine, yacht: ventilation, heating
- asbestos removal
- construction drying
- tent heating, airport gangway heating, heaters for construction sites
- clean room ventilation, semiconductor production machine

- heating system/ heater: fresh air supply

**Properties**

- fabric reinforced
- super-light weight
- highly flexible + compressible 6:1
- good resistance to alkalis and acids
- good resistance to chemicals
- flame-retardant wall according to: NF P 92-503 M2
- conforms to RoHS guideline

**Temperature Range**

- 10°C to 80°C
- short time to 110°C

**Design, Material**

PROTAPE® tape hose

- spring steel wire integrated in wall
- fabric-reinforced tape; wall: PVC coated fabric
- wall thickness 0,25 mm approx.

**Delivery variants**

- further diameters and lengths available on request
- grey (standard), black, white
- customer-specific branding
- compressed packed in poly bag (low transportation cost / risk, minimum storage size)

I.D.	O.D.	Over-pressure	Under-pressure	Bending Radius	Weight	Dimensions in Stock	Further Production Lengths	Order No.
in / mm	mm	bar	bar	mm	kg/m	m	m	
<b>Colour grey</b>								
- / 40	43	0,300	0,170	23	0,100	6 10	-	371-0040-0000
2 / 50-51	54	0,240	0,145	29	0,120	6 10	-	371-0051-0000
2,36 / 60	63	0,200	0,110	33	0,140	6 10	-	371-0060-0000
3 / 75-76	79	0,160	0,080	41	0,180	6 10	-	371-0076-0000
- / 80	83	0,150	0,080	43	0,190	6 10	-	371-0080-0000
3,5 / 89-90	93	0,135	0,070	48	0,200	6 10	-	371-0090-0000
4 / 100-102	105	0,120	0,050	54	0,240	6 10	-	371-0102-0000
- / 110	113	0,110	0,045	58	0,270	6 10	-	371-0110-0000
5 / 125-127	130	0,095	0,035	67	0,320	6 10	-	371-0127-0000
5,5 / 140	143	0,085	0,035	73	0,350	6 10	-	371-0140-0000
6 / 150-152	155	0,080	0,035	79	0,370	6 10	-	371-0152-0000
6,3 / 160	163	0,075	0,020	83	0,440	6 10	-	371-0160-0000
7 / 178-180	183	0,065	0,020	93	0,540	6 10	-	371-0180-0000
8 / 200-203	206	0,060	0,020	105	0,600	6 10	-	371-0203-0000
10 / 254	258	0,045	0,015	131	0,790	6 10	-	371-0254-0000
12 / 305	309	0,040	0,010	157	0,950	6 10	-	371-0305-0000
14 / 356	360	0,035	0,010	182	1,110	6 10	-	371-0356-0000
16 / 405-406	410	0,030	0,005	207	1,280	6 10	-	371-0406-0000
20 / 508	514	0,025	0,005	260	1,560	6 10	-	371-0508-0000
<b>Colour black</b>								
1,5 / 38	41	0,315	0,175	22	0,095	-	7,5 15	371-0038-0001
- / 40	43	0,300	0,170	23	0,100	-	7,5 15	371-0040-0001
2 / 50-51	54	0,240	0,145	29	0,120	-	7,5 15	371-0051-0001
2,36 / 60	63	0,200	0,110	33	0,140	-	7,5 15	371-0060-0001
2,5 / 63-65	68	0,185	0,105	36	0,155	-	7,5 15	371-0065-0001

Overpressure and underpressure are recommended threshold operating values, products can be subjected to higher loads upon request. The bending radius is measured through the inside of the hose arch. Additional technical data at [www.norres.com](http://www.norres.com). The right to make technical modifications is reserved. All values determined at 20°C and are approx. data.



I.D.	O.D.	Over-pressure	Under-pressure	Bending Radius	Weight	Dimensions in Stock	Further Production Lengths	Order No.
in / mm	mm	bar	bar	mm	kg/m	m	m	
3 / 75-76	79	0,160	0,080	41	0,180	-	7,5 15	371-0076-0001
- / 80	83	0,150	0,080	43	0,190	-	7,5 15	371-0080-0001
3,5 / 89-90	93	0,135	0,070	48	0,200	-	7,5 15	371-0090-0001
4 / 100-102	105	0,120	0,050	54	0,240	-	7,5 15	371-0102-0001
- / 110	113	0,110	0,045	58	0,270	-	7,5 15	371-0110-0001
4,5 / 114-115	118	0,105	0,040	61	0,285	-	7,5 15	371-0115-0001
5 / 125-127	130	0,095	0,035	67	0,320	-	7,5 15	371-0127-0001
5,5 / 140	143	0,085	0,035	73	0,350	-	7,5 15	371-0140-0001
6 / 150-152	155	0,080	0,035	79	0,370	-	7,5 15	371-0152-0001
6,3 / 160	163	0,075	0,020	83	0,440	-	7,5 15	371-0160-0001
6,5 / 165	168	0,075	0,020	86	0,465	-	7,5 15	371-0165-0001
7 / 178-180	183	0,065	0,020	93	0,540	-	7,5 15	371-0180-0001
8 / 200-203	206	0,060	0,020	105	0,600	-	7,5 15	371-0203-0001
- / 250	254	0,050	0,015	129	0,775	-	7,5 15	371-0250-0001
10 / 254	258	0,045	0,015	131	0,790	-	7,5 15	371-0254-0001
- / 300	304	0,040	0,010	154	0,935	-	7,5 15	371-0300-0001
12 / 305	309	0,040	0,010	157	0,950	-	7,5 15	371-0305-0001
- / 350	354	0,035	0,010	179	1,090	-	7,5	371-0350-0001
14 / 356	360	0,035	0,010	182	1,110	-	7,5	371-0356-0001
- / 400	404	0,030	0,010	204	1,260	-	7,5	371-0400-0001
16 / 405-406	410	0,030	0,005	207	1,280	-	7,5	371-0406-0001
- / 500	506	0,025	0,005	256	1,540	-	7,5	371-0500-0001
20 / 508	514	0,025	0,005	260	1,560	-	7,5	371-0508-0001
<b>Colour white</b>								
1,5 / 38	41	0,315	0,175	22	0,095	-	7,5 15	371-0038-0010
- / 40	43	0,300	0,170	23	0,100	-	7,5 15	371-0040-0010
2 / 50-51	54	0,240	0,145	29	0,120	-	7,5 15	371-0051-0010
2,36 / 60	63	0,200	0,110	33	0,140	-	7,5 15	371-0060-0010
2,5 / 63-65	68	0,185	0,105	36	0,155	-	7,5 15	371-0065-0010
3 / 75-76	79	0,160	0,080	41	0,180	-	7,5 15	371-0076-0010
- / 80	83	0,150	0,080	43	0,190	-	7,5 15	371-0080-0010
3,5 / 89-90	93	0,135	0,070	48	0,200	-	7,5 15	371-0090-0010
4 / 100-102	105	0,120	0,050	54	0,240	-	7,5 15	371-0102-0010
- / 110	113	0,110	0,045	58	0,270	-	7,5 15	371-0110-0010
4,5 / 114-115	118	0,105	0,040	61	0,285	-	7,5 15	371-0115-0010
5 / 125-127	130	0,095	0,035	67	0,320	-	7,5 15	371-0127-0010
5,5 / 140	143	0,085	0,035	73	0,350	-	7,5 15	371-0140-0010
6 / 150-152	155	0,080	0,035	79	0,370	-	7,5 15	371-0152-0010
6,3 / 160	163	0,075	0,020	83	0,440	-	7,5 15	371-0160-0010
6,5 / 165	168	0,075	0,020	86	0,465	-	7,5 15	371-0165-0010
7 / 178-180	183	0,065	0,020	93	0,540	-	7,5 15	371-0180-0010
8 / 200-203	206	0,060	0,020	105	0,600	-	7,5 15	371-0203-0010
- / 250	254	0,050	0,015	129	0,775	-	7,5 15	371-0250-0010
10 / 254	258	0,045	0,015	131	0,790	-	7,5 15	371-0254-0010
- / 300	304	0,040	0,010	154	0,935	-	7,5 15	371-0300-0010
12 / 305	309	0,040	0,010	157	0,950	-	7,5 15	371-0305-0010
- / 350	354	0,035	0,010	179	1,090	-	7,5	371-0350-0010
14 / 356	360	0,035	0,010	182	1,110	-	7,5	371-0356-0010
- / 400	404	0,030	0,010	204	1,260	-	7,5	371-0400-0010

Overpressure and underpressure are recommended threshold operating values, products can be subjected to higher loads upon request. The bending radius is measured through the inside of the hose arch. Additional technical data at [www.norres.com](http://www.norres.com). The right to make technical modifications is reserved. All values determined at 20°C and are approx. data.

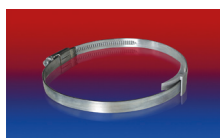




I.D.	O.D.	Over-pressure	Under-pressure	Bending Radius	Weight	Dimensions in Stock	Further Production Lengths	Order No.
in / mm	mm	bar	bar	mm	kg/m	m	m	
16 / 405-406	410	0,030	0,005	207	1,280	-	7,5	371-0406-0010
- / 500	506	0,025	0,005	256	1,540	-	7,5	371-0500-0010
20 / 508	514	0,025	0,005	260	1,560	-	7,5	371-0508-0010

Overpressure and underpressure are recommended threshold operating values, products can be subjected to higher loads upon request. The bending radius is measured through the inside of the hose arch. The right to make technical modifications is reserved. All values determined at 20°C and are approx. data. Additional technical data at [www.norres.com/en/technology/](http://www.norres.com/en/technology/)

### Accessories



CLAMP 210 BRIDGE CLAMP



CLAMP 208



CONNECT 228

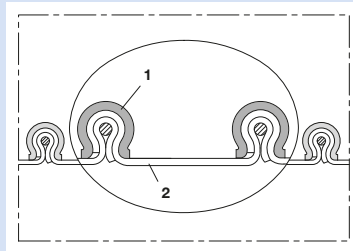


CONNECT 223



CONNECT 270-271

Overpressure and underpressure are recommended threshold operating values, products can be subjected to higher loads upon request. The bending radius is measured through the inside of the hose arch. Additional technical data at [www.norres.com](http://www.norres.com). The right to make technical modifications is reserved. All values determined at 20°C and are approx. data.



Clamp profile hose (clip hose) for flying sparks or welding sparks, (to +280°C)

### Applications

- flexible hose/ ducting for gases and for dust, powder, fibres
- welding fume extraction
- extraction arm

### Properties

- very good resistance to flying sparks and welding sparks
- fabric reinforced
- abrasion protection via external clamp profile
- secure clamping of the wall within the clamp profile

- highly flexible + compressible
- extremely heat resistant
- flame-retardant
- conforms to RoHS guideline

### Temperature Range

- 70°C to 260°C
- short time to 280°C

### Design, Material

CP construction

- clamp profile supporting spiral: galvanised steel
- fabric-reinforced tape; wall: special-coated high-

temperature fabric

### Delivery variants

- further diameters and lengths available on request
- black (standard)
- stainless steel (INOX) clamp profile
- double-layer

I.D.	O.D.	Over-pressure	Under-pressure	Bending Radius	Weight	Dimensions in Stock	Order No.
in / mm	mm	bar	bar	mm	kg/m	m	
2 / 50-51	62	0,850	0,320	18	0,680	6	467-0050-0000
- / 55	67	0,820	0,260	20	0,740	6	467-0055-0000
2,36 / 60	72	0,720	0,220	20	0,800	6	467-0060-0000
2,5 / 63-65	77	0,680	0,200	22	0,860	6	467-0065-0000
- / 70	82	0,650	0,170	22	0,920	6	467-0070-0000
3 / 75-76	87	0,620	0,145	24	0,980	6	467-0075-0000
- / 80	92	0,600	0,120	24	1,040	6	467-0080-0000
3,5 / 89-90	102	0,550	0,105	26	1,160	6	467-0090-0000
4 / 100-102	112	0,520	0,090	28	0,950	6	467-0100-0000
- / 110	122	0,480	0,070	30	1,040	36	467-0110-0000
4,5 / 114-115	127	0,400	0,065	32	1,090	36	467-0115-0000
4,72 / 120	132	0,350	0,060	32	1,130	36	467-0120-0000
5 / 125-127	137	0,320	0,055	34	1,180	36	467-0125-0000
- / 130	142	0,280	0,050	34	1,220	36	467-0130-0000
5,5 / 140	152	0,250	0,045	36	1,310	36	467-0140-0000
6 / 150-152	162	0,220	0,040	38	0,950	36	467-0150-0000
6,3 / 160	172	0,210	0,035	40	1,010	36	467-0160-0000
6,5 / 165	177	0,205	0,035	41	1,040	36	467-0165-0000
- / 170	182	0,200	0,030	42	1,070	36	467-0170-0000
- / 175	187	0,190	0,025	44	1,100	36	467-0175-0000
7 / 178-180	192	0,180	0,022	44	1,130	36	467-0180-0000
8 / 200-203	212	0,150	0,020	48	1,250	36	467-0200-0000
- / 215	227	0,130	0,018	52	1,340	36	467-0215-0000
- / 225	237	0,110	0,016	54	1,400	36	467-0225-0000
9 / 228-229	240	0,110	0,015	54	1,420	36	467-0228-0000
- / 250	262	0,100	0,012	58	1,560	36	467-0250-0000
10 / 254	266	0,095	0,010	59	1,585	36	467-0254-0000
- / 275	287	0,080	0,010	64	1,710	36	467-0275-0000
11 / 280	292	0,080	0,010	65	1,740	36	467-0280-0000
- / 300	312	0,070	0,009	68	1,860	36	467-0300-0000

Overpressure and underpressure are recommended threshold operating values, products can be subjected to higher loads upon request. The bending radius is measured through the inside of the hose arch. Additional technical data at [www.norres.com](http://www.norres.com). The right to make technical modifications is reserved. All values determined at 20°C and are approx. data.



I.D.	O.D.	Over-pressure	Under-pressure	Bending Radius	Weight	Dimensions in Stock	Order No.
in / mm	mm	bar	bar	mm	kg/m	m	
12 / 305	317	0,070	0,010	69	1,890	3 6	467-0305-0000
- / 315	327	0,063	0,008	71	1,950	3 6	467-0315-0000
- / 325	337	0,060	0,007	74	2,030	3 6	467-0325-0000
13 / 330	342	0,060	0,007	75	2,055	3 6	467-0330-0000
- / 350	362	0,055	0,006	78	2,160	3 6	467-0350-0000
14 / 356	368	0,055	0,005	79	2,185	3 6	467-0356-0000
- / 375	387	0,050	0,005	83	2,260	3 6	467-0375-0000
- / 400	412	0,048	0,005	88	2,470	3 6	467-0400-0000
16 / 405-406	418	0,048	0,005	89	2,505	3 6	467-0406-0000
- / 450	462	0,045	0,004	98	2,770	3 6	467-0450-0000
18 / 457	469	0,045	0,004	100	2,810	3 6	467-0457-0000
- / 500	512	0,042	0,003	108	3,070	3 6	467-0500-0000
20 / 508	520	0,040	0,003	110	3,120	3 6	467-0508-0000
- / 600	612	0,038	0,002	128	3,680	3 6	467-0600-0000
24 / 610	622	0,035	0,002	130	3,740	3 6	467-0610-0000
- / 700	712	0,030	0,002	148	4,290	3 6	467-0700-0000
28 / 712	724	0,030	0,002	151	4,365	3 6	467-0712-0000
- / 750	762	0,025	0,001	158	4,600	3 6	467-0750-0000
- / 800	812	0,020	0,001	168	4,900	3 6	467-0800-0000
32 / 813-815	827	0,020	0,001	171	4,990	3 6	467-0815-0000
- / 900	912	0,015	0,001	188	5,500	3 6	467-0900-0000
36 / 915	927	0,015	0,001	191	5,590	3 6	467-0915-0000
- / 1000	1012	0,015	0,001	208	6,110	3 6	467-1000-0000
40 / 1016	1028	0,015	0,001	211	6,210	3 6	467-1016-0000

Overpressure and underpressure are recommended threshold operating values, products can be subjected to higher loads upon request. The bending radius is measured through the inside of the hose arch. The right to make technical modifications is reserved. All values determined at 20°C and are approx. data. Additional technical data at [www.norres.com/en/technology/](http://www.norres.com/en/technology/)

Accessories



CLAMP 212



CLAMP 217



CLAMP 213

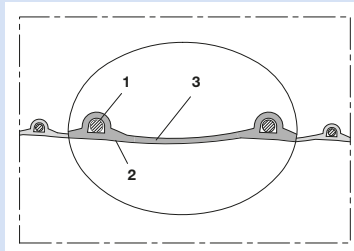


CONNECT 228



CONNECT 270-271

Overpressure and underpressure are recommended threshold operating values, products can be subjected to higher loads upon request. The bending radius is measured through the inside of the hose arch. Additional technical data at [www.norres.com](http://www.norres.com). The right to make technical modifications is reserved. All values determined at 20°C and are approx. data.



Antistatic polyurethane hose, light, black

### Applications

- flexible hose/ ducting for gases and for abrasive dust, powder, fibres
- extraction unit, dedusting system, filter system, oil mist extraction
- extraction arm
- explosion hazard area
- textile industry, fiber extraction: spinning machine, knitting machine, weaving loom machine
- animal stall, animal shed: barn ventilation
- clean room ventilation, semiconductor production machine
- surface preparation: shot blasting/ sand blasting recovery e.g. at blasting chamber, ship yard, stripping machine, flooring preparation machine, grinding machine
- heating hose: exterior hose as protection hose

### Properties

- lightweight and reinforced
- highly flexible + compressible 3:1
- abrasion-resistant
- good resistance to oil, gasoline and chemicals
- very good low temperature flexibility
- permanently antistatic wall: in accordance with ISO 8031 electrical and surface resistance  $<10^9 \Omega$
- in accordance with ATEX 2014/34/EU (1999/92/EC) and German TRGS 727: aspiration of combustible dust (zone 22 inside), for conveying of non-flammable liquids, for use in zone 1 and 2 (gases)
- conforms to RoHS guideline

### Temperature Range

- 40°C to 90°C

- short time to 125°C

### Design, Material

patented PROTAPE® tape hose

- spring steel wire integrated in wall
- wall: permanently antistatic premium ester-polyurethane (Pre-PUR®)
- wall thickness 0,6 mm approx.

### Delivery variants

- further diameters and lengths available on request
- black (standard)
- special colours: partially coloured, completely coloured
- customer-specific branding

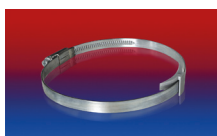
I.D. in / mm	O.D. mm	Pressure DIN 26057 (50% Elongation) bar	Vacuum DIN 26057 (axially fixed) bar	Bending Radius mm	Weight kg/m	Dimensions in Stock m	Order No.
- / 40	47	1,020 (2,64)	0,335 (0,69)	27	0,23	10	330-0040-3030
2 / 50-51	58	0,820 (2,12)	0,220 (0,87)	33	0,37	10	330-0050-3030
2,36 / 60	68	0,685 (1,77)	0,180 (0,61)	38	0,43	10	330-0060-3030
3 / 75-76	83	0,550 (1,42)	0,145 (0,40)	46	0,54	10	330-0075-3030
- / 80	88	0,515 (1,33)	0,135 (0,35)	48	0,57	10	330-0080-3030
4 / 100-102	108	0,415 (1,07)	0,080 (0,31)	58	0,68	10	330-0100-3030
4,72 / 120	128	0,345 (0,89)	0,065 (0,22)	68	0,8	10	330-0120-3030
5 / 125-127	133	0,335 (0,86)	0,065 (0,20)	71	0,84	10	330-0125-3030
5,5 / 140	148	0,295 (0,76)	0,055 (0,16)	78	0,92	10	330-0140-3030
6 / 150-152	158	0,275 (0,71)	0,055 (0,14)	83	1	10	330-0150-3030
6,3 / 160	168	0,260 (0,67)	0,050 (0,12)	88	1,05	10	330-0160-3030
8 / 200-203	208	0,210 (0,54)	0,030 (0,11)	108	1,34	10	330-0200-3030

Overpressure and underpressure are recommended threshold operating values, products can be subjected to higher loads upon request. The bending radius is measured through the inside of the hose arch. The right to make technical modifications is reserved. All values determined at 20°C and are approx. data. Additional technical data at [www.norres.com/en/technology/](http://www.norres.com/en/technology/)

## Accessories



CLAMP 212



CLAMP 210 BRIDGE CLAMP



CLAMP 217



CLAMP 213



CONNECT 228



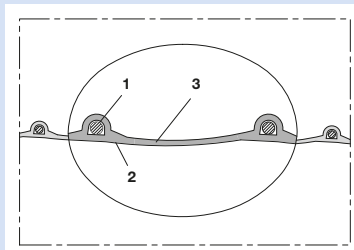
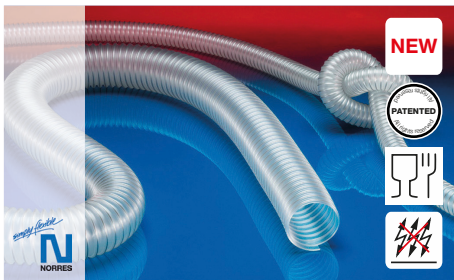
CONNECT 223

Overpressure and underpressure are recommended threshold operating values, products can be subjected to higher loads upon request. The bending radius is measured through the inside of the hose arch. Additional technical data at [www.norres.com](http://www.norres.com). The right to make technical modifications is reserved. All values determined at 20°C and are approx. data.



CONNECT 270-271

Overpressure and underpressure are recommended threshold operating values, products can be subjected to higher loads upon request. The bending radius is measured through the inside of the hose arch. Additional technical data at [www.norres.com](http://www.norres.com). The right to make technical modifications is reserved. All values determined at 20°C and are approx. data.



Antistatic food hose and pharmaceutical hose, light, stainless steel (INOX)

**Applications**

- flexible hose/ ducting for gases and for abrasive dust, powder, fibres
- food industry, pharmaceutical industry: foodstuff, pharmaceutical
- conveying of dry foods e.g. rice, cereals, sugar, milk powder, powders, coffee, tea, grains, flour, frozen foods
- mixer, dryer, packaging machine, bulk-bag (big bag)-charging and discharging, mill
- extraction arm
- explosion hazard area

**Properties**

- lightweight and reinforced
- highly flexible + compressible 3:1
- abrasion-resistant
- Approved by an independent testing laboratory for the complete hose acc. to EU-Directive 10/2011 and EC 1935/2004 and the latest

EU-Directive 2015/174, food grade polyurethane, complies with: FDA 21 CFR 177.2600

- Approval acc. to EU-Directive 10/2011 (food simulant E) and EC 1935/2004
- odourless and tasteless
- microbe and hydrolysis resistant
- good resistance to oil, gasoline and chemicals
- very good low temperature flexibility
- permanently antistatic wall: in accordance with ISO 8031 electrical and surface resistance <math><10^9 \Omega</math> and in accordance with TRGS 727 <math><2,5 \* 10^8 \Omega</math>
- in accordance with ATEX 2014/34/EU (1999/92/EC) and German TRGS 727: pneumatic transport of flammable dusts and bulk materials (Zone 20, 21, 22 inside), aspiration of combustible dusts (Zone 22 inside), for conveying for flammable liquids (inside zone 0, 1, 2), for conveying for non-flammable liquids, for use in zone 1 and 2 (gases), for use in zone 0 (gases)
- manufacturing process acc. GMP EC 2023/2006

- conforms to RoHS guideline

**Temperature Range**

- 40°C to 90°C

**Design, Material**

patented PROTAPE® tape hose

- spring steel wire integrated in wall; spiral: stainless steel wire (INOX)
- wall: permanently antistatic premium ether-polyurethane (Pre-PUR®)
- wall thickness 0,6 mm approx.

**Delivery variants**

- further diameters and lengths available on request
- transparent (standard)
- customer-specific branding

I.D.	O.D.	Pressure DIN 26057 (50% Elongation) bar	Vacuum DIN 26057 (axially fixed) bar	Bending Radius mm	Weight kg/m	Dimensions in Stock m	Order No.
in / mm	mm						
1,5 / 38	45	1,075 (4,36)	0,355 (0,77)	26	0,22	5 10	330-0038-1018
- / 40	47	1,020 (4,15)	0,335 (0,69)	27	0,24	5 10	330-0040-1018
2 / 50-51	58	0,820 (3,34)	0,220 (0,87)	33	0,38	5 10	330-0050-1018
2,36 / 60	68	0,685 (2,80)	0,180 (0,61)	38	0,44	5 10	330-0060-1018
2,5 / 63-65	73	0,635 (2,59)	0,165 (0,52)	41	0,47	5 10	330-0065-1018
- / 70	78	0,590 (2,41)	0,155 (0,45)	43	0,51	5 10	330-0070-1018
3 / 75-76	83	0,550 (2,25)	0,145 (0,40)	46	0,55	5 10	330-0075-1018
- / 80	88	0,515 (2,11)	0,135 (0,35)	48	0,58	5 10	330-0080-1018
4 / 100-102	108	0,415 (1,70)	0,080 (0,31)	58	0,69	5 10	330-0100-1018
5 / 125-127	133	0,335 (1,36)	0,065 (0,20)	71	0,85	5 10	330-0125-1018
6 / 150-152	158	0,275 (1,14)	0,055 (0,14)	83	1,01	5 10	330-0150-1018
6,3 / 160	168	0,260 (1,07)	0,050 (0,12)	88	1,07	5 10	330-0160-1018
7 / 178-180	188	0,230 (0,95)	0,045 (0,10)	98	1,2	5 10	330-0180-1018
8 / 200-203	208	0,210 (0,85)	0,030 (0,11)	108	1,35	5 10	330-0200-1018
- / 250	258	0,165 (0,68)	0,025 (0,07)	133	1,67	5 10	330-0250-1018
- / 300	308	0,140 (0,57)	0,020 (0,05)	158	2,17	5 10	330-0300-1018

Overpressure and underpressure are recommended threshold operating values, products can be subjected to higher loads upon request. The bending radius is measured through the inside of the hose arch. The right to make technical modifications is reserved. All values determined at 20°C and are approx. data. Additional technical data at [www.norres.com/en/technology/](http://www.norres.com/en/technology/)

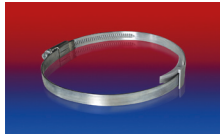
Overpressure and underpressure are recommended threshold operating values, products can be subjected to higher loads upon request. The bending radius is measured through the inside of the hose arch. Additional technical data at [www.norres.com](http://www.norres.com). The right to make technical modifications is reserved. All values determined at 20°C and are approx. data.



Accessories



CLAMP 212



CLAMP 210 BRIDGE CLAMP



CLAMP 217



CLAMP 213



CONNECT 228

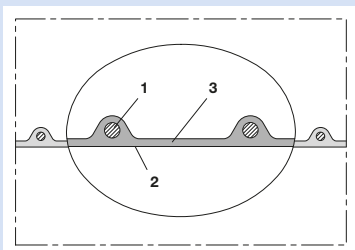
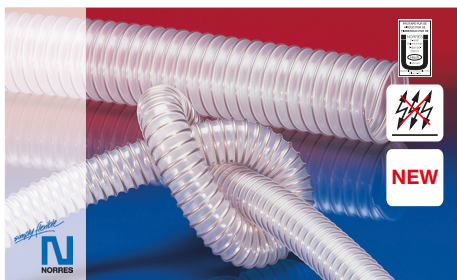


CONNECT 223



CONNECT 270-271

Overpressure and underpressure are recommended threshold operating values, products can be subjected to higher loads upon request. The bending radius is measured through the inside of the hose arch. Additional technical data at [www.norres.com](http://www.norres.com). The right to make technical modifications is reserved. All values determined at 20°C and are approx. data.



Antistatic polyurethane hose, medium-heavy, microbe resistant + flame-retardant

## Applications

- flexible hose/ ducting for abrasive powder, bulk material, granulate and for gases
- printed circuit board drilling machine (PCB)
- offset printing machine: air supply, air supply cabinet
- air supply: UV dryer, IR dryer
- extraction unit, dedusting system, filter system, oil mist extraction
- chemical industry: chemical vapours, vapour return hose at loading arm, paint steam, spray mist extraction
- explosion hazard area
- textile industry, fiber extraction: spinning machine, knitting machine, weaving loom machine
- animal stall, animal shed: barn ventilation
- clean room ventilation, semiconductor production machine
- compressor, side channel blower, vacuum pump, pressure pump, pump
- surface preparation: shot blasting/ sand blasting recovery e.g. at blasting chamber, ship yard, stripping machine, flooring preparation machine, grinding machine
- municipal vehicle: sweeper, sweeping machine

- municipal vehicle: lawn mower, slope mower, leaf blower/ leaf collector
- scrubber, floor cleaning machine
- heating hose: exterior hose as protection hose

## Properties

- medium-heavy duty
- highly abrasion resistant
- microbe resistant
- good resistance to oil, gasoline and chemicals
- very good low temperature flexibility
- flame-retardant according to: UL94-V2
- flame-retardant according to: DIN 4102-B1
- permanently antistatic wall: in accordance with ISO 8031 electrical and surface resistance  $<10^9 \Omega$  and in accordance with TRGS 727  $<2,5 * 10^9 \Omega$
- in accordance with ATEX 2014/34/EU (1999/92/EC) and German TRGS 727: pneumatic transport of flammable dusts and bulk materials (Zone 20, 21, 22 inside), aspiration of combustible dusts (Zone 22 inside), for conveying for flammable liquids (inside zone 0, 1, 2), for conveying for non-flammable liquids, for use in zone 1 and 2 (gases), for use in zone 0 (gases)

- conforms to the safety regulations of the German Wood Trade Association
- according to DIN 26057 Type 2
- conforms to RoHS guideline

## Temperature Range

- 40°C to 90°C
- short time to 125°C

## Design, Material

AIRDUC® profile hose

- spring steel wire firmly embedded in wall
- wall: permanently antistatic premium ester-polyurethane (Pre-PUR®)
- wall thickness 0,7 mm approx.

## Delivery variants

- further diameters and lengths available on request
- transparent (standard)
- special colours: full coloured
- customer-specific branding

I.D.	O.D.	Pressure DIN 26057 (50% Elongation) bar	Vacuum DIN 26057 (axially fixed) bar	Bending Radius mm	Weight kg/m	Dimensions in Stock m	Order No.
in / mm	mm						
1 / 25	32	2,445 (5,45)	0,755 (1,00)	23	0,190	5 10 15	350-0025-1002
- / 30	37	2,055 (4,57)	0,630 (1,00)	26	0,250	5 10 15	350-0030-1002
1,25 / 32	39	1,930 (4,29)	0,590 (1,00)	27	0,270	5 10 15	350-0032-1002
1,5 / 38	45	1,635 (3,64)	0,495 (1,00)	31	0,310	5 10 15	350-0038-1002
- / 40	47	1,555 (3,46)	0,470 (1,00)	32	0,330	5 10 15	350-0040-1002
1,75 / 44-45	52	1,390 (3,08)	0,420 (1,00)	35	0,370	5 10 15	350-0045-1002
2 / 50-51	57	1,250 (2,78)	0,380 (1,00)	38	0,400	5 10 15	350-0050-1002
- / 55	62	1,140 (2,53)	0,345 (0,99)	41	0,440	5 10 15	350-0055-1002
2,36 / 60	67	1,050 (2,33)	0,315 (0,83)	44	0,480	5 10 15	350-0060-1002
2,5 / 63-65	70	0,970 (2,15)	0,290 (0,71)	47	0,520	5 10 15	350-0065-1002
- / 70	77	0,900 (2,00)	0,185 (0,83)	50	0,560	5 10 15	350-0070-1002
3 / 75-76	82	0,840 (1,87)	0,175 (0,72)	53	0,590	5 10 15	350-0075-1002
- / 80	87	0,790 (1,75)	0,160 (0,64)	56	0,640	5 10 15	350-0080-1002
3,5 / 89-90	97	0,705 (1,56)	0,145 (0,51)	62	0,720	5 10 15	350-0090-1002
4 / 100-102	107	0,635 (1,41)	0,135 (0,66)	68	0,800	5 10 15	350-0100-1002
- / 110	117	0,575 (1,28)	0,125 (0,55)	74	0,870	5 10 15	350-0110-1002
4,5 / 114-115	122	0,550 (1,22)	0,120 (0,50)	77	0,900	5 10 15	350-0115-1002
4,72 / 120	127	0,530 (1,17)	0,115 (0,46)	80	0,950	5 10 15	350-0120-1002
5 / 125-127	132	0,510 (1,13)	0,110 (0,42)	83	0,980	5 10 15	350-0125-1002
- / 130	137	0,490 (1,08)	0,105 (0,39)	86	1,010	5 10 15	350-0130-1002

Overpressure and underpressure are recommended threshold operating values, products can be subjected to higher loads upon request. The bending radius is measured through the inside of the hose arch. Additional technical data at [www.norres.com](http://www.norres.com). The right to make technical modifications is reserved. All values determined at 20°C and are approx. data.





I.D.	O.D.	Pressure DIN 26057 (50% Elongation) bar	Vacuum DIN 26057 (axially fixed) bar	Bending Radius	Weight	Dimensions in Stock	Order No.
in / mm	mm			mm	kg/m	m	
5,5 / 140	147	0,455 (1,01)	0,095 (0,33)	92	1,090	5 10 15	350-0140-1002
6 / 150-152	157	0,425 (0,94)	0,075 (0,36)	98	1,400	5 10 15	350-0150-1002
6,3 / 160	167	0,400 (0,88)	0,070 (0,31)	104	1,500	5 10 15	350-0160-1002
- / 170	177	0,375 (0,83)	0,065 (0,28)	108	1,580	5 10 15	350-0170-1002
- / 175	182	0,365 (0,81)	0,065 (0,26)	113	1,630	5 10 15	350-0175-1002
7 / 178-180	187	0,355 (0,78)	0,060 (0,24)	116	1,670	5 10 15	350-0180-1002
8 / 200-203	207	0,320 (0,71)	0,055 (0,19)	128	1,860	5 10	350-0200-1002
- / 225	232	0,285 (0,63)	0,050 (0,15)	143	2,080	5 10	350-0225-1002
- / 250	257	0,255 (0,57)	0,045 (0,12)	158	2,310	5 10	350-0250-1002
10 / 254	261	0,250 (0,56)	0,045 (0,11)	160	2,350	5 10	350-0254-1002
- / 275	282	0,230 (0,51)	0,040 (0,09)	173	2,540	5 10	350-0275-1002
11 / 280	287	0,230 (0,51)	0,040 (0,09)	176	2,590	5 10	350-0280-1002
- / 300	307	0,215 (0,47)	0,035 (0,08)	188	2,770	5 10	350-0300-1002
12 / 305	312	0,210 (0,46)	0,035 (0,07)	191	2,810	5 10	350-0305-1002
- / 315	322	0,205 (0,45)	0,035 (0,07)	197	2,900	5 10	350-0315-1002
- / 350	357	0,185 (0,40)	0,030 (0,05)	218	3,220	5 10	350-0350-1002
14 / 356	363	0,180 (0,40)	0,030 (0,06)	222	3,340	5 10	350-0356-1002
- / 400	407	0,160 (0,35)	0,030 (0,05)	248	4,170	5 10	350-0400-1002
- / 450	457	0,140 (0,32)	0,025 (0,04)	281	4,690	5 10	350-0450-1002
- / 500	507	0,130 (0,28)	0,025 (0,03)	313	5,200	5 10	350-0500-1002

Overpressure and underpressure are recommended threshold operating values, products can be subjected to higher loads upon request. The bending radius is measured through the inside of the hose arch. The right to make technical modifications is reserved. All values determined at 20°C and are approx. data. Additional technical data at [www.norres.com/en/technology/](http://www.norres.com/en/technology/)

Accessories

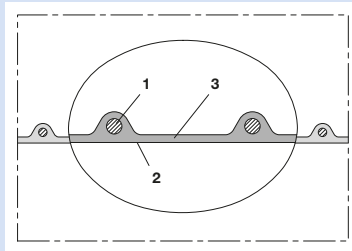
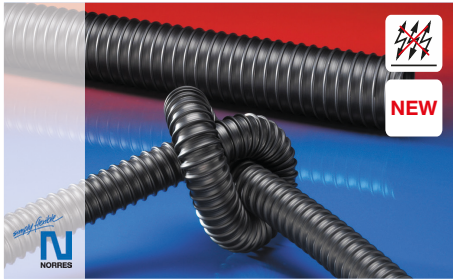


Overpressure and underpressure are recommended threshold operating values, products can be subjected to higher loads upon request. The bending radius is measured through the inside of the hose arch. Additional technical data at [www.norres.com](http://www.norres.com). The right to make technical modifications is reserved. All values determined at 20°C and are approx. data.



CONNECT 270-271

Overpressure and underpressure are recommended threshold operating values, products can be subjected to higher loads upon request. The bending radius is measured through the inside of the hose arch. Additional technical data at [www.norres.com](http://www.norres.com). The right to make technical modifications is reserved. All values determined at 20°C and are approx. data.



Antistatic polyurethane hose, medium-heavy, black

## Applications

- flexible hose/ ducting for abrasive powder, bulk material, granulate and for gases
- air supply: UV dryer, IR dryer
- extraction unit, dedusting system, filter system, oil mist extraction
- explosion hazard area
- textile industry, fiber extraction: spinning machine, knitting machine, weaving loom machine
- animal stall, animal shed: barn ventilation
- clean room ventilation, semiconductor production machine
- surface preparation: shot blasting/ sand blasting recovery e.g. at blasting chamber, ship yard, stripping machine, flooring preparation machine, grinding machine
- heating hose: exterior hose as protection hose

## Properties

- medium-heavy duty
- highly abrasion resistant
- good resistance to oil, gasoline and chemicals
- very good low temperature flexibility
- permanently antistatic wall: in accordance with ISO 8031 electrical and surface resistance  $<10^9 \Omega$  and in accordance with TRGS 727  $<2,5 \cdot 10^6 \Omega$
- in accordance with ATEX 2014/34/EU (1999/92/EC) and German TRGS 727: pneumatic transport of flammable dusts and bulk materials (Zone 20, 21, 22 inside), aspiration of combustible dusts (Zone 22 inside), for conveying for flammable liquids (inside zone 0, 1, 2), for conveying for non-flammable liquids, for use in zone 1 and 2 (gases), for use in zone 0 (gases)
- according to DIN 26057 Type 2
- conforms to RoHS guideline

## Temperature Range

- 40°C to 90°C
- short time to 125°C

## Design, Material

AIRDUC® profile hose

- spring steel wire firmly embedded in wall
- wall: permanently antistatic premium ester-polyurethane (Pre-PUR®)
- wall thickness 0,7 mm approx.

## Delivery variants

- further diameters and lengths available on request
- black (standard)
- special colours: full coloured
- customer-specific branding

I.D.	O.D.	Pressure DIN 26057 (50% Elongation) bar	Vacuum DIN 26057 (axially fixed) bar	Bending Radius mm	Weight kg/m	Dimensions in Stock m	Order No.
in / mm	mm						
- / 40	47	1,555 (3,46)	0,470 (1,00)	32	0,330	10	350-0040-3030
2 / 50-51	57	1,250 (2,78)	0,380 (1,00)	38	0,400	10	350-0050-3030
2,36 / 60	67	1,050 (2,33)	0,315 (0,83)	44	0,480	10	350-0060-3030
- / 70	77	0,900 (2,00)	0,185 (0,83)	50	0,560	10	350-0070-3030
3 / 75-76	82	0,840 (1,87)	0,175 (0,72)	53	0,590	10	350-0075-3030
- / 80	87	0,790 (1,75)	0,160 (0,64)	56	0,640	10	350-0080-3030
4 / 100-102	107	0,635 (1,41)	0,135 (0,66)	68	0,800	10	350-0100-3030
4,72 / 120	127	0,530 (1,17)	0,115 (0,46)	80	0,950	10	350-0120-3030
5 / 125-127	132	0,510 (1,13)	0,110 (0,42)	83	0,980	10	350-0125-3030
5,5 / 140	147	0,455 (1,01)	0,095 (0,33)	92	1,090	10	350-0140-3030
6 / 150-152	157	0,425 (0,94)	0,075 (0,36)	98	1,400	10	350-0150-3030
6,3 / 160	167	0,400 (0,88)	0,070 (0,31)	104	1,500	10	350-0160-3030
8 / 200-203	207	0,320 (0,71)	0,055 (0,19)	128	1,860	10	350-0200-3030
- / 250	257	0,255 (0,57)	0,045 (0,12)	158	2,310	10	350-0250-3030
- / 300	307	0,215 (0,47)	0,035 (0,08)	188	2,770	10	350-0300-3030

Overpressure and underpressure are recommended threshold operating values, products can be subjected to higher loads upon request. The bending radius is measured through the inside of the hose arch. The right to make technical modifications is reserved. All values determined at 20°C and are approx. data. Additional technical data at [www.norres.com/en/technology/](http://www.norres.com/en/technology/)

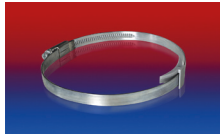
Overpressure and underpressure are recommended threshold operating values, products can be subjected to higher loads upon request. The bending radius is measured through the inside of the hose arch. Additional technical data at [www.norres.com](http://www.norres.com). The right to make technical modifications is reserved. All values determined at 20°C and are approx. data.



Accessories



CLAMP 212



CLAMP 210 BRIDGE CLAMP



CLAMP 217



CLAMP 213



CONNECT 228



CONNECT MOULD ASSEMBLY 233



CONNECT THREAD FITTING 234



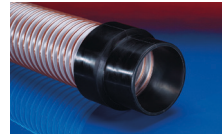
CONNECT TRI-CLAMP FITTING 245



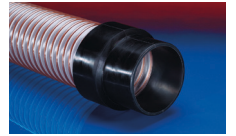
CONNECT DAIRY FITTING 247



CONNECT ASEPTIC FITTING 249



CONNECT 240 + 241



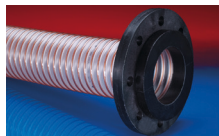
CONNECT 240 EC



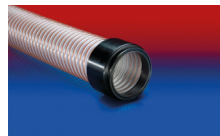
CONNECT 242



CONNECT 243



CONNECT 244



CONNECT 245



CONNECT 246

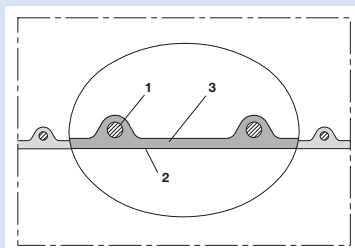
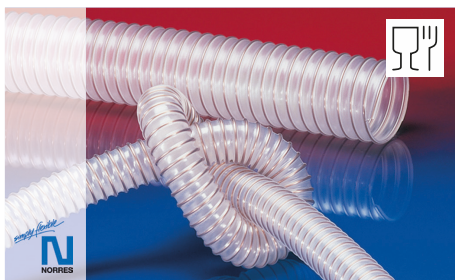


CONNECT 223



CONNECT 270-271

Overpressure and underpressure are recommended threshold operating values, products can be subjected to higher loads upon request. The bending radius is measured through the inside of the hose arch. Additional technical data at [www.norres.com](http://www.norres.com). The right to make technical modifications is reserved. All values determined at 20°C and are approx. data.



Food hose and pharmaceutical hose, medium-heavy and reinforced

## Applications

- flexible hose/ ducting for abrasive powder, bulk material, granulate and for gases
- food industry, pharmaceutical industry: foodstuff, pharmaceutical
- conveying of dry foods e.g. rice, cereals, sugar, milk powder, powders, coffee, tea, grains, flour, frozen foods
- vacuum conveying equipment, vacuum hopper, suction conveyor, dosing system
- mixer, dryer, packaging machine, bulk-bag (big bag)-charging and discharging, mill
- industrial vacuum cleaners, vacuum cleaners

## Properties

- medium-heavy duty
- highly abrasion resistant

- Approved by an independent testing laboratory for the complete hose acc. to EU-Directive 10/2011 and EC 1935/2004 and the latest EU-Directive 2015/174, food grade polyurethane, complies with: FDA 21 CFR 177.2600 and 178.2010
- Approval acc. to EU-Directive 10/2011 (food simulants A, B, C or E and D2) and EC 1935/2004
- odourless and tasteless
- microbe and hydrolysis resistant
- good resistance to oil, gasoline and chemicals
- very good low temperature flexibility
- flame-retardant according to: UL94-HB
- manufacturing process acc. GMP EC 2023/2006
- conforms to RoHS guideline

## Temperature Range

- 40°C to 90°C

- short time to 125°C

## Design, Material

AIRDUC® profile hose

- spring steel wire firmly embedded in wall
- wall: special premium ether-polyurethane (Pre-PUR®)
- wall thickness 1,0 mm approx.

## Delivery variants

- further diameters and lengths available on request
- transparent (standard)
- customer-specific branding

I.D.	O.D.	Pressure DIN 26057 (50% Elongation) bar	Vacuum DIN 26057 (axially fixed) bar	Bending Radius mm	Weight kg/m	Dimensions in Stock m	Order No.
in / mm	mm						
1 / 25	32	2,715 (5,85)	0,680 (1,00)	23	0,200	5 10 15 20	351-0025-0000
- / 30	38	2,290 (4,92)	0,470 (1,00)	27	0,260	5 10 15	351-0030-0000
1,25 / 32	40	2,155 (4,63)	0,440 (1,00)	28	0,280	5 10 15 20	351-0032-0000
1,36 / 35	43	1,975 (4,25)	0,405 (1,00)	30	0,300	5 10 15	351-0035-0000
1,5 / 38	46	1,830 (3,93)	0,370 (1,00)	32	0,320	5 10 15 20	351-0038-0000
- / 40	48	1,740 (3,74)	0,355 (1,00)	33	0,340	5 10 15 20	351-0040-0000
1,75 / 44-45	53	1,555 (3,33)	0,315 (1,00)	36	0,380	5 10 15	351-0045-0000
2 / 50-51	58	1,405 (3,01)	0,285 (1,00)	39	0,410	5 10 15 20	351-0050-0000
- / 55	63	1,280 (2,74)	0,255 (0,98)	42	0,450	5 10 15 20	351-0055-0000
2,36 / 60	68	1,175 (2,52)	0,235 (0,82)	45	0,490	5 10 15 20	351-0060-0000
2,5 / 63-65	73	1,090 (2,33)	0,220 (0,70)	48	0,530	5 10 15	351-0065-0000
- / 70	79	1,010 (2,17)	0,150 (0,84)	52	0,590	5 10 15	351-0070-0000
3 / 75-76	84	0,945 (2,03)	0,140 (0,73)	55	0,640	5 10 15 20	351-0075-0000
- / 80	89	0,890 (1,90)	0,130 (0,64)	58	0,680	5 10 15	351-0080-0000
3,5 / 89-90	99	0,790 (1,69)	0,115 (0,51)	64	0,750	5 10 15	351-0090-0000
4 / 100-102	109	0,715 (1,53)	0,110 (0,66)	70	0,970	5 10 15 20	351-0100-0000
- / 110	119	0,650 (1,39)	0,100 (0,54)	76	1,060	5 10 15	351-0110-0000
4,5 / 114-115	124	0,620 (1,33)	0,095 (0,50)	79	1,110	5 10 15	351-0115-0000
4,72 / 120	129	0,595 (1,28)	0,090 (0,45)	82	1,160	5 10 15	351-0120-0000
5 / 125-127	134	0,575 (1,23)	0,090 (0,42)	85	1,200	5 10 15	351-0125-0000
- / 130	139	0,550 (1,18)	0,085 (0,39)	88	1,250	5 10 15	351-0130-0000
5,5 / 140	149	0,510 (1,10)	0,080 (0,33)	94	1,340	5 10 15	351-0140-0000
6 / 150-152	159	0,480 (1,02)	0,065 (0,36)	100	1,520	5 10 15	351-0150-0000
6,3 / 160	169	0,450 (0,96)	0,065 (0,32)	106	1,610	5 10 15	351-0160-0000
- / 170	179	0,425 (0,90)	0,060 (0,28)	110	1,710	5 10 15	351-0170-0000
- / 175	184	0,410 (0,88)	0,060 (0,26)	115	1,760	5 10 15	351-0175-0000

Overpressure and underpressure are recommended threshold operating values, products can be subjected to higher loads upon request. The bending radius is measured through the inside of the hose arch. Additional technical data at [www.norres.com](http://www.norres.com). The right to make technical modifications is reserved. All values determined at 20°C and are approx. data.



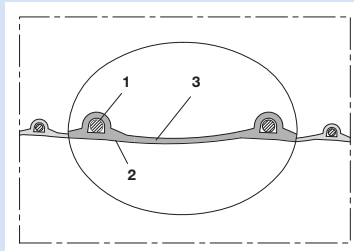
I.D. in / mm	O.D. mm	Pressure DIN 26057 (50% Elongation) bar	Vacuum DIN 26057 (axially fixed) bar	Bending Radius mm	Weight kg/m	Dimensions in Stock m	Order No.
7 / 178-180	189	0,400 (0,85)	0,055 (0,24)	118	1,810	5 10 15	351-0180-0000
8 / 200-203	209	0,360 (0,77)	0,050 (0,19)	130	2,000	5 10 15	351-0200-0000
- / 225	234	0,320 (0,68)	0,040 (0,14)	145	2,160	5 10	351-0225-0000
- / 250	259	0,290 (0,62)	0,035 (0,11)	160	2,390	5 10 15	351-0250-0000
- / 275	284	0,260 (0,56)	0,035 (0,09)	175	2,630	5 10	351-0275-0000
11 / 280	289	0,260 (0,55)	0,030 (0,08)	178	2,670	5 10	351-0280-0000
- / 300	309	0,240 (0,51)	0,030 (0,07)	190	2,860	5 10	351-0300-0000
- / 315	324	0,230 (0,49)	0,030 (0,06)	199	3,000	5 10	351-0315-0000
- / 325	334	0,220 (0,47)	0,030 (0,06)	205	3,100	5 10	351-0325-0000
- / 350	359	0,205 (0,44)	0,025 (0,05)	220	3,330	5 10	351-0350-0000
- / 375	384	0,195 (0,41)	0,025 (0,05)	237	3,900	5 10	351-0375-0000
- / 400	409	0,180 (0,39)	0,025 (0,04)	250	4,270	5 10	351-0400-0000
- / 450	459	0,160 (0,34)	0,020 (0,03)	283	4,800	5 10	351-0450-0000
- / 500	509	0,145 (0,31)	0,020 (0,03)	315	5,330	5 10	351-0500-0000

Overpressure and underpressure are recommended threshold operating values, products can be subjected to higher loads upon request. The bending radius is measured through the inside of the hose arch. The right to make technical modifications is reserved. All values determined at 20°C and are approx. data. Additional technical data at [www.norres.com/en/technology/](http://www.norres.com/en/technology/)

### Accessories



Overpressure and underpressure are recommended threshold operating values, products can be subjected to higher loads upon request. The bending radius is measured through the inside of the hose arch. Additional technical data at [www.norres.com](http://www.norres.com). The right to make technical modifications is reserved. All values determined at 20°C and are approx. data.



PVC hose, light

**Applications**

- flexible hose/ ducting for gases and for dust, powder, fibres
- extraction unit, dedusting system, filter system, oil mist extraction
- galvanic extraction
- chemical industry: chemical vapours, vapour return hose at loading arm, paint steam, spray mist extraction
- X-ray machine: cable protection conduit (special type on request)
- heating hose: exterior hose as protection hose

**Properties**

- light weight

- highly flexible + compressible 3:1
- good resistance to alkalis and acids
- good resistance to chemicals
- phthalate-free
- flame-retardant according to: UL94-HB
- conforms to RoHS guideline

**Temperature Range**

- 20°C to 70°C
- short time to 80°C

**Design, Material**

- patented PROTAPE® tape hose
- spring steel wire integrated in wall
  - wall: high grade soft PVC

3. wall thickness 0,6 mm approx.

**Delivery variants**

- further diameters and lengths available on request
- grey (standard)
- special colours: transparent, full coloured
- customer-specific branding
- ID >= 2"/50-51 mm compressed packed in poly bag (low transportation cost / risk, minimum storage size), ID < 2"/50-51 mm not compressed, wrapped in a coil

I.D.	O.D.	Over-pressure	Under-pressure	Bending Radius	Weight	Dimensions in Stock	Order No.
in / mm	mm	bar	bar	mm	kg/m	m	
- / 30	37	0,930	0,200	22	0,240	5 10 15	310-0030-0000
1,25 / 32	39	0,875	0,200	23	0,260	5 10 15	310-0032-0000
1,5 / 38	45	0,740	0,185	26	0,300	5 10 15	310-0038-0000
- / 40	47	0,705	0,180	27	0,320	5 10 15	310-0040-0000
2 / 50-51	58	0,410	0,155	33	0,310	5 10 15	310-0050-0000
- / 55	63	0,370	0,140	36	0,330	5 10 15	310-0055-0000
2,36 / 60	68	0,340	0,120	38	0,360	5 10 15	310-0060-0000
2,5 / 63-65	73	0,315	0,105	41	0,390	5 10 15	310-0065-0000
- / 70	78	0,295	0,090	43	0,420	5 10 15	310-0070-0000
3 / 75-76	83	0,275	0,085	46	0,450	5 10 15	310-0075-0000
- / 80	88	0,255	0,075	48	0,470	5 10 15	310-0080-0000
3,5 / 89-90	98	0,230	0,065	53	0,530	5 10 15	310-0090-0000
4 / 100-102	108	0,205	0,050	58	0,570	5 10 15	310-0100-0000
- / 110	118	0,185	0,045	63	0,620	5 10 15	310-0110-0000
4,5 / 114-115	123	0,180	0,045	66	0,650	5 10 15	310-0115-0000
4,72 / 120	128	0,170	0,045	68	0,680	5 10 15	310-0120-0000
5 / 125-127	133	0,165	0,035	71	0,710	5 10 15	310-0125-0000
- / 130	138	0,160	0,035	73	0,730	5 10 15	310-0130-0000
5,5 / 140	148	0,145	0,035	78	0,790	5 10 15	310-0140-0000
6 / 150-152	158	0,135	0,035	83	0,840	5 10 15	310-0150-0000
6,3 / 160	168	0,130	0,030	88	0,870	5 10 15	310-0160-0000
7 / 178-180	188	0,115	0,025	98	1,000	5 10 15	310-0180-0000
8 / 200-203	208	0,105	0,025	108	1,110	5 10	310-0200-0000
- / 225	233	0,090	0,015	121	1,250	5 10	310-0225-0000
- / 250	258	0,085	0,010	133	1,390	5 10	310-0250-0000
- / 300	309	0,070	0,010	159	1,950	5 10	310-0300-0000

Overpressure and underpressure are recommended threshold operating values, products can be subjected to higher loads upon request. The bending radius is measured through the inside of the hose arch. Additional technical data at [www.norres.com](http://www.norres.com). The right to make technical modifications is reserved. All values determined at 20°C and are approx. data.

Overpressure and underpressure are recommended threshold operating values, products can be subjected to higher loads upon request. The bending radius is measured through the inside of the hose arch. The right to make technical modifications is reserved. All values determined at 20°C and are approx. data. Additional technical data at [www.norres.com/en/technology/](http://www.norres.com/en/technology/)

Accessories



CLAMP 212



CLAMP 210 BRIDGE  
CLAMP



CLAMP 217



CLAMP 213



CONNECT 228



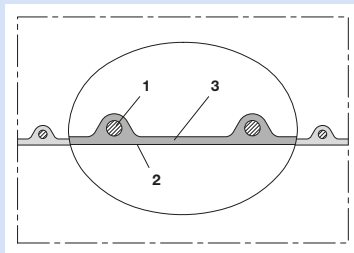
CONNECT 223



CONNECT 270-271

Overpressure and underpressure are recommended threshold operating values, products can be subjected to higher loads upon request. The bending radius is measured through the inside of the hose arch. Additional technical data at [www.norres.com](http://www.norres.com). The right to make technical modifications is reserved. All values determined at 20°C and are approx. data.





PVC hose, medium-heavy

**Applications**

- flexible hose/ ducting for gases and for dust, powder, fibres
- extraction unit, dedusting system, filter system, oil mist extraction
- galvanic extraction
- chemical industry: chemical vapours, vapour return hose at loading arm, paint steam, spray mist extraction
- heating hose: exterior hose as protection hose

**Properties**

- medium-heavy duty

- good resistance to alkalis and acids
- good resistance to chemicals
- phthalate-free
- flame-retardant according to: UL94-HB
- conforms to RoHS guideline

**Temperature Range**

- -20°C to 70°C
- short time to 80°C

**Design, Material**

AIRDUC® profile hose

1. spring steel wire firmly embedded in wall

2. wall: high grade soft PVC
3. wall thickness 0,9 mm approx.

**Delivery variants**

- further diameters and lengths available on request
- grey (standard)
- special colours: transparent, full coloured
- customer-specific branding

I.D.	O.D.	Over-pressure	Under-pressure	Bending Radius	Weight	Dimensions in Stock	Order No.
in / mm	mm	bar	bar	mm	kg/m	m	
- / 20	27	1,385	0,500	17	0,190	10 15	341-0020-0000
1 / 25	32	1,125	0,400	20	0,230	10 15	341-0025-0000
- / 30	38	0,945	0,275	23	0,250	10 15	341-0030-0000
1,25 / 32	40	0,890	0,260	24	0,270	10 15	341-0032-0000
1,36 / 35	43	0,815	0,235	26	0,300	10 15	341-0035-0000
1,5 / 38	46	0,755	0,220	27	0,320	10 15	341-0038-0000
- / 40	48	0,715	0,205	28	0,330	10 15	341-0040-0000
- / 42	50	0,675	0,200	29	0,350	10 15	341-0042-0000
1,75 / 44-45	53	0,640	0,185	31	0,370	10 15	341-0045-0000
2 / 50-51	58	0,575	0,165	33	0,410	10 15	341-0050-0000
- / 55	63	0,525	0,150	36	0,450	10 15	341-0055-0000
2,36 / 60	68	0,485	0,140	38	0,490	10 15	341-0060-0000
2,5 / 63-65	73	0,445	0,125	41	0,520	10 15	341-0065-0000
- / 70	79	0,415	0,120	44	0,540	10 15	341-0070-0000
3 / 75-76	84	0,390	0,110	47	0,580	10 15	341-0075-0000
- / 80	89	0,365	0,105	49	0,610	10 15	341-0080-0000
3,5 / 89-90	99	0,325	0,090	54	0,700	10 15	341-0090-0000
4 / 100-102	109	0,295	0,060	59	0,850	10 15 20	341-0100-0000
- / 105	114	0,280	0,060	62	0,890	10 15	341-0105-0000
- / 110	119	0,265	0,055	64	0,940	10 15	341-0110-0000
4,5 / 114-115	124	0,255	0,050	67	0,980	10 15	341-0115-0000
4,72 / 120	129	0,245	0,050	69	1,020	10 15	341-0120-0000
5 / 125-127	134	0,235	0,045	72	1,060	10 15	341-0125-0000
- / 130	139	0,225	0,045	74	1,100	10 15	341-0130-0000
5,5 / 140	149	0,210	0,040	79	1,180	10 15	341-0140-0000
6 / 150-152	159	0,195	0,040	84	1,260	10 15	341-0150-0000
6,3 / 160	169	0,185	0,035	89	1,350	10 15	341-0160-0000
7 / 178-180	189	0,165	0,030	99	1,510	10 15	341-0180-0000
8 / 200-203	209	0,145	0,030	109	1,670	10 15	341-0200-0000
- / 225	234	0,130	0,025	122	2,260	10	341-0225-0000

Overpressure and underpressure are recommended threshold operating values, products can be subjected to higher loads upon request. The bending radius is measured through the inside of the hose arch. Additional technical data at [www.norres.com](http://www.norres.com). The right to make technical modifications is reserved. All values determined at 20°C and are approx. data.



I.D.	O.D.	Over- pressure	Under- pressure	Bending Radius	Weight	Dimensions in Stock	Order No.
in / mm	mm	bar	bar	mm	kg/m	m	
- / 250	259	0,120	0,020	134	2,510	10	341-0250-0000
11 / 280	289	0,105	0,020	149	2,800	10	341-0280-0000
- / 300	309	0,100	0,020	159	3,000	10	341-0300-0000
- / 350	359	0,100	0,015	184	3,500	10	341-0350-0000

Overpressure and underpressure are recommended threshold operating values, products can be subjected to higher loads upon request. The bending radius is measured through the inside of the hose arch. The right to make technical modifications is reserved. All values determined at 20°C and are approx. data. Additional technical data at [www.norres.com/en/technology/](http://www.norres.com/en/technology/)

## Accessories



CLAMP 212



CLAMP 210 BRIDGE  
CLAMP



CLAMP 212 EC



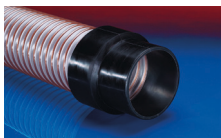
CLAMP 217



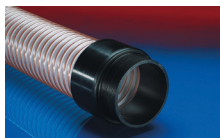
CLAMP 213



CONNECT 228



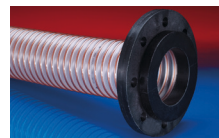
CONNECT 240 + 241



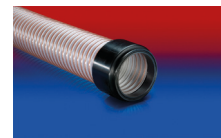
CONNECT 242



CONNECT 243



CONNECT 244



CONNECT 245



CONNECT 246

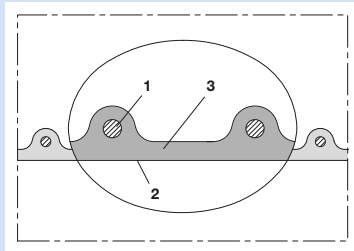
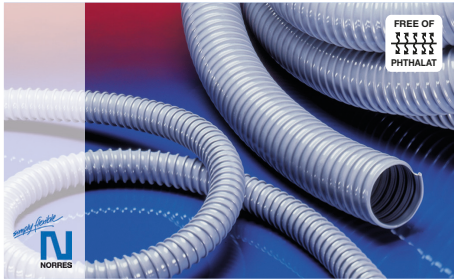


CONNECT 223



CONNECT 270-271

Overpressure and underpressure are recommended threshold operating values, products can be subjected to higher loads upon request. The bending radius is measured through the inside of the hose arch. Additional technical data at [www.norres.com](http://www.norres.com). The right to make technical modifications is reserved. All values determined at 20°C and are approx. data.



PVC hose, heavy

**Applications**

- flexible hose/ ducting for gases and for dust, powder, fibres
- extraction unit, dedusting system, filter system, oil mist extraction
- galvanic extraction

**Properties**

- heavy duty
- increased pressure and vacuum resistance
- good resistance to alkalis and acids
- good resistance to chemicals

- phthalate-free
- flame-retardant according to: UL94-HB
- conforms to RoHS guideline

**Temperature Range**

- 20°C to 70°C
- short time to 80°C

**Design, Material**

- AIRDUC® profile hose
- 1. spring steel wire firmly embedded in wall
- 2. wall: high grade soft PVC

3. wall thickness 1,4 - 1,5 mm approx.

**Delivery variants**

- further diameters and lengths available on request
- grey (standard)
- special colours: transparent, full coloured
- customer-specific branding

I.D.	O.D.	Over-pressure	Under-pressure	Bending Radius	Weight	Dimensions in Stock	Order No.
in / mm	mm	bar	bar	mm	kg/m	m	
- / 20	28	2,665	1,000	18	0,280	10 15	345-0020-0000
1 / 25	33	2,330	1,000	21	0,330	10 15	345-0025-0000
- / 30	40	1,970	0,970	25	0,450	10 15	345-0030-0000
1,25 / 32	42	1,860	0,910	26	0,470	10 15	345-0032-0000
1,36 / 35	45	1,710	0,830	28	0,510	10 15	345-0035-0000
1,5 / 38	48	1,585	0,765	29	0,550	10 15	345-0038-0000
- / 40	50	1,510	0,725	30	0,570	10 15	345-0040-0000
- / 42	52	1,365	0,860	31	0,600	10 15	345-0042-0000
2 / 50-51	60	1,220	0,580	35	0,700	10 15	345-0050-0000
2,36 / 60	70	1,025	0,485	40	0,830	10 15	345-0060-0000
2,5 / 63-65	75	0,950	0,450	43	0,890	10 15	345-0065-0000
- / 70	82	0,885	0,380	63	1,060	10 15	345-0070-0000
3 / 75-76	87	0,830	0,330	67	1,130	10 15	345-0075-0000
- / 80	92	0,780	0,310	70	1,200	10 15	345-0080-0000
- / 85	97	0,735	0,440	74	1,270	10 15	345-0085-0000
3,5 / 89-90	102	0,695	0,275	77	1,340	10 15	345-0090-0000
4 / 100-102	112	0,625	0,255	84	1,480	10 15	345-0100-0000
- / 105	117	0,600	0,320	88	1,550	10 15	345-0105-0000
- / 110	122	0,570	0,230	91	1,620	10 15	345-0110-0000
4,5 / 114-115	127	0,545	0,220	95	1,680	10 15	345-0115-0000
4,72 / 120	132	0,525	0,210	98	1,750	10 15	345-0120-0000
5 / 125-127	137	0,505	0,205	102	1,820	10 15	345-0125-0000
- / 130	142	0,485	0,195	105	1,890	10 15	345-0130-0000
5,5 / 140	152	0,450	0,180	112	2,030	10 15	345-0140-0000
6 / 150-152	162	0,420	0,170	119	2,330	10 15	345-0150-0000
6,3 / 160	172	0,395	0,160	126	2,480	10 15	345-0160-0000
7 / 178-180	192	0,350	0,140	140	2,780	10 15	345-0180-0000
8 / 200-203	213	0,315	0,100	156	3,140	10	345-0200-0000
- / 225	238	0,280	0,095	174	3,520	10	345-0225-0000
- / 250	263	0,255	0,085	191	3,900	10	345-0250-0000
11 / 280	293	0,225	0,080	212	4,350	10	345-0280-0000

Overpressure and underpressure are recommended threshold operating values, products can be subjected to higher loads upon request. The bending radius is measured through the inside of the hose arch. Additional technical data at [www.norres.com](http://www.norres.com). The right to make technical modifications is reserved. All values determined at 20°C and are approx. data.



I.D.	O.D.	Over- pressure	Under- pressure	Bending Radius	Weight	Dimensions in Stock	Order No.
in / mm	mm	bar	bar	mm	kg/m	m	
- / 300	313	0,210	0,075	226	4,660	10	345-0300-0000
- / 325	338	0,195	0,065	244	5,470	10	345-0325-0000
- / 350	363	0,180	0,060	261	5,880	10	345-0350-0000

Overpressure and underpressure are recommended threshold operating values, products can be subjected to higher loads upon request. The bending radius is measured through the inside of the hose arch. The right to make technical modifications is reserved. All values determined at 20°C and are approx. data. Additional technical data at [www.norres.com/en/technology/](http://www.norres.com/en/technology/)

## Accessories



CLAMP 212



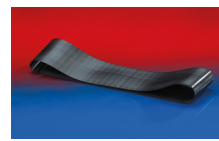
CLAMP 212 EC



CLAMP 217



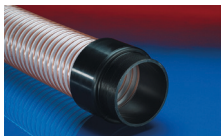
CLAMP 213



CONNECT 228



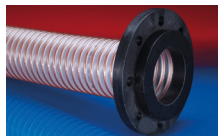
CONNECT 240 + 241



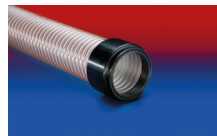
CONNECT 242



CONNECT 243



CONNECT 244



CONNECT 245



CONNECT 246

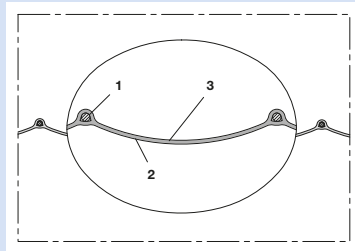


CONNECT 223



CONNECT 270-271

Overpressure and underpressure are recommended threshold operating values, products can be subjected to higher loads upon request. The bending radius is measured through the inside of the hose arch. Additional technical data at [www.norres.com](http://www.norres.com). The right to make technical modifications is reserved. All values determined at 20°C and are approx. data.



Polyurethane ducting, (to +125°C)

**Applications**

- flexible hose/ ducting for gases and for abrasive dust, powder, fibres
- air supply: UV dryer, IR dryer
- welding fume extraction
- extraction arm
- construction industry: tunnel ventilation
- tent heating, airport gangway heating, heaters for construction sites

**Properties**

- fabric reinforced
- super-light weight

- highly flexible + compressible 4:1
- abrasion-resistant
- good resistance to oil, gasoline and chemicals
- flame-retardant wall according to: NF P 92-503 M1
- conforms to RoHS guideline

**Temperature Range**

- 40°C to 125°C

**Design, Material**

PROTAPE® tape hose

- spring steel wire integrated in wall

- fabric-reinforced tape; wall: polyurethane coated fabric
- wall thickness 0,25 mm approx.

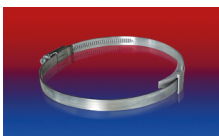
**Delivery variants**

- further diameters and lengths available on request
- dark-grey (standard)
- customer-specific branding
- compressed packed in poly bag (low transportation cost / risk, minimum storage size)

I.D.	O.D.	Over-pressure	Under-pressure	Bending Radius	Weight	Dimensions in Stock	Order No.
in / mm	mm	bar	bar	mm	kg/m	m	
2 / 50-51	59	0,905	0,335	34	0,840	7,5 15	370-0051-0000
2,36 / 60	68	0,755	0,285	38	0,810	7,5 15	370-0060-0000
2,5 / 63-65	73	0,700	0,265	38	0,800	7,5 15	370-0065-0000
3 / 75-76	84	0,680	0,23	38	0,774	7,5 15	370-0076-0000
- / 80	88	0,570	0,215	32	0,780	7,5 15	370-0080-0000
3,5 / 89-90	98	0,505	0,19	38	0,800	7,5 15	370-0090-0000
4 / 100-102	110	0,455	0,14	41	0,804	7,5 15	370-0102-0000
- / 110	120	0,415	0,12	33	0,810	7,5 15	370-0110-0000
5 / 125-127	138	0,365	0,105	32	0,925	7,5 15	370-0127-0000
5,5 / 140	151	0,325	0,095	35	1,040	7,5 15	370-0140-0000
6 / 150-152	163	0,305	0,085	32	1,070	7,5 15	370-0152-0000
6,5 / 165	176	0,275	0,08	50	1,274	7,5 15	370-0165-0000
7 / 178-180	196	0,255	0,075	58	1,478	7,5 15	370-0180-0000
8 / 200-203	216	0,230	0,055	69	1,750	7,5 15	370-0203-0000
10 / 254	268	0,180	0,045	59	1,990	7,5 15	370-0254-0000

Overpressure and underpressure are recommended threshold operating values, products can be subjected to higher loads upon request. The bending radius is measured through the inside of the hose arch. The right to make technical modifications is reserved. All values determined at 20°C and are approx. data. Additional technical data at [www.norres.com/en/technology/](http://www.norres.com/en/technology/)

**Accessories**



CLAMP 210 BRIDGE CLAMP



CLAMP 208



CONNECT 228

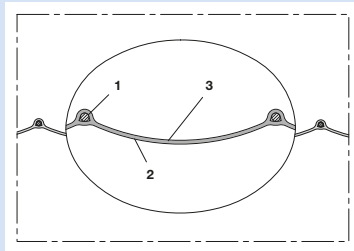


CONNECT 223



CONNECT 270-271

Overpressure and underpressure are recommended threshold operating values, products can be subjected to higher loads upon request. The bending radius is measured through the inside of the hose arch. Additional technical data at [www.norres.com](http://www.norres.com). The right to make technical modifications is reserved. All values determined at 20°C and are approx. data.



PVC ducting, (to +120°C)

**Applications**

- flexible hose/ ducting for gases
- welding fume extraction
- extraction arm
- construction industry: tunnel ventilation
- tent heating, airport gangway heating, heaters for construction sites
- heating system/ heater: fresh air supply

**Properties**

- fabric reinforced
- super-light weight
- highly flexible + compressible 6:1
- very good heat resistance

- good resistance to alkalis and acids
- good resistance to chemicals
- flame-retardant wall according to: NF P 92-503 M1
- conforms to RoHS guideline

**Temperature Range**

- 10°C to 110°C
- short time to 120°C

**Design, Material**

- PROTAPE® tape hose
- spring steel wire integrated in wall
  - fabric-reinforced tape; Wall: PVC coated glass

fabric  
3. wall thickness 0,25 mm approx.

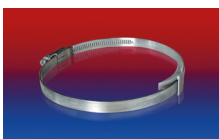
**Delivery variants**

- further diameters and lengths available on request
- grey (standard)
- customer-specific branding
- compressed packed in poly bag (low transportation cost / risk, minimum storage size)

I.D.	O.D.	Over-pressure	Under-pressure	Bending Radius	Weight	Dimensions in Stock	Order No.
in / mm	mm	bar	bar	mm	kg/m	m	
2 / 50-51	54	0,240	0,145	29	0,120	7,5 15	371-0051-1015
3 / 75-76	79	0,160	0,080	41	0,180	7,5 15	371-0076-1015
- / 80	83	0,150	0,080	43	0,190	7,5 15	371-0080-1015
3,5 / 89-90	93	0,135	0,070	48	0,200	7,5 15	371-0090-1015
4 / 100-102	105	0,120	0,050	54	0,240	7,5 15	371-0102-1015
- / 110	113	0,110	0,045	58	0,270	7,5 15	371-0110-1015
5 / 125-127	130	0,095	0,035	67	0,320	7,5 15	371-0127-1015
5,5 / 140	143	0,085	0,035	73	0,350	7,5 15	371-0140-1015
6 / 150-152	155	0,080	0,035	79	0,370	7,5 15	371-0152-1015
6,3 / 160	163	0,075	0,020	83	0,440	7,5 15	371-0160-1015
7 / 178-180	183	0,065	0,020	93	0,540	7,5 15	371-0180-1015
8 / 200-203	206	0,600	0,020	105	0,600	7,5 15	371-0203-1015
10 / 254	258	0,045	0,015	131	0,790	7,5 15	371-0254-1015
12 / 305	309	0,040	0,010	157	0,950	7,5 15	371-0305-1015

Overpressure and underpressure are recommended threshold operating values, products can be subjected to higher loads upon request. The bending radius is measured through the inside of the hose arch. The right to make technical modifications is reserved. All values determined at 20°C and are approx. data. Additional technical data at [www.norres.com/en/technology/](http://www.norres.com/en/technology/)

**Accessories**



CLAMP 210 BRIDGE CLAMP



CLAMP 208



CONNECT 228

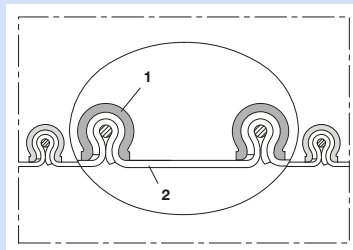


CONNECT 223



CONNECT 270-271

Overpressure and underpressure are recommended threshold operating values, products can be subjected to higher loads upon request. The bending radius is measured through the inside of the hose arch. Additional technical data at [www.norres.com](http://www.norres.com). The right to make technical modifications is reserved. All values determined at 20°C and are approx. data.



PVC clamp profile hose (clip hose), (to +110°C)

**Applications**

- flexible hose/ ducting for gases and for dust, powder, fibres
- welding fume extraction
- extraction arm

**Properties**

- fabric reinforced
- abrasion protection via external clamp profile
- secure clamping of the wall within the clamp profile
- highly flexible + compressible
- good resistance to alkalis and acids

- good resistance to chemicals
- flame-retardant wall according to: NF P 92-503 M2
- conforms to RoHS guideline

**Temperature Range**

- 10°C to 80°C
- short time to 110°C

**Design, Material**

- CP construction
- clamp profile supporting spiral: galvanised steel
  - fabric-reinforced tape; wall: PVC coated fabric

**Delivery variants**

- further diameters and lengths available on request
- grey (standard), black
- stainless steel (INOX) clamp profile
- double-layer

I.D.	O.D.	Over-pressure	Under-pressure	Bending Radius	Weight	Dimensions in Stock	Order No.
in / mm	mm	bar	bar	mm	kg/m	m	
1,5 / 38	50	0,525	0,350	14	0,34	6	465-0038-0000
- / 40	52	0,515	0,340	15	0,36	6	465-0040-0000
2 / 50-51	62	0,470	0,340	18	0,44	6	465-0050-0000
- / 55	67	0,450	0,280	20	0,47	6	465-0055-0000
2,36 / 60	72	0,430	0,250	20	0,51	6	465-0060-0000
2,5 / 63-65	77	0,410	0,230	22	0,54	6	465-0065-0000
- / 70	82	0,395	0,210	-29	0,59	6	465-0070-0000
3 / 75-76	87	0,380	0,180	24	0,63	6	465-0075-0000
- / 80	92	0,370	0,160	24	0,66	6	465-0080-0000
3,5 / 89-90	102	0,345	0,110	26	0,74	6	465-0090-0000
4 / 100-102	112	0,210	0,100	28	0,54	6	465-0100-0000
- / 110	122	0,200	0,085	30	0,58	3 6	465-0110-0000
4,5 / 114-115	127	0,195	0,080	32	0,60	3 6	465-0115-0000
4,72 / 120	132	0,190	0,075	32	0,63	3 6	465-0120-0000
5 / 125-127	137	0,185	0,070	34	0,66	3 6	465-0125-0000
- / 130	142	0,180	0,060	34	0,68	3 6	465-0130-0000
5,5 / 140	152	0,175	0,050	36	0,73	3 6	465-0140-0000
6 / 150-152	162	0,140	0,040	38	0,79	3 6	465-0150-0000
6,3 / 160	172	0,135	0,035	40	0,83	3 6	465-0160-0000
6,5 / 165	177	0,135	0,035	41	0,85	3 6	465-0165-0000
- / 170	182	0,130	0,035	42	0,88	3 6	465-0170-0000
- / 175	187	0,130	0,030	44	0,90	3 6	465-0175-0000
7 / 178-180	192	0,125	0,030	44	0,93	3 6	465-0180-0000
8 / 200-203	212	0,105	0,025	48	0,80	3 6	465-0200-0000
- / 215	227	0,100	0,020	52	0,85	3 6	465-0215-0000
- / 225	237	0,095	0,020	54	0,88	3 6	465-0225-0000
9 / 228-229	240	0,095	0,020	54	0,90	3 6	465-0228-0000
- / 250	262	0,075	0,020	58	0,98	3 6	465-0250-0000
10 / 254	266	0,075	0,020	59	1,00	3 6	465-0254-0000
- / 275	287	0,070	0,015	64	1,08	3 6	465-0275-0000

Overpressure and underpressure are recommended threshold operating values, products can be subjected to higher loads upon request. The bending radius is measured through the inside of the hose arch. Additional technical data at [www.norres.com](http://www.norres.com). The right to make technical modifications is reserved. All values determined at 20°C and are approx. data.



I.D.	O.D.	Over-pressure	Under-pressure	Bending Radius	Weight	Dimensions in Stock	Order No.
in / mm	mm	bar	bar	mm	kg/m	m	
11 / 280	292	0,070	0,015	65	1,10	3 6	465-0280-0000
- / 300	312	0,065	0,010	68	1,17	3 6	465-0300-0000
12 / 305	317	0,065	0,010	69	1,19	3 6	465-0305-0000
- / 315	327	0,065	0,010	71	1,23	3 6	465-0315-0000
- / 325	337	0,060	0,010	74	1,27	3 6	465-0325-0000
13 / 330	342	0,060	0,010	75	1,29	3 6	465-0330-0000
- / 350	362	0,050	0,010	78	1,36	3 6	465-0350-0000
14 / 356	368	0,050	0,010	79	1,39	3 6	465-0356-0000
- / 375	387	0,045	0,010	83	1,46	3 6	465-0375-0000
- / 400	412	0,045	0,010	88	1,55	3 6	465-0400-0000
16 / 405-406	418	0,045	0,010	89	1,58	3 6	465-0406-0000
- / 450	462	0,040	0,005	98	1,75	3 6	465-0450-0000
18 / 457	469	0,040	0,005	100	1,77	3 6	465-0457-0000
- / 500	512	0,040	0,005	108	1,94	3 6	465-0500-0000
20 / 508	520	0,025	0,005	110	1,97	3 6	465-0508-0000
- / 600	612	0,025	0,005	128	2,32	3 6	465-0600-0000
24 / 610	622	0,025	0,005	130	2,36	3 6	465-0610-0000
- / 700	712	0,020	0,002	148	2,70	3 6	465-0700-0000
28 / 712	724	0,020	0,001	151	2,75	3 6	465-0712-0000
- / 750	762	0,020	0,001	158	2,90	3 6	465-0750-0000
- / 800	812	0,020	0,001	168	3,09	3 6	465-0800-0000
32 / 813-815	827	0,020	0,001	171	3,14	3 6	465-0815-0000
- / 900	912	0,015	0,001	188	3,47	3 6	465-0900-0000
36 / 915	927	0,015	0,001	191	3,53	3 6	465-0915-0000
- / 1000	1012	0,010	0,001	208	3,85	3 6	465-1000-0000
40 / 1016	1028	0,010	0,001	211	3,91	3 6	465-1016-0000

Overpressure and underpressure are recommended threshold operating values, products can be subjected to higher loads upon request. The bending radius is measured through the inside of the hose arch. The right to make technical modifications is reserved. All values determined at 20°C and are approx. data. Additional technical data at [www.norres.com/en/technology/](http://www.norres.com/en/technology/)

Accessories



CLAMP 212



CLAMP 217



CLAMP 213



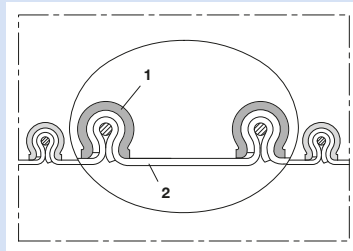
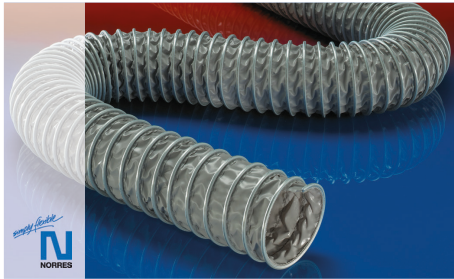
CONNECT 228



CONNECT 270-271

Overpressure and underpressure are recommended threshold operating values, products can be subjected to higher loads upon request. The bending radius is measured through the inside of the hose arch. Additional technical data at [www.norres.com](http://www.norres.com). The right to make technical modifications is reserved. All values determined at 20°C and are approx. data.





PVC clamp profile hose (clip hose), (to +120°C)

**Applications**

- flexible hose/ ducting for gases and for dust, powder, fibres
- welding fume extraction
- extraction arm

**Properties**

- fabric reinforced
- abrasion protection via external clamp profile
- secure clamping of the wall within the clamp profile
- highly flexible + compressible
- very good heat resistance

- good resistance to alkalis and acids
- good resistance to chemicals
- flame-retardant wall according to: NF P 92-503 M1
- conforms to RoHS guideline

**Temperature Range**

- -10°C to 110°C
- short time to 120°C

**Design, Material**

CP construction

1. clamp profile supporting spiral: galvanised steel

2. fabric-reinforced tape; Wall: PVC coated glass fabric

**Delivery variants**

- further diameters and lengths available on request
- grey (standard)
- stainless steel (INOX) clamp profile
- double-layer

I.D.	O.D.	Over-pressure	Under-pressure	Bending Radius	Weight	Dimensions in Stock	Order No.
in / mm	mm	bar	bar	mm	kg/m	m	
1,5 / 38	50	0,900	0,370	14	0,23	6	466-0038-0000
- / 40	52	0,870	0,360	15	0,36	6	466-0040-0000
2 / 50-51	62	0,820	0,320	18	0,44	6	466-0050-0000
- / 55	67	0,750	0,260	20	0,48	6	466-0055-0000
2,36 / 60	72	0,650	0,220	20	0,52	6	466-0060-0000
2,5 / 63-65	77	0,590	0,200	22	0,55	6	466-0065-0000
- / 70	82	0,520	0,170	22	0,59	6	466-0070-0000
3 / 75-76	87	0,450	0,145	24	0,64	6	466-0075-0000
- / 80	92	0,420	0,120	24	0,67	6	466-0080-0000
3,5 / 89-90	102	0,350	0,105	26	0,75	6	466-0090-0000
4 / 100-102	112	0,300	0,090	28	0,55	6	466-0100-0000
- / 110	122	0,250	0,070	30	0,59	3 6	466-0110-0000
4,5 / 114-115	127	0,230	0,065	32	0,62	3 6	466-0115-0000
4,72 / 120	132	0,220	0,060	32	0,64	3 6	466-0120-0000
5 / 125-127	137	0,210	0,055	34	0,67	3 6	466-0125-0000
- / 130	142	0,190	0,050	34	0,69	3 6	466-0130-0000
5,5 / 140	152	0,170	0,045	36	0,74	3 6	466-0140-0000
6 / 150-152	162	0,160	0,040	38	0,80	3 6	466-0150-0000
6,3 / 160	172	0,140	0,035	40	0,84	3 6	466-0160-0000
6,5 / 165	177	0,135	0,035	41	0,87	3 6	466-0165-0000
- / 170	182	0,130	0,030	42	0,90	3 6	466-0170-0000
- / 175	187	0,120	0,025	44	0,92	3 6	466-0175-0000
7 / 178-180	192	0,115	0,022	44	0,95	3 6	466-0180-0000
8 / 200-203	212	0,100	0,020	48	0,81	3 6	466-0200-0000
- / 215	227	0,085	0,018	52	0,86	3 6	466-0215-0000
- / 225	237	0,080	0,016	54	0,90	3 6	466-0225-0000
9 / 228-229	240	0,080	0,015	54	0,92	3 6	466-0228-0000
- / 250	262	0,070	0,012	58	1,00	3 6	466-0250-0000
10 / 254	266	0,070	0,010	59	1,02	3 6	466-0254-0000
- / 275	287	0,060	0,010	64	1,10	3 6	466-0275-0000

Overpressure and underpressure are recommended threshold operating values, products can be subjected to higher loads upon request. The bending radius is measured through the inside of the hose arch. Additional technical data at [www.norres.com](http://www.norres.com). The right to make technical modifications is reserved. All values determined at 20°C and are approx. data.



I.D.	O.D.	Over-pressure	Under-pressure	Bending Radius	Weight	Dimensions in Stock	Order No.
in / mm	mm	bar	bar	mm	kg/m	m	
11 / 280	292	0,060	0,010	65	1,12	3 6	466-0280-0000
- / 300	312	0,055	0,009	68	1,20	3 6	466-0300-0000
12 / 305	317	0,055	0,010	69	1,22	3 6	466-0305-0000
- / 315	327	0,050	0,008	71	1,26	3 6	466-0315-0000
- / 325	337	0,045	0,007	74	1,29	3 6	466-0325-0000
13 / 330	342	0,045	0,005	75	1,31	3 6	466-0330-0000
- / 350	362	0,040	0,006	78	1,39	3 6	466-0350-0000
14 / 356	368	0,040	0,005	79	1,42	3 6	466-0356-0000
- / 375	387	0,035	0,005	83	1,49	3 6	466-0375-0000
- / 400	412	0,030	0,005	88	1,59	3 6	466-0400-0000
16 / 405-406	418	0,030	0,005	89	1,61	3 6	466-0406-0000
- / 450	462	0,025	0,004	98	1,78	3 6	466-0450-0000
18 / 457	469	0,025	0,005	100	1,81	3 6	466-0457-0000
- / 500	512	0,020	0,003	108	1,98	3 6	466-0500-0000
20 / 508	520	0,020	0,005	110	2,01	3 6	466-0508-0000
- / 600	612	0,015	0,002	128	2,37	3 6	466-0600-0000
24 / 610	622	0,015	0,002	130	2,41	3 6	466-0610-0000
- / 700	712	0,015	0,002	148	2,76	3 6	466-0700-0000
28 / 712	724	0,015	0,002	151	2,81	3 6	466-0712-0000
- / 750	762	0,015	0,001	158	2,96	3 6	466-0750-0000
- / 800	812	0,010	0,001	168	3,15	3 6	466-0800-0000
32 / 813-815	827	0,010	0,001	171	3,21	3 6	466-0815-0000
- / 900	912	0,010	0,001	188	3,54	3 6	466-0900-0000
36 / 915	927	0,010	0,001	191	3,60	3 6	466-0915-0000
- / 1000	1012	0,010	0,001	208	3,93	3 6	466-1000-0000
40 / 1016	1028	0,010	0,001	211	4,00	3 6	466-1016-0000

Overpressure and underpressure are recommended threshold operating values, products can be subjected to higher loads upon request. The bending radius is measured through the inside of the hose arch. The right to make technical modifications is reserved. All values determined at 20°C and are approx. data. Additional technical data at [www.norres.com/en/technology/](http://www.norres.com/en/technology/)

### Accessories



CLAMP 212



CLAMP 217



CLAMP 213

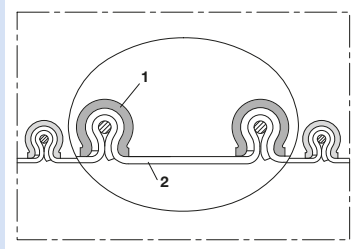
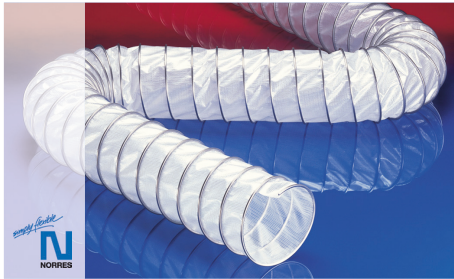


CONNECT 228



CONNECT 270-271

Overpressure and underpressure are recommended threshold operating values, products can be subjected to higher loads upon request. The bending radius is measured through the inside of the hose arch. Additional technical data at [www.norres.com](http://www.norres.com). The right to make technical modifications is reserved. All values determined at 20°C and are approx. data.



Polyethylene clamp profile hose (clip hose)

**Applications**

- flexible hose/ ducting for gases and for dust, powder, fibres
- chemical industry: chemical vapours, vapour return hose at loading arm, paint steam, spray mist extraction
- asbestos removal
- construction drying

**Properties**

- abrasion protection via external clamp profile

- secure clamping of the wall within the clamp profile
- highly flexible + compressible 4:1
- odourless and tasteless
- good resistance to alkalis and acids
- extremely good resistance to chemicals
- conforms to RoHS guideline

**Temperature Range**

- 35°C to 80°C

**Design, Material**

CP construction

- clamp profile supporting spiral: galvanised steel
- wall: polyethylene fabric (LDPE + HDPE)

**Delivery variants**

- further diameters and lengths available on request
- stainless steel (INOX) clamp profile
- double-layer

I.D.	O.D.	Over-pressure	Under-pressure	Bending Radius	Weight	Dimensions in Stock	Order No.
in / mm	mm	bar	bar	mm	kg/m	m	
2 / 50-51	62	0,490	0,270	18	0,44	6	457-0050-0000
- / 55	67	0,460	0,250	20	0,47	6	457-0055-0000
2,36 / 60	72	0,440	0,220	20	0,51	6	457-0060-0000
2,5 / 63-65	77	0,420	0,200	22	0,54	6	457-0065-0000
- / 70	82	0,400	0,180	22	0,59	6	457-0070-0000
3 / 75-76	87	0,380	0,160	24	0,63	6	457-0075-0000
- / 80	92	0,365	0,140	24	0,67	6	457-0080-0000
3,5 / 89-90	102	0,340	0,100	26	0,75	6	457-0090-0000
4 / 100-102	112	0,225	0,085	28	0,54	6	457-0100-0000
- / 110	122	0,210	0,075	30	0,58	3 6	457-0110-0000
4,5 / 114-115	127	0,205	0,070	32	0,61	3 6	457-0115-0000
4,72 / 120	132	0,200	0,065	32	0,64	3 6	457-0120-0000
5 / 125-127	137	0,195	0,060	34	0,66	3 6	457-0125-0000
- / 130	142	0,180	0,055	34	0,69	3 6	457-0130-0000
5,5 / 140	152	0,180	0,040	36	0,74	3 6	457-0140-0000
6 / 150-152	162	0,120	0,035	38	0,79	3 6	457-0150-0000
6,3 / 160	172	0,115	0,030	40	0,84	3 6	457-0160-0000
6,5 / 165	177	0,110	0,030	41	0,86	3 6	457-0165-0000
- / 170	182	0,110	0,030	42	0,89	3 6	457-0170-0000
- / 175	187	0,110	0,030	44	0,91	3 6	457-0175-0000
7 / 178-180	192	0,110	0,025	44	0,94	3 6	457-0180-0000
8 / 200-203	212	0,100	0,020	48	0,81	3 6	457-0200-0000
- / 215	227	0,095	0,020	52	0,86	3 6	457-0215-0000
- / 225	237	0,090	0,020	54	0,89	3 6	457-0225-0000
9 / 228-229	240	0,08	0,020	54	0,91	3 6	457-0228-0000
- / 250	262	0,070	0,015	58	0,99	3 6	457-0250-0000
10 / 254	266	0,065	0,015	59	1,01	3 6	457-0254-0000
- / 275	287	0,060	0,015	64	1,09	3 6	457-0275-0000
11 / 280	292	0,060	0,015	65	1,11	3 6	457-0280-0000
- / 300	312	0,060	0,010	68	1,18	3 6	457-0300-0000

Overpressure and underpressure are recommended threshold operating values, products can be subjected to higher loads upon request. The bending radius is measured through the inside of the hose arch. Additional technical data at [www.norres.com](http://www.norres.com). The right to make technical modifications is reserved. All values determined at 20°C and are approx. data.

I.D.	O.D.	Over-pressure	Under-pressure	Bending Radius	Weight	Dimensions in Stock	Order No.
in / mm	mm	bar	bar	mm	kg/m	m	
12 / 305	317	0,055	0,010	69	1,2	3 6	457-0305-0000
- / 315	327	0,050	0,010	71	1,24	3 6	457-0315-0000
- / 325	337	0,045	0,010	74	1,28	3 6	457-0325-0000
13 / 330	342	0,045	0,010	75	1,3	3 6	457-0330-0000
- / 350	362	0,045	0,010	78	1,38	3 6	457-0350-0000
14 / 356	368	0,040	0,010	79	1,4	3 6	457-0356-0000
- / 375	387	0,040	0,010	83	1,47	3 6	457-0375-0000
- / 400	412	0,040	0,005	88	1,57	3 6	457-0400-0000
16 / 405-406	418	0,035	0,005	89	1,59	3 6	457-0406-0000
- / 450	462	0,035	0,005	98	1,76	3 6	457-0450-0000
18 / 457	469	0,035	0,005	100	1,79	3 6	457-0457-0000
- / 500	512	0,025	0,005	108	1,96	3 6	457-0500-0000
20 / 508	520	0,025	0,005	110	1,99	3 6	457-0508-0000
- / 600	612	0,025	0,005	128	2,35	3 6	457-0600-0000
24 / 610	622	0,025	0,005	130	2,38	3 6	457-0610-0000
- / 700	712	0,020	0,002	148	2,73	3 6	457-0700-0000
28 / 712	724	0,020	0,001	151	2,78	3 6	457-0712-0000
- / 750	762	0,020	0,001	158	2,93	3 6	457-0750-0000
- / 800	812	0,015	0,001	168	3,12	3 6	457-0800-0000
32 / 813-815	827	0,015	0,001	171	3,18	3 6	457-0815-0000
- / 900	912	0,015	0,001	188	3,51	3 6	457-0900-0000
36 / 915	927	0,015	0,001	191	3,56	3 6	457-0915-0000
- / 1000	1012	0,015	0,001	208	3,89	3 6	457-1000-0000
40 / 1016	1028	0,015	0,001	211	3,96	3 6	457-1016-0000

Overpressure and underpressure are recommended threshold operating values, products can be subjected to higher loads upon request. The bending radius is measured through the inside of the hose arch. The right to make technical modifications is reserved. All values determined at 20°C and are approx. data. Additional technical data at [www.norres.com/en/technology/](http://www.norres.com/en/technology/)

### Accessories



CLAMP 212



CLAMP 217



CLAMP 213

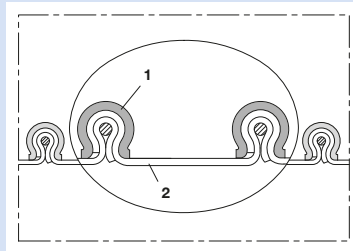


CONNECT 228



CONNECT 270-271

Overpressure and underpressure are recommended threshold operating values, products can be subjected to higher loads upon request. The bending radius is measured through the inside of the hose arch. Additional technical data at [www.norres.com](http://www.norres.com). The right to make technical modifications is reserved. All values determined at 20°C and are approx. data.



Electrically conductive polyethylene clamp profile hose (clip hose)

**Applications**

- flexible hose/ ducting for gases and for dust, powder, fibres
- extraction arm
- chemical industry: chemical vapours, vapour return hose at loading arm, paint steam, spray mist extraction
- explosion hazard area

**Properties**

- abrasion protection via external clamp profile
- secure clamping of the wall within the clamp profile

- highly flexible + compressible 4:1
- good resistance to alkalis and acids
- extremely good resistance to chemicals
- electrically conductive wall: electrical and surface resistance  $<10^9 \Omega$
- in accordance with ATEX 2014/34/EU (1999/92/EC) and German TRGS 727: aspiration of combustible dusts (Zone 22 inside), for use in zone 1 and 2 (gases), for use in Zone 0 (gases)
- conforms to RoHS guideline

**Temperature Range**

- -35°C to 80°C

**Design, Material**

CP construction

1. clamp profile supporting spiral: galvanised steel
2. wall: electrically conductive polyethylene (PE)

**Delivery variants**

- further diameters and lengths available on request
- black (standard)
- stainless steel (INOX) clamp profile

I.D.	O.D.	Over-pressure	Under-pressure	Bending Radius	Weight	Dimensions in Stock	Order No.
in / mm	mm	bar	bar	mm	kg/m	m	
1,5 / 38	50	0,580	0,310	14	0,480	6	457-0038-1003
- / 40	52	0,560	0,305	15	0,500	6	457-0040-1003
2 / 50-51	62	0,490	0,270	18	0,600	6	457-0050-1003
- / 55	67	0,460	0,250	20	0,650	6	457-0055-1003
2,36 / 60	72	0,440	0,220	20	0,700	6	457-0060-1003
2,5 / 63-65	77	0,420	0,200	22	0,760	6	457-0065-1003
- / 70	82	0,400	0,180	22	0,810	6	457-0070-1003
3 / 75-76	87	0,380	0,160	24	0,860	6	457-0075-1003
- / 80	92	0,365	0,140	24	0,920	6	457-0080-1003
3,5 / 89-90	102	0,340	0,100	26	1,020	6	457-0090-1003
4 / 100-102	112	0,225	0,085	28	0,820	6	457-0100-1003
- / 110	122	0,210	0,075	30	0,900	3 6	457-0110-1003
4,5 / 114-115	127	0,205	0,070	32	0,940	3 6	457-0115-1003
4,72 / 120	132	0,200	0,065	32	0,980	3 6	457-0120-1003
5 / 125-127	137	0,195	0,060	34	1,000	3 6	457-0125-1003
- / 130	142	0,190	0,055	34	1,060	3 6	457-0130-1003
5,5 / 140	152	0,180	0,040	36	1,140	3 6	457-0140-1003
6 / 150-152	162	0,120	0,035	38	0,820	3 6	457-0150-1003
6,3 / 160	172	0,115	0,030	40	0,840	3 6	457-0160-1003
6,5 / 165	177	0,110	0,030	41	0,865	3 6	457-0165-1003
- / 170	182	0,110	0,030	42	0,890	3 6	457-0170-1003
- / 175	187	0,110	0,030	44	0,910	3 6	457-0175-1003
7 / 178-180	192	0,110	0,025	44	0,940	3 6	457-0180-1003
8 / 200-203	212	0,100	0,020	48	0,800	3 6	457-0200-1003
- / 215	227	0,095	0,020	52	0,860	3 6	457-0215-1003
- / 225	237	0,090	0,020	54	0,890	3 6	457-0225-1003
9 / 228-229	240	0,080	0,020	54	0,900	3 6	457-0228-1003
- / 250	262	0,070	0,015	58	0,990	3 6	457-0250-1003
10 / 254	266	0,065	0,015	59	1,005	3 6	457-0254-1003

Overpressure and underpressure are recommended threshold operating values, products can be subjected to higher loads upon request. The bending radius is measured through the inside of the hose arch. Additional technical data at [www.norres.com](http://www.norres.com). The right to make technical modifications is reserved. All values determined at 20°C and are approx. data.

I.D.	O.D.	Over-pressure	Under-pressure	Bending Radius	Weight	Dimensions in Stock	Order No.
in / mm	mm	bar	bar	mm	kg/m	m	
- / 275	287	0,060	0,015	64	1,090	3 6	457-0275-1003
11 / 280	292	0,060	0,015	65	1,110	3 6	457-0280-1003
- / 300	312	0,060	0,010	68	1,180	3 6	457-0300-1003
12 / 305	317	0,055	0,010	69	1,205	3 6	457-0305-1003
- / 315	327	0,050	0,010	71	1,250	3 6	457-0315-1003
- / 325	337	0,045	0,010	74	1,290	3 6	457-0325-1003
13 / 330	342	0,045	0,010	75	1,310	3 6	457-0330-1003
- / 350	362	0,045	0,010	78	1,380	3 6	457-0350-1003
14 / 356	368	0,040	0,010	79	1,405	3 6	457-0356-1003
- / 375	387	0,040	0,010	83	1,480	3 6	457-0375-1003
- / 400	412	0,040	0,005	88	1,570	3 6	457-0400-1003
16 / 405-406	418	0,035	0,005	89	1,595	3 6	457-0406-1003
- / 450	462	0,035	0,005	98	1,770	3 6	457-0450-1003
18 / 457	469	0,035	0,005	100	1,795	3 6	457-0457-1003
- / 500	512	0,025	0,005	108	1,960	3 6	457-0500-1003
20 / 508	520	0,025	0,005	110	1,990	3 6	457-0508-1003
- / 600	612	0,025	0,005	128	2,360	3 6	457-0600-1003
24 / 610	622	0,025	0,005	130	2,400	3 6	457-0610-1003
- / 700	712	0,020	0,002	148	2,740	3 6	457-0700-1003
28 / 712	724	0,020	0,001	151	2,785	3 6	457-0712-1003
- / 750	762	0,020	0,001	158	2,920	3 6	457-0750-1003
- / 800	812	0,015	0,001	168	3,120	3 6	457-0800-1003
32 / 813-815	827	0,015	0,001	171	3,180	3 6	457-0815-1003
- / 900	912	0,015	0,001	188	3,510	3 6	457-0900-1003
36 / 915	927	0,015	0,001	191	3,570	3 6	457-0915-1003
- / 1000	1012	0,015	0,001	208	3,900	3 6	457-1000-1003
40 / 1016	1028	0,015	0,001	211	3,960	3 6	457-1016-1003

Overpressure and underpressure are recommended threshold operating values, products can be subjected to higher loads upon request. The bending radius is measured through the inside of the hose arch. The right to make technical modifications is reserved. All values determined at 20°C and are approx. data. Additional technical data at [www.norres.com/en/technology/](http://www.norres.com/en/technology/)

### Accessories



CLAMP 212



CLAMP 217



CLAMP 213

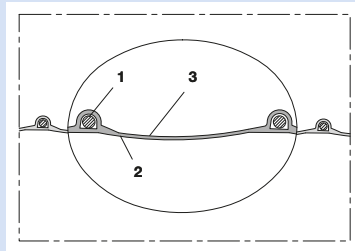


CONNECT 228



CONNECT 270-271

Overpressure and underpressure are recommended threshold operating values, products can be subjected to higher loads upon request. The bending radius is measured through the inside of the hose arch. Additional technical data at [www.norres.com](http://www.norres.com). The right to make technical modifications is reserved. All values determined at 20°C and are approx. data.



Electrically conductive polyethylene hose, light

**Applications**

- flexible hose/ ducting for gases and for dust, powder, fibres
- extraction arm
- galvanic extraction
- chemical industry: chemical vapours, vapour return hose at loading arm, paint steam, spray mist extraction
- explosion hazard area
- Coal mine, mine, tunnelling: ventilation, methane extraction

**Properties**

- light weight
- highly flexible + compressible
- good resistance to alkalis and acids

- extremely good resistance to chemicals
- electrically conductive wall: electrical and surface resistance  $<10^3 \Omega$
- in accordance with ATEX 2014/34/EU (1999/92/EC) and German TRGS 727: pneumatic transport of flammable dusts and bulk materials (Zone 20, 21, 22 inside), aspiration of combustible dusts (Zone 22 inside), for conveying for flammable liquids (inside zone 0, 1, 2), for conveying for non-flammable liquids, for use in zone 1 and 2 (gases), for use in zone 0 (gases)
- conforms to RoHS guideline

**Temperature Range**

- 35°C to 80°C

**Design, Material**

- patented PROTAPE® tape hose
- spring steel wire integrated in wall
  - wall: electrically conductive polyethylene (PE)
  - wall thickness 0,4 mm approx.

**Delivery variants**

- further diameters and lengths available on request
- black (standard)
- customer-specific branding

I.D.	O.D.	Over-pressure	Under-pressure	Bending Radius	Weight	Dimensions in Stock	Order No.
in / mm	mm	bar	bar	mm	kg/m	m	
- / 40	47	0,470	0,280	27	0,300	10	322-0040-1003
2 / 50-51	58	0,380	0,240	33	0,180	10	322-0050-1003
2,36 / 60	68	0,315	0,190	38	0,210	10	322-0060-1003
3 / 75-76	83	0,255	0,130	46	0,260	10	322-0075-1003
- / 80	88	0,240	0,120	48	0,290	10	322-0080-1003
3,5 / 89-90	98	0,210	0,100	53	0,310	10	322-0090-1003
4 / 100-102	108	0,190	0,080	58	0,370	10	322-0100-1003
- / 110	118	0,175	0,075	63	0,400	10	322-0110-1003
4,72 / 120	128	0,160	0,070	68	0,440	10	322-0120-1003
5 / 125-127	133	0,155	0,055	71	0,470	10	322-0125-1003
5,5 / 140	148	0,135	0,050	78	0,520	10	322-0140-1003
6 / 150-152	158	0,125	0,050	83	0,550	10	322-0150-1003
6,3 / 160	168	0,120	0,045	88	0,580	10	322-0160-1003
7 / 178-180	188	0,105	0,035	98	0,670	10	322-0180-1003
8 / 200-203	208	0,095	0,035	108	0,730	10	322-0200-1003
- / 250	258	0,075	0,015	133	0,990	10	322-0250-1003
- / 300	309	0,065	0,010	159	1,250	10	322-0300-1003

Overpressure and underpressure are recommended threshold operating values, products can be subjected to higher loads upon request. The bending radius is measured through the inside of the hose arch. The right to make technical modifications is reserved. All values determined at 20°C and are approx. data. Additional technical data at [www.norres.com/en/technology/](http://www.norres.com/en/technology/)

Overpressure and underpressure are recommended threshold operating values, products can be subjected to higher loads upon request. The bending radius is measured through the inside of the hose arch. Additional technical data at [www.norres.com](http://www.norres.com). The right to make technical modifications is reserved. All values determined at 20°C and are approx. data.

Accessories



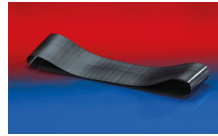
CLAMP 212



CLAMP 217



CLAMP 213



CONNECT 228



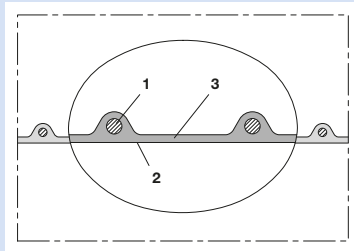
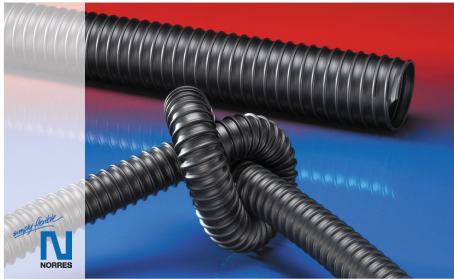
CONNECT 223



CONNECT 270-271

Overpressure and underpressure are recommended threshold operating values, products can be subjected to higher loads upon request. The bending radius is measured through the inside of the hose arch. Additional technical data at [www.norres.com](http://www.norres.com). The right to make technical modifications is reserved. All values determined at 20°C and are approx. data.





Electrically conductive polyethylene hose, medium-heavy

**Applications**

- flexible hose/ ducting for gases and for dust, powder, fibres
- chemical industry: chemical vapours, vapour return hose at loading arm, paint steam, spray mist extraction
- explosion hazard area
- Coal mine, mine, tunnelling: ventilation, methane extraction

**Properties**

- medium-heavy duty
- good resistance to alkalis and acids
- extremely good resistance to chemicals

- electrically conductive wall: electrical and surface resistance  $<10^3 \Omega$
- in accordance with ATEX 2014/34/EU (1999/92/EC) and German TRGS 727: pneumatic transport of flammable dusts and bulk materials (Zone 20, 21, 22 inside), aspiration of combustible dusts (Zone 22 inside), for conveying for flammable liquids (inside zone 0, 1, 2), for conveying for non-flammable liquids, for use in zone 1 and 2 (gases), for use in zone 0 (gases)
- conforms to RoHS guideline

**Temperature Range**

- 35°C to 80°C

**Design, Material**

AIRDUC® profile hose

- spring steel wire firmly embedded in wall
- wall: electrically conductive polyethylene (PE)
- wall thickness 0,8 mm approx.

**Delivery variants**

- further diameters and lengths available on request
- black (standard)
- customer-specific branding

I.D.	O.D.	Over-pressure	Under-pressure	Bending Radius	Weight	Dimensions in Stock	Order No.
in / mm	mm	bar	bar	mm	kg/m	m	
1,25 / 32	39	0,780	0,530	23	0,220	10	362-0032-1003
1,5 / 38	45	0,660	0,450	26	0,260	10	362-0038-1003
- / 40	47	0,630	0,425	27	0,270	10	362-0040-1003
2 / 50-51	57	0,505	0,340	32	0,330	10	362-0050-1003
2,36 / 60	67	0,425	0,295	37	0,400	10	362-0060-1003
- / 70	79	0,365	0,210	44	0,460	10	362-0070-1003
- / 80	89	0,320	0,185	49	0,520	10	362-0080-1003
3,5 / 89-90	99	0,285	0,165	54	0,590	10	362-0090-1003
4 / 100-102	109	0,255	0,145	59	0,760	10	362-0100-1003
5 / 125-127	134	0,205	0,120	72	0,940	10	362-0125-1003
5,5 / 140	149	0,185	0,105	79	1,060	10	362-0140-1003
6 / 150-152	159	0,170	0,100	84	1,130	10	362-0150-1003
6,3 / 160	169	0,160	0,090	89	1,210	10	362-0160-1003
8 / 200-203	210	0,130	0,075	110	1,510	10	362-0200-1003
- / 250	260	0,105	0,060	135	1,880	10	362-0250-1003
11 / 280	290	0,090	0,055	150	2,100	10	362-0280-1003
- / 300	310	0,085	0,050	160	2,260	10	362-0300-1003

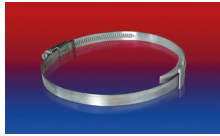
Overpressure and underpressure are recommended threshold operating values, products can be subjected to higher loads upon request. The bending radius is measured through the inside of the hose arch. The right to make technical modifications is reserved. All values determined at 20°C and are approx. data. Additional technical data at [www.norres.com/en/technology/](http://www.norres.com/en/technology/)

Overpressure and underpressure are recommended threshold operating values, products can be subjected to higher loads upon request. The bending radius is measured through the inside of the hose arch. Additional technical data at [www.norres.com](http://www.norres.com). The right to make technical modifications is reserved. All values determined at 20°C and are approx. data.

Accessories



CLAMP 212



CLAMP 210 BRIDGE CLAMP



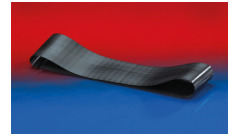
CLAMP 212 EC



CLAMP 217



CLAMP 213



CONNECT 228

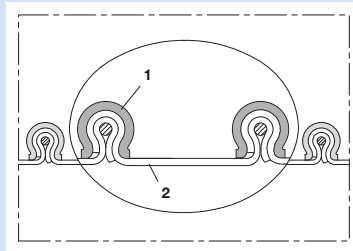


CONNECT 223



CONNECT 270-271

Overpressure and underpressure are recommended threshold operating values, products can be subjected to higher loads upon request. The bending radius is measured through the inside of the hose arch. Additional technical data at [www.norres.com](http://www.norres.com). The right to make technical modifications is reserved. All values determined at 20°C and are approx. data.



Clamp profile hose (clip hose), (up to +170°C)

**Applications**

- flexible hose/ ducting for hot and cold gases and for dust, powder, fibres
- chemical industry: chemical vapours, vapour return hose at loading arm, paint steam, spray mist extraction
- industrial washing machine: air blower hose for drying
- high temperature extraction: oven, foundry, furnace, smelting, ceramics industry, glass industry, steel plant, aluminium mill
- bellows, compensators

**Properties**

- abrasion protection via external clamp profile
- secure clamping of the wall within the clamp profile
- highly flexible + compressible 4:1
- vibration resistant
- very good heat resistance
- good resistance to oil, gasoline and chemicals
- good resistance to alkalis and acids
- conforms to RoHS guideline

**Temperature Range**

- -40°C to 170°C

**Design, Material**

CP construction

1. clamp profile supporting spiral: galvanised steel
2. wall: CSM coated polyester fabric

**Delivery variants**

- further diameters and lengths available on request
- stainless steel (INOX) clamp profile
- double-layer

I.D.	O.D.	Over-pressure	Under-pressure	Bending Radius	Weight	Dimensions in Stock	Order No.
in / mm	mm	bar	bar	mm	kg/m	m	
1,5 / 38	50	0,785	0,450	21	0,570	6	450-0038-0000
- / 40	52	0,765	0,440	22	0,590	6	450-0040-0000
2 / 50-51	62	0,630	0,380	25	0,760	6	450-0050-0000
- / 55	67	0,600	0,350	27	0,820	6	450-0055-0000
2,36 / 60	72	0,570	0,320	28	0,890	6	450-0060-0000
2,5 / 63-65	77	0,545	0,290	30	0,960	6	450-0065-0000
- / 70	82	0,525	0,260	31	1,030	6	450-0070-0000
3 / 75-76	87	0,500	0,230	33	1,100	6	450-0075-0000
- / 80	92	0,485	0,200	34	1,160	6	450-0080-0000
3,5 / 89-90	102	0,450	0,140	37	1,300	6	450-0090-0000
4 / 100-102	112	0,300	0,120	28	1,030	6	450-0100-0000
- / 110	122	0,285	0,105	30	1,130	3 6	450-0110-0000
4,5 / 114-115	127	0,275	0,098	32	1,170	3 6	450-0115-0000
4,72 / 120	132	0,270	0,090	32	1,220	3 6	450-0120-0000
5 / 125-127	137	0,260	0,085	34	1,270	3 6	450-0125-0000
- / 130	142	0,255	0,075	34	1,320	3 6	450-0130-0000
5,5 / 140	152	0,245	0,060	36	1,420	3 6	450-0140-0000
6 / 150-152	162	0,165	0,050	38	1,040	3 6	450-0150-0000
6,3 / 160	172	0,160	0,045	40	1,110	3 6	450-0160-0000
6,5 / 165	177	0,155	0,040	41	1,140	3 6	450-0165-0000
- / 170	182	0,155	0,040	42	1,170	3 6	450-0170-0000
- / 175	187	0,150	0,040	44	1,210	3 6	450-0175-0000
7 / 178-180	192	0,150	0,040	44	1,240	3 6	450-0180-0000
8 / 200-203	212	0,140	0,030	48	1,370	3 6	450-0200-0000
- / 215	227	0,135	0,030	52	1,470	3 6	450-0215-0000
- / 225	237	0,130	0,025	54	1,540	3 6	450-0225-0000
9 / 228-229	240	0,130	0,025	57	1,560	3 6	450-0228-0000
- / 250	262	0,100	0,025	58	1,710	3 6	450-0250-0000
10 / 254	266	0,095	0,025	60	1,850	3 6	450-0254-0000

Overpressure and underpressure are recommended threshold operating values, products can be subjected to higher loads upon request. The bending radius is measured through the inside of the hose arch. Additional technical data at [www.norres.com](http://www.norres.com). The right to make technical modifications is reserved. All values determined at 20°C and are approx. data.

I.D.	O.D.	Over-pressure	Under-pressure	Bending Radius	Weight	Dimensions in Stock	Order No.
in / mm	mm	bar	bar	mm	kg/m	m	
- / 275	287	0,090	0,020	64	1,870	3 6	450-0275-0000
11 / 280	292	0,090	0,020	65	1,960	3 6	450-0280-0000
- / 300	312	0,085	0,015	68	2,040	3 6	450-0300-0000
12 / 305	317	0,085	0,015	69	2,070	3 6	450-0305-0000
- / 315	327	0,085	0,015	71	2,140	3 6	450-0315-0000
- / 325	337	0,080	0,015	74	2,210	3 6	450-0325-0000
13 / 330	342	0,080	0,015	75	2,250	3 6	450-0330-0000
- / 350	362	0,065	0,015	78	2,370	3 6	450-0350-0000
14 / 356	368	0,065	0,015	80	2,400	3 6	450-0356-0000
- / 375	387	0,060	0,010	83	2,500	3 6	450-0375-0000
- / 400	412	0,060	0,010	88	2,710	3 6	450-0400-0000
16 / 405-406	418	0,055	0,010	90	2,750	3 6	450-0406-0000
- / 450	462	0,055	0,010	98	3,040	3 6	450-0450-0000
18 / 457	469	0,050	0,010	100	3,090	3 6	450-0457-0000
- / 500	512	0,050	0,005	108	3,370	3 6	450-0500-0000
20 / 508	520	0,035	0,005	110	3,410	3 6	450-0508-0000
- / 600	612	0,030	0,005	128	4,040	3	450-0600-0000
24 / 610	622	0,030	0,005	130	4,120	3	450-0610-0000
- / 700	712	0,025	0,002	148	4,710	3	450-0700-0000
28 / 712	724	0,025	0,002	151	4,790	3	450-0712-0000
- / 750	762	0,025	0,002	158	5,040	3	450-0750-0000
- / 800	812	0,025	0,002	168	5,370	3	450-0800-0000
32 / 813-815	827	0,025	0,002	171	5,470	3	450-0815-0000
- / 900	912	0,020	0,001	188	6,040	3	450-0900-0000
36 / 915	927	0,020	0,001	191	6,140	3	450-0915-0000
- / 1000	1012	0,020	0,001	208	6,710	3	450-1000-0000
40 / 1016	1028	0,020	0,001	213	6,820	3	450-1016-0000

Overpressure and underpressure are recommended threshold operating values, products can be subjected to higher loads upon request. The bending radius is measured through the inside of the hose arch. The right to make technical modifications is reserved. All values determined at 20°C and are approx. data. Additional technical data at [www.norres.com/en/technology/](http://www.norres.com/en/technology/)

Accessories



CLAMP 212



CLAMP 217



CLAMP 213

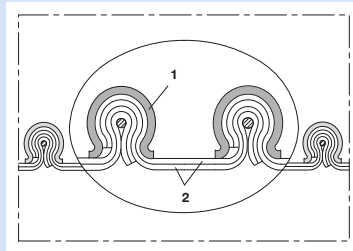


CONNECT 228



CONNECT 270-271

Overpressure and underpressure are recommended threshold operating values, products can be subjected to higher loads upon request. The bending radius is measured through the inside of the hose arch. Additional technical data at [www.norres.com](http://www.norres.com). The right to make technical modifications is reserved. All values determined at 20°C and are approx. data.



Clamp profile hose (clip hose), double-layer (up to +170°C)

**Applications**

- flexible hose/ ducting for hot and cold gases and for dust, powder, fibres
- chemical industry: chemical vapours, vapour return hose at loading arm, paint steam, spray mist extraction

**Properties**

- abrasion protection via external clamp profile
- secure clamping of the wall within the clamp profile
- highly flexible + compressible 4:1

- very good heat resistance
- anti-adhesive
- good resistance to alkalis and acids
- extremely good resistance to chemicals
- conforms to RoHS guideline

**Temperature Range**

- 40°C to 170°C

**Design, Material**

CP construction

- clamp profile supporting spiral: all-stainless steel (INOX)
- double-layer wall; wall: PTFE film interior, CSM coated polyester fabric exterior

**Delivery variants**

- further diameters and lengths available on request

I.D.	O.D.	Over-pressure	Under-pressure	Bending Radius	Weight	Dimensions in Stock	Order No.
in / mm	mm	bar	bar	mm	kg/m	m	
2 / 50-51	62	0,410	0,300	18	0,840	6	472-0050-0000
- / 55	67	0,390	0,280	20	0,910	6	472-0055-0000
2,36 / 60	72	0,370	0,250	20	0,990	6	472-0060-0000
2,5 / 63-65	77	0,355	0,230	22	1,060	6	472-0065-0000
- / 70	82	0,340	0,210	22	1,140	6	472-0070-0000
3 / 75-76	87	0,325	0,180	24	1,210	6	472-0075-0000
- / 80	92	0,315	0,160	24	1,290	6	472-0080-0000
3,5 / 89-90	102	0,290	0,110	26	1,430	6	472-0090-0000
4 / 100-102	112	0,195	0,100	28	1,160	6	472-0100-0000
- / 110	122	0,185	0,085	30	1,260	3 6	472-0110-0000
4,5 / 114-115	127	0,180	0,080	32	1,310	3 6	472-0115-0000
4,72 / 120	132	0,175	0,075	32	1,370	3 6	472-0120-0000
5 / 125-127	137	0,170	0,070	34	1,430	3 6	472-0125-0000
- / 130	142	0,165	0,060	34	1,480	3 6	472-0130-0000
5,5 / 140	152	0,160	0,050	36	1,590	3 6	472-0140-0000
6 / 150-152	162	0,110	0,040	38	1,200	3 6	472-0150-0000
6,3 / 160	172	0,105	0,035	40	1,270	3 6	472-0160-0000
6,5 / 165	177	0,100	0,035	41	1,310	3 6	472-0165-0000
- / 170	182	0,100	0,035	42	1,350	3 6	472-0170-0000
- / 175	187	0,100	0,030	44	1,390	3 6	472-0175-0000
7 / 178-180	192	0,095	0,030	44	1,420	3 6	472-0180-0000
8 / 200-203	212	0,090	0,025	48	1,580	3 6	472-0200-0000
- / 215	227	0,085	0,020	52	1,690	3 6	472-0215-0000
- / 225	237	0,085	0,020	54	1,750	3 6	472-0225-0000
9 / 228-229	240	0,085	0,020	55	1,800	3 6	472-0228-0000
- / 250	262	0,065	0,020	58	1,960	3 6	472-0250-0000
10 / 254	266	0,065	0,020	60	1,990	3 6	472-0254-0000
- / 275	287	0,060	0,015	64	2,150	3 6	472-0275-0000
11 / 280	292	0,060	0,015	65	2,200	3 6	472-0280-0000
- / 300	312	0,055	0,010	68	2,340	3 6	472-0300-0000

Overpressure and underpressure are recommended threshold operating values, products can be subjected to higher loads upon request. The bending radius is measured through the inside of the hose arch. Additional technical data at [www.norres.com](http://www.norres.com). The right to make technical modifications is reserved. All values determined at 20°C and are approx. data.

I.D.	O.D.	Over-pressure	Under-pressure	Bending Radius	Weight	Dimensions in Stock	Order No.
in / mm	mm	bar	bar	mm	kg/m	m	
12 / 305	317	0,055	0,010	69	2,380	36	472-0305-0000
- / 315	327	0,055	0,010	71	2,460	36	472-0315-0000
- / 325	337	0,055	0,010	74	2,530	36	472-0325-0000
13 / 330	342	0,050	0,010	75	2,570	36	472-0330-0000
- / 350	362	0,040	0,010	78	2,720	36	472-0350-0000
14 / 356	368	0,040	0,010	80	2,770	36	472-0356-0000
- / 375	387	0,040	0,010	83	2,910	36	472-0375-0000
- / 400	412	0,040	0,010	88	3,100	36	472-0400-0000
16 / 405-406	418	0,040	0,010	90	3,150	36	472-0406-0000
- / 450	462	0,035	0,005	98	3,490	36	472-0450-0000
18 / 457	469	0,035	0,005	100	3,540	36	472-0457-0000
- / 500	512	0,030	0,005	108	3,870	36	472-0500-0000
20 / 508	520	0,025	0,005	112	3,930	36	472-0508-0000
- / 600	612	0,020	0,005	128	4,630	3	472-0600-0000
24 / 610	622	0,020	0,005	130	4,710	3	472-0610-0000
- / 700	712	0,015	0,002	148	5,390	3	472-0700-0000
28 / 712	724	0,015	0,002	151	5,480	3	472-0712-0000
- / 750	762	0,015	0,001	158	5,780	3	472-0750-0000
- / 800	812	0,015	0,001	168	6,160	3	472-0800-0000
32 / 813-815	827	0,015	0,001	171	6,280	3	472-0815-0000
- / 900	912	0,015	0,001	188	6,920	3	472-0900-0000
36 / 915	927	0,015	0,001	191	7,030	3	472-0915-0000
- / 1000	1012	0,015	0,001	208	7,680	3	472-1000-0000
40 / 1016	1028	0,010	0,001	212	7,790	3	472-1016-0000

TEFLON® is a registered trademark of DuPont; Overpressure and underpressure are recommended threshold operating values, products can be subjected to higher loads upon request. The bending radius is measured through the inside of the hose arch. The right to make technical modifications is reserved. All values determined at 20°C and are approx. data. Additional technical data at [www.norres.com/en/technology/](http://www.norres.com/en/technology/)

## Accessories



CLAMP 212



CLAMP 217



CLAMP 213

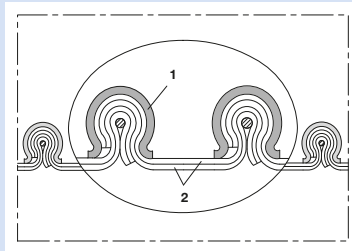


CONNECT 228



CONNECT 270-271

Overpressure and underpressure are recommended threshold operating values, products can be subjected to higher loads upon request. The bending radius is measured through the inside of the hose arch. Additional technical data at [www.norres.com](http://www.norres.com). The right to make technical modifications is reserved. All values determined at 20°C and are approx. data.



Electrically conductive clamp profile hose (clip hose), double-layer, highly chemical resistant (up to +170°C)

**Applications**

- flexible hose/ ducting for hot and cold gases and for dust, powder, fibres
- chemical industry: chemical vapours, vapour return hose at loading arm, paint steam, spray mist extraction
- explosion hazard area

**Properties**

- abrasion protection via external clamp profile
- secure clamping of the wall within the clamp profile
- highly flexible + compressible 4:1

- very good heat resistance
- anti-adhesive
- good resistance to alkalis and acids
- extremely good resistance to chemicals
- surface resistance PTFE film <math>10^6 \Omega</math>
- in accordance with ATEX 2014/34/EU (1999/92/EC) and German TRGS 727: aspiration of combustible dusts (Zone 22 inside), for use in zone 1 and 2 (gases), for use in Zone 0 (gases)
- conforms to RoHS guideline

**Temperature Range**

- 40°C to 170°C

**Design, Material**

CP construction

- clamp profile supporting spiral: all-stainless steel (INOX)
- wall: semi-conducting PTFE film interior, CSM coated polyester fabric exterior

**Delivery variants**

- further diameters and lengths available on request

I.D.	O.D.	Over-pressure	Under-pressure	Bending Radius	Weight	Dimensions in Stock	Order No.
in / mm	mm	bar	bar	mm	kg/m	m	
2 / 50-51	62	0,410	0,300	18	0,840	6	472-0050-1003
- / 55	67	0,390	0,280	20	0,910	6	472-0055-1003
2,36 / 60	72	0,370	0,250	20	0,990	6	472-0060-1003
2,5 / 63-65	77	0,355	0,230	22	1,060	6	472-0065-1003
- / 70	82	0,340	0,210	22	1,130	6	472-0070-1003
3 / 75-76	87	0,325	0,180	24	1,210	6	472-0075-1003
- / 80	92	0,315	0,160	24	1,290	6	472-0080-1003
3,5 / 89-90	102	0,290	0,110	26	1,430	6	472-0090-1003
4 / 100-102	112	0,195	0,100	28	1,160	6	472-0100-1003
- / 110	122	0,185	0,085	30	1,260	3 6	472-0110-1003
4,5 / 114-115	127	0,180	0,080	32	1,310	3 6	472-0115-1003
4,72 / 120	132	0,175	0,075	32	1,370	3 6	472-0120-1003
5 / 125-127	137	0,170	0,070	34	1,430	3 6	472-0125-1003
- / 130	142	0,165	0,060	34	1,480	3 6	472-0130-1003
5,5 / 140	152	0,160	0,050	36	1,590	3 6	472-0140-1003
6 / 150-152	162	0,110	0,040	38	1,190	3 6	472-0150-1003
6,3 / 160	172	0,105	0,035	40	1,270	3 6	472-0160-1003
6,5 / 165	177	0,100	0,035	41	1,310	3 6	472-0165-1003
- / 170	182	0,100	0,035	42	1,350	3 6	472-0170-1003
- / 175	187	0,100	0,030	44	1,380	3 6	472-0175-1003
7 / 178-180	192	0,095	0,030	44	1,420	3 6	472-0180-1003
8 / 200-203	212	0,090	0,025	48	1,580	3 6	472-0200-1003
- / 215	227	0,085	0,020	52	1,690	3 6	472-0215-1003
- / 225	237	0,085	0,020	54	1,770	3 6	472-0225-1003
9 / 228-229	240	0,085	0,020	54	1,795	3 6	472-0228-1003
- / 250	262	0,065	0,020	58	1,960	3 6	472-0250-1003
10 / 254	266	0,065	0,020	59	1,990	3 6	472-0254-1003
- / 275	287	0,060	0,015	64	2,150	3 6	472-0275-1003
11 / 280	292	0,060	0,015	65	2,190	3 6	472-0280-1003

Overpressure and underpressure are recommended threshold operating values, products can be subjected to higher loads upon request. The bending radius is measured through the inside of the hose arch. Additional technical data at [www.norres.com](http://www.norres.com). The right to make technical modifications is reserved. All values determined at 20°C and are approx. data.

I.D.	O.D.	Over-pressure	Under-pressure	Bending Radius	Weight	Dimensions in Stock	Order No.
in / mm	mm	bar	bar	mm	kg/m	m	
- / 300	312	0,055	0,010	68	2,340	<b>36</b>	472-0300-1003
12 / 305	317	0,055	0,010	69	2,380	<b>36</b>	472-0305-1003
- / 315	327	0,055	0,010	71	2,460	<b>36</b>	472-0315-1003
- / 325	337	0,055	0,010	74	2,530	<b>36</b>	472-0325-1003
13 / 330	342	0,050	0,010	75	2,570	<b>36</b>	472-0330-1003
- / 350	362	0,040	0,010	78	2,720	<b>36</b>	472-0350-1003
14 / 356	368	0,040	0,010	79	2,765	<b>36</b>	472-0356-1003
- / 375	387	0,040	0,010	83	2,910	<b>36</b>	472-0375-1003
- / 400	412	0,040	0,010	88	3,100	<b>36</b>	472-0400-1003
16 / 405-406	418	0,040	0,010	89	3,190	<b>36</b>	472-0406-1003
- / 450	462	0,035	0,005	98	3,870	<b>36</b>	472-0450-1003
18 / 457	469	0,035	0,005	100	3,870	<b>36</b>	472-0457-1003
- / 500	512	0,030	0,005	108	3,870	<b>36</b>	472-0500-1003
20 / 508	520	0,025	0,005	110	3,930	<b>36</b>	472-0508-1003
- / 600	612	0,020	0,005	128	4,630	<b>3</b>	472-0600-1003
24 / 610	622	0,020	0,005	130	4,705	<b>3</b>	472-0610-1003
- / 700	712	0,015	0,002	148	5,390	<b>3</b>	472-0700-1003
28 / 712	724	0,015	0,001	151	5,475	<b>3</b>	472-0712-1003
- / 750	762	0,015	0,001	158	5,750	<b>3</b>	472-0750-1003
- / 800	812	0,015	0,001	168	6,160	<b>3</b>	472-0800-1003
32 / 813-815	827	0,015	0,001	171	6,275	<b>3</b>	472-0815-1003
- / 900	912	0,015	0,001	188	6,920	<b>3</b>	472-0900-1003
36 / 915	927	0,015	0,001	191	7,035	<b>3</b>	472-0915-1003
- / 1000	1012	0,015	0,001	208	7,680	<b>3</b>	472-1000-1003
40 / 1016	1028	0,010	0,001	211	7,800	<b>3</b>	472-1016-1003

TEFLON® is a registered trademark of DuPont; Overpressure and underpressure are recommended threshold operating values, products can be subjected to higher loads upon request. The bending radius is measured through the inside of the hose arch. The right to make technical modifications is reserved. All values determined at 20°C and are approx. data. Additional technical data at [www.norres.com/en/technology/](http://www.norres.com/en/technology/)

### Accessories



CLAMP 212



CLAMP 217



CLAMP 213



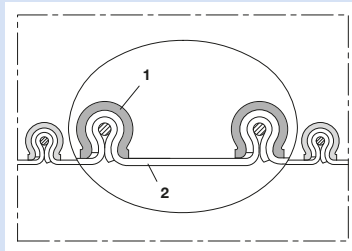
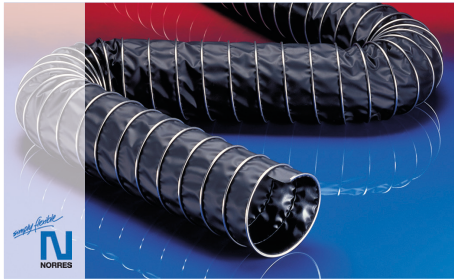
CONNECT 228



CONNECT 270-271

Overpressure and underpressure are recommended threshold operating values, products can be subjected to higher loads upon request. The bending radius is measured through the inside of the hose arch. Additional technical data at [www.norres.com](http://www.norres.com). The right to make technical modifications is reserved. All values determined at 20°C and are approx. data.





Electrically conductive clamp profile hose (clip hose), (up to +210°C)

**Applications**

- flexible hose/ ducting for hot and cold gases and for dust, powder, fibres
- chemical industry: chemical vapours, vapour return hose at loading arm, paint steam, spray mist extraction
- explosion hazard area
- bellows, compensators

**Properties**

- abrasion protection via external clamp profile
- secure clamping of the wall within the clamp profile

- highly flexible + compressible 4:1
- very good heat resistance
- good resistance to oil, gasoline and chemicals
- good resistance to alkalis and acids
- electrically conductive wall: electrical and surface resistance <math><10^4 \Omega</math>
- in accordance with ATEX 2014/34/EU (1999/92/EC) and German TRGS 727: aspiration of combustible dusts (Zone 22 inside), for use in zone 1 and 2 (gases), for use in Zone 0 (gases)
- conforms to RoHS guideline

**Temperature Range**

- 20°C to 210°C

**Design, Material**

CP construction

- clamp profile supporting spiral: galvanised steel
- wall: VITON® coated polyester fabric

**Delivery variants**

- further diameters and lengths available on request

I.D.	O.D.	Over-pressure	Under-pressure	Bending Radius	Weight	Dimensions in Stock	Order No.
in / mm	mm	bar	bar	mm	kg/m	m	
1,5 / 38	50	0,785	0,450	21	0,480	6	459-0038-0000
- / 40	52	0,765	0,440	22	0,530	6	459-0040-0000
2 / 50-51	62	0,630	0,380	25	0,640	6	459-0050-0000
- / 55	67	0,600	0,350	27	0,700	6	459-0055-0000
2,36 / 60	72	0,570	0,320	28	0,760	6	459-0060-0000
2,5 / 63-65	77	0,545	0,290	30	0,810	6	459-0065-0000
- / 70	82	0,525	0,260	31	0,870	6	459-0070-0000
3 / 75-76	87	0,500	0,230	33	0,930	6	459-0075-0000
- / 80	92	0,485	0,200	34	0,980	6	459-0080-0000
3,5 / 89-90	102	0,450	0,140	37	1,100	6	459-0090-0000
4 / 100-102	112	0,300	0,120	28	0,900	6	459-0100-0000
- / 110	122	0,285	0,105	30	0,980	3 6	459-0110-0000
4,5 / 114-115	127	0,275	0,097	32	1,025	3 6	459-0115-0000
4,72 / 120	132	0,270	0,090	32	1,070	3 6	459-0120-0000
5 / 125-127	137	0,260	0,085	34	1,110	3 6	459-0125-0000
- / 130	142	0,255	0,075	34	1,150	3 6	459-0130-0000
5,5 / 140	152	0,245	0,060	36	1,230	3 6	459-0140-0000
6 / 150-152	162	0,165	0,050	38	0,880	3 6	459-0150-0000
6,3 / 160	172	0,160	0,045	40	0,930	3 6	459-0160-0000
6,5 / 165	177	0,155	0,045	41	0,960	3 6	459-0165-0000
- / 170	182	0,155	0,040	42	0,990	3 6	459-0170-0000
- / 175	187	0,150	0,040	44	1,020	3 6	459-0175-0000
7 / 178-180	192	0,150	0,040	44	1,040	3 6	459-0180-0000
8 / 200-203	212	0,140	0,030	48	1,160	3 6	459-0200-0000
- / 215	227	0,135	0,030	52	1,240	3 6	459-0215-0000
- / 225	237	0,130	0,025	54	1,300	3 6	459-0225-0000
9 / 228-229	240	0,120	0,025	54	1,315	3 6	459-0228-0000
- / 250	262	0,100	0,025	58	1,440	3 6	459-0250-0000
10 / 254	266	0,095	0,025	59	1,460	3 6	459-0254-0000
- / 275	287	0,090	0,020	64	1,580	3 6	459-0275-0000

Overpressure and underpressure are recommended threshold operating values, products can be subjected to higher loads upon request. The bending radius is measured through the inside of the hose arch. Additional technical data at [www.norres.com](http://www.norres.com). The right to make technical modifications is reserved. All values determined at 20°C and are approx. data.



I.D.	O.D.	Over-pressure	Under-pressure	Bending Radius	Weight	Dimensions in Stock	Order No.
in / mm	mm	bar	bar	mm	kg/m	m	
11 / 280	292	0,090	0,020	65	1,610	3 6	459-0280-0000
- / 300	312	0,085	0,015	68	1,720	3 6	459-0300-0000
12 / 305	317	0,085	0,015	69	1,740	3 6	459-0305-0000
- / 315	327	0,085	0,015	71	1,780	3 6	459-0315-0000
- / 325	337	0,080	0,015	74	1,850	3 6	459-0325-0000
13 / 330	342	0,080	0,015	75	1,880	3 6	459-0330-0000
- / 350	362	0,065	0,015	78	2,000	3 6	459-0350-0000
14 / 356	368	0,065	0,015	79	2,030	3 6	459-0356-0000
- / 375	387	0,060	0,010	83	2,130	3 6	459-0375-0000
- / 400	412	0,060	0,010	88	2,280	3 6	459-0400-0000
16 / 405-406	418	0,060	0,010	89	2,315	3 6	459-0406-0000
- / 450	462	0,055	0,010	98	2,560	3 6	459-0450-0000
18 / 457	469	0,050	0,010	100	2,600	3 6	459-0457-0000
- / 500	512	0,050	0,005	108	2,840	3 6	459-0500-0000
20 / 508	520	0,035	0,005	110	2,885	3 6	459-0508-0000
- / 600	612	0,030	0,005	128	3,400	3	459-0600-0000
24 / 610	622	0,030	0,005	130	3,455	3	459-0610-0000
- / 700	712	0,025	0,002	148	3,960	3	459-0700-0000
28 / 712	724	0,025	0,002	151	4,030	3	459-0712-0000
- / 750	762	0,025	0,002	158	4,243	3	459-0750-0000
- / 800	812	0,025	0,002	168	4,520	3	459-0800-0000
32 / 813-815	827	0,025	0,001	171	4,605	3	459-0815-0000
- / 900	912	0,020	0,001	188	5,090	3	459-0900-0000
36 / 915	927	0,020	0,001	191	5,175	3	459-0915-0000
- / 1000	1012	0,020	0,001	208	5,650	3	459-1000-0000
40 / 1016	1028	0,020	0,001	211	5,740	3	459-1016-0000

VITON® is a registered trademark of DuPont; Overpressure and underpressure are recommended threshold operating values, products can be subjected to higher loads upon request. The bending radius is measured through the inside of the hose arch. The right to make technical modifications is reserved. All values determined at 20°C and are approx. data. Additional technical data at [www.norres.com/en/technology/](http://www.norres.com/en/technology/)

### Accessories



CLAMP 212



CLAMP 217



CLAMP 213

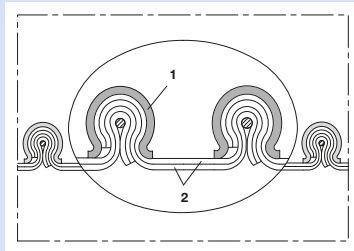


CONNECT 228



CONNECT 270-271

Overpressure and underpressure are recommended threshold operating values, products can be subjected to higher loads upon request. The bending radius is measured through the inside of the hose arch. Additional technical data at [www.norres.com](http://www.norres.com). The right to make technical modifications is reserved. All values determined at 20°C and are approx. data.



Clamp profile hose (clip hose), double-layer, highly chemical resistant (up to +270°C)

**Applications**

- flexible hose/ ducting for hot and cold gases and for dust, powder, fibres
- chemical industry: chemical vapours, vapour return hose at loading arm, paint steam, spray mist extraction

**Properties**

- abrasion protection via external clamp profile
- secure clamping of the wall within the clamp profile
- highly flexible + compressible 4:1

- very good heat resistance
- anti-adhesive
- good resistance to alkalis and acids
- extremely good resistance to chemicals
- conforms to RoHS guideline

**Temperature Range**

- 150°C to 250°C
- short time to 270°C

**Design, Material**

CP construction

- clamp profile supporting spiral: all-stainless steel (INOX)
- double-layer wall; wall: interior PTFE foil, exterior special-coated glass fabric

**Delivery variants**

- further diameters and lengths available on request

I.D.	O.D.	Over-pressure	Under-pressure	Bending Radius	Weight	Dimensions in Stock	Order No.
in / mm	mm	bar	bar	mm	kg/m	m	
2 / 50-51	62	0,410	0,300	18	0,610	6	471-0050-0000
- / 55	67	0,390	0,280	20	0,660	6	471-0055-0000
2,36 / 60	72	0,370	0,250	20	0,720	6	471-0060-0000
2,5 / 63-65	77	0,355	0,230	22	0,770	6	471-0065-0000
- / 70	82	0,340	0,210	22	0,830	6	471-0070-0000
3 / 75-76	87	0,325	0,180	24	0,880	6	471-0075-0000
- / 80	92	0,315	0,160	24	0,940	6	471-0080-0000
3,5 / 89-90	102	0,290	0,110	26	1,050	6	471-0090-0000
4 / 100-102	112	0,195	0,100	28	0,860	6	471-0100-0000
- / 110	122	0,185	0,085	30	0,950	3 6	471-0110-0000
4,5 / 114-115	127	0,180	0,080	31	0,990	3 6	471-0115-0000
4,72 / 120	132	0,175	0,075	32	1,030	3 6	471-0120-0000
5 / 125-127	137	0,170	0,070	34	1,070	3 6	471-0125-0000
- / 130	142	0,165	0,060	34	1,110	3 6	471-0130-0000
5,5 / 140	152	0,160	0,050	36	1,190	3 6	471-0140-0000
6 / 150-152	162	0,110	0,040	38	0,860	3 6	471-0150-0000
6,3 / 160	172	0,105	0,035	40	0,910	3 6	471-0160-0000
6,5 / 165	177	0,100	0,030	41	0,940	3 6	471-0165-0000
- / 170	182	0,100	0,030	42	0,970	3 6	471-0170-0000
- / 175	187	0,100	0,030	44	0,990	3 6	471-0175-0000
7 / 178-180	192	0,095	0,030	44	1,020	3 6	471-0180-0000
8 / 200-203	212	0,090	0,025	48	1,130	3 6	471-0200-0000
- / 215	227	0,085	0,020	52	1,210	3 6	471-0215-0000
- / 225	237	0,085	0,020	54	1,270	3 6	471-0225-0000
9 / 228-229	240	0,085	0,020	54	1,290	3 6	471-0228-0000
- / 250	262	0,065	0,020	58	1,400	3 6	471-0250-0000
10 / 254	266	0,065	0,020	60	1,430	3 6	471-0254-0000
- / 275	287	0,060	0,015	64	1,540	3 6	471-0275-0000
11 / 280	292	0,060	0,010	65	1,550	3 6	471-0280-0000
- / 300	312	0,055	0,010	68	1,680	3 6	471-0300-0000

Overpressure and underpressure are recommended threshold operating values, products can be subjected to higher loads upon request. The bending radius is measured through the inside of the hose arch. Additional technical data at [www.norres.com](http://www.norres.com). The right to make technical modifications is reserved. All values determined at 20°C and are approx. data.

I.D.	O.D.	Over-pressure	Under-pressure	Bending Radius	Weight	Dimensions in Stock	Order No.
in / mm	mm	bar	bar	mm	kg/m	m	
12 / 305	317	0,055	0,010	69	1,720	36	471-0305-0000
- / 315	327	0,055	0,010	71	1,780	36	471-0315-0000
- / 325	337	0,055	0,010	74	1,850	36	471-0325-0000
13 / 330	342	0,050	0,010	75	1,870	36	471-0330-0000
- / 350	362	0,040	0,010	78	1,950	36	471-0350-0000
14 / 356	368	0,040	0,010	80	1,990	36	471-0356-0000
- / 375	387	0,040	0,010	83	2,130	36	471-0375-0000
- / 400	412	0,040	0,010	88	2,230	36	471-0400-0000
16 / 405-406	418	0,040	0,010	90	2,260	36	471-0406-0000
- / 450	462	0,035	0,005	98	2,500	36	471-0450-0000
18 / 457	469	0,035	0,005	100	2,540	36	471-0457-0000
- / 500	512	0,030	0,005	108	2,770	36	471-0500-0000
20 / 508	520	0,025	0,005	110	2,810	36	471-0508-0000
- / 600	612	0,020	0,005	128	3,320	3	471-0600-0000
24 / 610	622	0,020	0,005	130	3,380	3	471-0610-0000
- / 700	712	0,015	0,002	148	3,870	3	471-0700-0000
28 / 712	724	0,015	0,002	151	3,940	3	471-0712-0000
- / 750	762	0,015	0,001	158	4,150	3	471-0750-0000
- / 800	812	0,015	0,001	168	4,420	3	471-0800-0000
32 / 813-815	827	0,015	0,001	171	4,520	3	471-0815-0000
- / 900	912	0,015	0,001	188	5,070	3	471-0900-0000
36 / 915	927	0,015	0,001	191	5,140	3	471-0915-0000
- / 1000	1012	0,015	0,001	208	5,510	3	471-1000-0000
40 / 1016	1028	0,010	0,005	213	5,580	3	471-1016-0000

TEFLON® is a registered trademark of DuPont; Overpressure and underpressure are recommended threshold operating values, products can be subjected to higher loads upon request. The bending radius is measured through the inside of the hose arch. The right to make technical modifications is reserved. All values determined at 20°C and are approx. data. Additional technical data at [www.norres.com/en/technology/](http://www.norres.com/en/technology/)

## Accessories



CLAMP 212



CLAMP 217



CLAMP 213

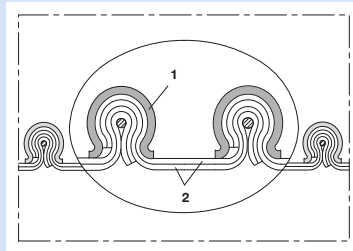


CONNECT 228



CONNECT 270-271

Overpressure and underpressure are recommended threshold operating values, products can be subjected to higher loads upon request. The bending radius is measured through the inside of the hose arch. Additional technical data at [www.norres.com](http://www.norres.com). The right to make technical modifications is reserved. All values determined at 20°C and are approx. data.



Electrically conductive clamp profile hose (clip hose), double-layer, highly chemical resistant (up to +270°C)

**Applications**

- flexible hose/ ducting for hot and cold gases and for dust, powder, fibres
- chemical industry: chemical vapours, vapour return hose at loading arm, paint steam, spray mist extraction
- explosion hazard area

**Properties**

- abrasion protection via external clamp profile
- secure clamping of the wall within the clamp profile
- highly flexible + compressible 4:1
- very good heat resistance

- anti-adhesive
- good resistance to alkalis and acids
- extremely good resistance to chemicals
- surface resistance PTFE film <math>10^8 \Omega</math>
- in accordance with ATEX 2014/34/EU (1999/92/EC) and German TRGS 727: aspiration of combustible dusts (Zone 22 inside), for use in zone 1 and 2 (gases), for use in Zone 0 (gases)
- conforms to RoHS guideline

**Temperature Range**

- 150°C to 250°C
- short time to 270°C

**Design, Material**

CP construction

- clamp profile supporting spiral: all-stainless steel (INOX)
- wall: interior semi-conducting PTFE foil, exterior special-coated glass fabric

**Delivery variants**

- further diameters and lengths available on request

I.D.	O.D.	Over-pressure	Under-pressure	Bending Radius	Weight	Dimensions in Stock	Order No.
in / mm	mm	bar	bar	mm	kg/m	m	
2 / 50-51	62	0,410	0,300	18	0,610	6	471-0050-1003
- / 55	67	0,390	0,280	20	0,660	6	471-0055-1003
2,36 / 60	72	0,370	0,250	20	0,720	6	471-0060-1003
2,5 / 63-65	77	0,355	0,230	22	0,770	6	471-0065-1003
- / 70	82	0,340	0,210	22	0,830	6	471-0070-1003
3 / 75-76	87	0,325	0,180	24	0,880	6	471-0075-1003
- / 80	92	0,315	0,160	24	0,940	6	471-0080-1003
3,5 / 89-90	102	0,290	0,110	26	1,050	6	471-0090-1003
4 / 100-102	112	0,195	0,100	28	0,860	6	471-0100-1003
- / 110	122	0,185	0,085	30	0,950	3 6	471-0110-1003
4,5 / 114-115	127	0,180	0,080	32	0,990	3 6	471-0115-1003
4,72 / 120	132	0,175	0,075	32	1,030	3 6	471-0120-1003
5 / 125-127	137	0,170	0,070	34	1,070	3 6	471-0125-1003
- / 130	142	0,165	0,060	34	1,110	3 6	471-0130-1003
5,5 / 140	152	0,160	0,050	36	1,190	3 6	471-0140-1003
6 / 150-152	162	0,110	0,040	38	0,860	3 6	471-0150-1003
6,3 / 160	172	0,105	0,035	40	0,910	3 6	471-0160-1003
6,5 / 165	177	0,100	0,035	41	0,940	3 6	471-0165-1003
- / 170	182	0,100	0,030	42	0,970	3 6	471-0170-1003
- / 175	187	0,100	0,030	44	0,990	3 6	471-0175-1003
7 / 178-180	192	0,095	0,030	44	1,020	3 6	471-0180-1003
8 / 200-203	212	0,090	0,025	48	1,130	3 6	471-0200-1003
- / 215	227	0,085	0,020	52	1,210	3 6	471-0215-1003
- / 225	237	0,085	0,020	54	1,270	3 6	471-0225-1003
9 / 228-229	240	0,085	0,020	54	1,285	3 6	471-0228-1003
- / 250	262	0,065	0,020	58	1,400	3 6	471-0250-1003
10 / 254	266	0,065	0,020	59	1,420	3 6	471-0254-1003
- / 275	287	0,060	0,015	64	1,540	3 6	471-0275-1003
11 / 280	292	0,060	0,015	65	1,570	3 6	471-0280-1003

Overpressure and underpressure are recommended threshold operating values, products can be subjected to higher loads upon request. The bending radius is measured through the inside of the hose arch. Additional technical data at [www.norres.com](http://www.norres.com). The right to make technical modifications is reserved. All values determined at 20°C and are approx. data.

I.D.	O.D.	Over-pressure	Under-pressure	Bending Radius	Weight	Dimensions in Stock	Order No.
in / mm	mm	bar	bar	mm	kg/m	m	
- / 300	312	0,055	0,010	68	1,680	36	471-0300-1003
12 / 305	317	0,055	0,010	69	1,715	36	471-0305-1003
- / 315	327	0,055	0,010	71	1,780	36	471-0315-1003
- / 325	337	0,055	0,010	74	1,850	36	471-0325-1003
13 / 330	342	0,050	0,010	75	1,870	36	471-0330-1003
- / 350	362	0,040	0,010	78	1,950	36	471-0350-1003
14 / 356	368	0,040	0,010	79	1,995	36	471-0356-1003
- / 375	387	0,040	0,010	83	2,130	36	471-0375-1003
- / 400	412	0,040	0,010	88	2,230	36	471-0400-1003
16 / 405-406	418	0,040	0,010	89	2,260	36	471-0406-1003
- / 450	462	0,035	0,005	98	2,500	36	471-0450-1003
18 / 457	469	0,035	0,005	100	2,540	36	471-0457-1003
- / 500	512	0,030	0,005	108	2,770	36	471-0500-1003
20 / 508	520	0,025	0,005	110	2,815	36	471-0508-1003
- / 600	612	0,020	0,005	128	3,320	3	471-0600-1003
24 / 610	622	0,020	0,005	130	3,375	3	471-0610-1003
- / 700	712	0,015	0,002	148	3,870	3	471-0700-1003
28 / 712	724	0,015	0,001	151	3,935	3	471-0712-1003
- / 750	762	0,015	0,001	158	4,150	3	471-0750-1003
- / 800	812	0,015	0,001	168	4,420	3	471-0800-1003
32 / 813-815	827	0,015	0,001	171	4,520	3	471-0815-1003
- / 900	912	0,015	0,001	188	5,070	3	471-0900-1003
36 / 915	927	0,015	0,001	191	5,135	3	471-0915-1003
- / 1000	1012	0,015	0,001	208	5,510	3	471-1000-1003
40 / 1016	1028	0,010	0,001	211	5,580	3	471-1016-1003

TEFLON® is a registered trademark of DuPont; Overpressure and underpressure are recommended threshold operating values, products can be subjected to higher loads upon request. The bending radius is measured through the inside of the hose arch. The right to make technical modifications is reserved. All values determined at 20°C and are approx. data. Additional technical data at [www.norres.com/en/technology/](http://www.norres.com/en/technology/)

Accessories



CLAMP 212



CLAMP 217



CLAMP 213

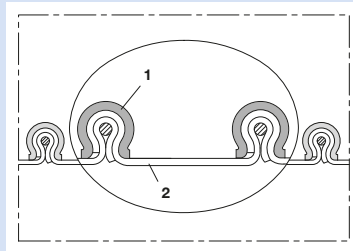
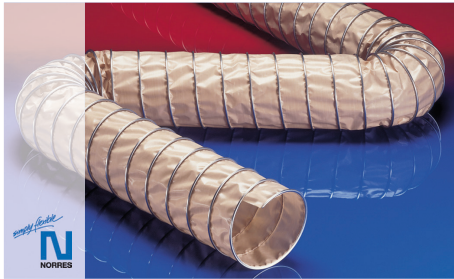


CONNECT 228



CONNECT 270-271

Overpressure and underpressure are recommended threshold operating values, products can be subjected to higher loads upon request. The bending radius is measured through the inside of the hose arch. Additional technical data at [www.norres.com](http://www.norres.com). The right to make technical modifications is reserved. All values determined at 20°C and are approx. data.



Clamp profile hose (clip hose), food hose and pharmaceutical hose, highly chemical resistant (up to +270°C)

**Applications**

- flexible hose/ ducting for hot and cold gases and for dust, powder, fibres
- food industry, pharmaceutical industry: foodstuff, pharmaceutical
- mixer, dryer, packaging machine, bulk-bag (big bag)-charging and discharging, mill
- extraction arm
- chemical industry: chemical vapours, vapour return hose at loading arm, paint steam, spray mist extraction
- paper mill, paper and pulp industry: waste water, air extraction

- secure clamping of the wall within the clamp profile
- highly flexible + compressible 4:1
- very good heat resistance
- Inside layer food quality complies with: EU-Directive 10/2011 and EC 1935/2004
- food grade wall, complies with: FDA 21 CFR 177.1550, German guideline XV BfR
- odourless and tasteless
- anti-adhesive
- good resistance to alkalis and acids
- extremely good resistance to chemicals
- manufacturing process acc. GMP EC 2023/2006
- conforms to RoHS guideline

**Temperature Range**

- 150°C to 250°C
- short time to 270°C

**Design, Material**

CP construction

- clamp profile supporting spiral: all-stainless steel (INOX)
- wall: PTFE coated glass fabric

**Delivery variants**

- further diameters and lengths available on request
- double-layer

**Properties**

- abrasion protection via external clamp profile

I.D.	O.D.	Over-pressure	Under-pressure	Bending Radius	Weight	Dimensions in Stock	Order No.
in / mm	mm	bar	bar	mm	kg/m	m	
2 / 50-51	62	0,410	0,270	18	0,570	6	475-0050-0000
- / 55	67	0,390	0,250	20	0,620	6	475-0055-0000
2,36 / 60	72	0,370	0,220	20	0,640	6	475-0060-0000
2,5 / 63-65	77	0,355	0,200	22	0,720	6	475-0065-0000
- / 70	82	0,340	0,180	22	0,770	6	475-0070-0000
3 / 75-76	87	0,325	0,160	24	0,820	6	475-0075-0000
- / 80	92	0,315	0,140	24	0,880	6	475-0080-0000
3,5 / 89-90	102	0,290	0,100	26	0,980	6	475-0090-0000
4 / 100-102	112	0,195	0,085	28	0,820	6	475-0100-0000
- / 110	122	0,185	0,075	30	0,900	36	475-0110-0000
4,5 / 114-115	127	0,180	0,070	32	0,940	36	475-0115-0000
4,72 / 120	132	0,175	0,065	32	0,980	36	475-0120-0000
5 / 125-127	137	0,170	0,060	34	1,020	36	475-0125-0000
- / 130	142	0,165	0,055	34	1,060	36	475-0130-0000
5,5 / 140	152	0,160	0,040	36	1,140	36	475-0140-0000
6 / 150-152	162	0,110	0,035	38	0,760	36	475-0150-0000
6,3 / 160	172	0,105	0,030	40	0,810	36	475-0160-0000
6,5 / 165	177	0,100	0,030	41	0,830	36	475-0165-0000
- / 170	182	0,100	0,030	42	0,850	36	475-0170-0000
- / 175	187	0,100	0,030	44	0,880	36	475-0175-0000
7 / 178-180	192	0,095	0,025	44	0,900	36	475-0180-0000
8 / 200-203	212	0,090	0,020	48	1,000	36	475-0200-0000
- / 215	227	0,085	0,020	52	1,070	36	475-0215-0000
- / 225	237	0,085	0,020	54	1,120	36	475-0225-0000
9 / 228-229	240	0,085	0,020	54	1,135	36	475-0228-0000
- / 250	262	0,065	0,015	58	1,240	36	475-0250-0000
10 / 254	266	0,065	0,015	59	1,260	36	475-0254-0000

Overpressure and underpressure are recommended threshold operating values, products can be subjected to higher loads upon request. The bending radius is measured through the inside of the hose arch. Additional technical data at [www.norres.com](http://www.norres.com). The right to make technical modifications is reserved. All values determined at 20°C and are approx. data.



I.D.	O.D.	Over-pressure	Under-pressure	Bending Radius	Weight	Dimensions in Stock	Order No.
in / mm	mm	bar	bar	mm	kg/m	m	
- / 275	287	0,060	0,015	64	1,360	3 6	475-0275-0000
11 / 280	292	0,060	0,015	65	1,385	3 6	475-0280-0000
- / 300	312	0,055	0,010	68	1,480	3 6	475-0300-0000
12 / 305	317	0,055	0,010	69	1,505	3 6	475-0305-0000
- / 315	327	0,055	0,010	71	1,560	3 6	475-0315-0000
- / 325	337	0,055	0,010	74	1,650	3 6	475-0325-0000
13 / 330	342	0,050	0,010	75	1,665	3 6	475-0330-0000
- / 350	362	0,040	0,010	78	1,730	3 6	475-0350-0000
14 / 356	368	0,040	0,010	79	1,785	3 6	475-0356-0000
- / 375	387	0,040	0,010	83	1,950	3 6	475-0375-0000
- / 400	412	0,040	0,005	88	1,970	3 6	475-0400-0000
16 / 405-406	418	0,040	0,005	89	2,000	3 6	475-0406-0000
- / 450	462	0,035	0,005	98	2,210	3 6	475-0450-0000
18 / 457	469	0,035	0,005	100	2,245	3 6	475-0457-0000
- / 500	512	0,030	0,005	108	2,450	3 6	475-0500-0000
20 / 508	520	0,025	0,005	110	2,490	3 6	475-0508-0000
- / 600	612	0,020	0,005	128	2,940	3	475-0600-0000
24 / 610	622	0,020	0,005	130	2,990	3	475-0610-0000
- / 700	712	0,015	0,002	148	3,420	3	475-0700-0000
28 / 712	724	0,015	0,001	151	3,480	3	475-0712-0000
- / 750	762	0,015	0,001	158	3,660	3	475-0750-0000
- / 800	812	0,015	0,001	168	3,910	3	475-0800-0000
32 / 813-815	827	0,015	0,001	171	4,010	3	475-0815-0000
- / 900	912	0,015	0,001	188	4,580	3	475-0900-0000
36 / 915	927	0,015	0,001	191	4,625	3	475-0915-0000
- / 1000	1012	0,015	0,001	208	4,880	3	475-1000-0000
40 / 1016	1028	0,010	0,001	211	4,930	3	475-1016-0000

TEFLON® is a registered trademark of DuPont; Overpressure and underpressure are recommended threshold operating values, products can be subjected to higher loads upon request. The bending radius is measured through the inside of the hose arch. The right to make technical modifications is reserved. All values determined at 20°C and are approx. data. Additional technical data at [www.norres.com/en/technology/](http://www.norres.com/en/technology/)

Accessories



CLAMP 212



CLAMP 217



CLAMP 213



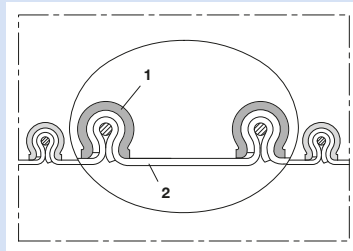
CONNECT 228



CONNECT 270-271

Overpressure and underpressure are recommended threshold operating values, products can be subjected to higher loads upon request. The bending radius is measured through the inside of the hose arch. Additional technical data at [www.norres.com](http://www.norres.com). The right to make technical modifications is reserved. All values determined at 20°C and are approx. data.





Electrically conductive clamp profile hose (clip hose), highly chemical resistant (up to +270°C)

**Applications**

- flexible hose/ ducting for hot and cold gases and for dust, powder, fibres
- extraction arm
- chemical industry: chemical vapours, vapour return hose at loading arm, paint steam, spray mist extraction
- explosion hazard area

**Properties**

- abrasion protection via external clamp profile
- secure clamping of the wall within the clamp profile
- highly flexible + compressible 4:1
- very good heat resistance

- anti-adhesive
- good resistance to alkalis and acids
- extremely good resistance to chemicals
- surface resistance PTFE film <math>10^8 \Omega</math>
- in accordance with ATEX 2014/34/EU (1999/92/EC) and German TRGS 727: aspiration of combustible dusts (Zone 22 inside), for use in zone 1 and 2 (gases), for use in Zone 0 (gases)
- conforms to RoHS guideline

**Temperature Range**

- 150°C to 250°C
- short time to 270°C

**Design, Material**

CP construction

- clamp profile supporting spiral: all-stainless steel (INOX)
- wall: PTFE coated glass fabric

**Delivery variants**

- further diameters and lengths available on request
- black (standard)
- double-layer

I.D.	O.D.	Over-pressure	Under-pressure	Bending Radius	Weight	Dimensions in Stock	Order No.
in / mm	mm	bar	bar	mm	kg/m	m	
2 / 50-51	62	0,410	0,270	18	0,570	6	475-0050-1003
- / 55	67	0,390	0,250	20	0,620	6	475-0055-1003
2,36 / 60	72	0,370	0,220	20	0,640	6	475-0060-1003
2,5 / 63-65	77	0,355	0,200	22	0,720	6	475-0065-1003
- / 70	82	0,340	0,180	22	0,770	6	475-0070-1003
3 / 75-76	87	0,325	0,160	24	0,820	6	475-0075-1003
- / 80	92	0,315	0,140	24	0,880	6	475-0080-1003
3,5 / 89-90	102	0,290	0,100	26	0,980	6	475-0090-1003
4 / 100-102	112	0,195	0,085	28	0,820	6	475-0100-1003
- / 110	122	0,185	0,075	30	0,900	3 6	475-0110-1003
4,5 / 114-115	127	0,180	0,070	31	0,940	3 6	475-0115-1003
4,72 / 120	132	0,175	0,065	32	0,980	3 6	475-0120-1003
5 / 125-127	137	0,170	0,060	34	1,020	3 6	475-0125-1003
- / 130	142	0,165	0,055	34	1,060	3 6	475-0130-1003
5,5 / 140	152	0,160	0,040	36	1,140	3 6	475-0140-1003
6 / 150-152	162	0,110	0,035	38	0,760	3 6	475-0150-1003
6,3 / 160	172	0,105	0,030	40	0,810	3 6	475-0160-1003
6,5 / 165	177	0,100	0,030	41	0,830	3 6	475-0165-1003
- / 170	182	0,100	0,030	42	0,850	3 6	475-0170-1003
- / 175	187	0,100	0,030	44	0,880	3 6	475-0175-1003
7 / 178-180	192	0,095	0,025	44	0,900	3 6	475-0180-1003
8 / 200-203	212	0,090	0,020	48	1,000	3 6	475-0200-1003
- / 215	227	0,085	0,020	52	1,070	3 6	475-0215-1003
- / 225	237	0,085	0,020	54	1,120	3 6	475-0225-1003
9 / 228-229	240	0,085	0,020	54	1,135	3 6	475-0228-1003
- / 250	262	0,065	0,015	58	1,240	3 6	475-0250-1003
10 / 254	266	0,065	0,015	59	1,260	3 6	475-0254-1003
- / 275	287	0,060	0,015	64	1,360	3 6	475-0275-1003

Overpressure and underpressure are recommended threshold operating values, products can be subjected to higher loads upon request. The bending radius is measured through the inside of the hose arch. Additional technical data at [www.norres.com](http://www.norres.com). The right to make technical modifications is reserved. All values determined at 20°C and are approx. data.

I.D.	O.D.	Over-pressure	Under-pressure	Bending Radius	Weight	Dimensions in Stock	Order No.
in / mm	mm	bar	bar	mm	kg/m	m	
11 / 280	292	0,060	0,015	65	1,385	<b>36</b>	475-0280-1003
- / 300	312	0,055	0,010	68	1,480	<b>36</b>	475-0300-1003
12 / 305	317	0,055	0,010	69	1,505	<b>36</b>	475-0305-1003
- / 315	327	0,055	0,010	71	1,560	<b>36</b>	475-0315-1003
- / 325	337	0,055	0,010	74	1,650	<b>36</b>	475-0325-1003
13 / 330	342	0,050	0,010	75	1,665	<b>36</b>	475-0330-1003
- / 350	362	0,040	0,010	78	1,730	<b>36</b>	475-0350-1003
14 / 356	368	0,040	0,010	79	1,785	<b>36</b>	475-0356-1003
- / 375	387	0,040	0,010	83	1,950	<b>36</b>	475-0375-1003
- / 400	412	0,040	0,005	88	1,970	<b>36</b>	475-0400-1003
16 / 405-406	418	0,040	0,005	89	2,000	<b>36</b>	475-0406-1003
- / 450	462	0,035	0,005	98	2,210	<b>36</b>	475-0450-1003
18 / 457	469	0,035	0,005	100	2,245	<b>36</b>	475-0457-1003
- / 500	512	0,030	0,005	108	2,450	<b>36</b>	475-0500-1003
20 / 508	520	0,025	0,005	110	2,490	<b>36</b>	475-0508-1003
- / 600	612	0,020	0,005	128	2,940	<b>3</b>	475-0600-1003
24 / 610	622	0,020	0,005	130	2,990	<b>3</b>	475-0610-1003
- / 700	712	0,015	0,002	148	3,420	<b>3</b>	475-0700-1003
28 / 712	724	0,015	0,001	151	3,480	<b>3</b>	475-0712-1003
- / 750	762	0,015	0,001	158	3,660	<b>3</b>	475-0750-1003
- / 800	812	0,015	0,001	168	3,910	<b>3</b>	475-0800-1003
32 / 813-815	827	0,015	0,001	171	4,010	<b>3</b>	475-0815-1003
- / 900	912	0,015	0,001	188	4,580	<b>3</b>	475-0900-1003
36 / 915	927	0,015	0,001	191	4,625	<b>3</b>	475-0915-1003
- / 1000	1012	0,015	0,001	208	4,880	<b>3</b>	475-1000-1003
40 / 1016	1028	0,010	0,001	211	4,930	<b>3</b>	475-1016-1003

Overpressure and underpressure are recommended threshold operating values, products can be subjected to higher loads upon request. The bending radius is measured through the inside of the hose arch. The right to make technical modifications is reserved. All values determined at 20°C and are approx. data. Additional technical data at [www.norres.com/en/technology/](http://www.norres.com/en/technology/)

### Accessories



CLAMP 212



CLAMP 217



CLAMP 213

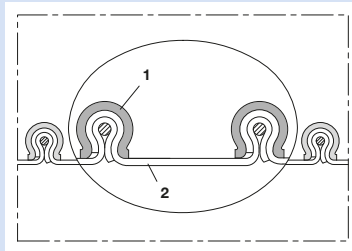
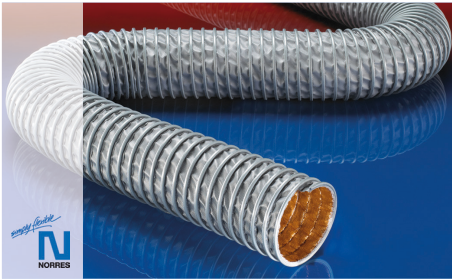


CONNECT 228



CONNECT 270-271

Overpressure and underpressure are recommended threshold operating values, products can be subjected to higher loads upon request. The bending radius is measured through the inside of the hose arch. Additional technical data at [www.norres.com](http://www.norres.com). The right to make technical modifications is reserved. All values determined at 20°C and are approx. data.



High-temperature hose, clamp profile hose (clip hose), (up to +400°C)

**Applications**

- flexible hose/ ducting for hot and cold gases
- vehicle gas exhaust system, car gas extraction: hose reel, slotted floor channel, underfloor extraction system
- engine test bench, exhaust gas measurement
- chemical industry: chemical vapours, vapour return hose at loading arm, paint steam, spray mist extraction
- high temperature extraction: oven, foundry, furnace, smelting, ceramics industry, glass industry, steel plant, aluminium mill
- bellows, compensators

**Properties**

- abrasion protection via external clamp profile
- secure clamping of the wall within the clamp profile
- highly flexible + compressible 4:1
- very good heat resistance
- good resistance to alkalis and acids
- extremely good resistance to chemicals
- conforms to RoHS guideline

**Temperature Range**

- 60°C to 400°C

**Design, Material**

CP construction

- clamp profile supporting spiral: galvanised steel
- Wall: Kapton® laminated glass fabric

**Delivery variants**

- further diameters and lengths available on request
- stainless steel (INOX) clamp profile

I.D.	O.D.	Over-pressure	Under-pressure	Bending Radius	Weight	Dimensions in Stock	Order No.
in / mm	mm	bar	bar	mm	kg/m	m	
2 / 50-51	62	0,520	0,370	18	0,680	6	476-0050-0000
- / 55	67	0,495	0,340	20	0,740	6	476-0055-0000
2,36 / 60	72	0,475	0,310	20	0,800	6	476-0060-0000
2,5 / 63-65	77	0,455	0,285	22	0,860	6	476-0065-0000
- / 70	82	0,435	0,255	22	0,920	6	476-0070-0000
3 / 75-76	87	0,415	0,225	24	0,980	6	476-0075-0000
- / 80	92	0,400	0,210	24	1,040	6	476-0080-0000
3,5 / 89-90	102	0,370	0,195	26	1,160	6	476-0090-0000
4 / 100-102	112	0,250	0,160	28	0,950	6	476-0100-0000
- / 110	122	0,235	0,130	30	1,040	3 6	476-0110-0000
4,5 / 114-115	127	0,230	0,120	32	1,090	3 6	476-0115-0000
4,72 / 120	132	0,225	0,113	32	1,130	3 6	476-0120-0000
5 / 125-127	137	0,215	0,105	34	1,180	3 6	476-0125-0000
- / 130	142	0,210	0,090	34	1,220	3 6	476-0130-0000
5,5 / 140	152	0,200	0,075	36	1,310	3 6	476-0140-0000
6 / 150-152	162	0,140	0,070	38	0,950	3 6	476-0150-0000
6,3 / 160	172	0,135	0,056	40	1,010	3 6	476-0160-0000
6,5 / 165	177	0,130	0,056	41	1,040	3 6	476-0165-0000
- / 170	182	0,130	0,056	42	1,070	3 6	476-0170-0000
- / 175	187	0,125	0,048	44	1,100	3 6	476-0175-0000
7 / 178-180	192	0,125	0,048	44	1,130	3 6	476-0180-0000
8 / 200-203	212	0,115	0,040	48	1,250	3 6	476-0200-0000
- / 215	227	0,110	0,032	52	1,340	3 6	476-0215-0000
- / 225	237	0,105	0,032	54	1,400	3 6	476-0225-0000
9 / 228-229	240	0,105	0,030	54	1,460	3 6	476-0228-0000
- / 250	262	0,080	0,027	58	1,560	3 6	476-0250-0000
10 / 254	266	0,080	0,025	60	1,590	3 6	476-0254-0000
- / 275	287	0,075	0,020	64	1,710	3 6	476-0275-0000
11 / 280	292	0,075	0,020	65	1,740	3 6	476-0280-0000

Overpressure and underpressure are recommended threshold operating values, products can be subjected to higher loads upon request. The bending radius is measured through the inside of the hose arch. Additional technical data at [www.norres.com](http://www.norres.com). The right to make technical modifications is reserved. All values determined at 20°C and are approx. data.

I.D.	O.D.	Over-pressure	Under-pressure	Bending Radius	Weight	Dimensions in Stock	Order No.
in / mm	mm	bar	bar	mm	kg/m	m	
- / 300	312	0,070	0,016	68	1,860	36	476-0300-0000
12 / 305	317	0,070	0,016	69	1,890	36	476-0305-0000
- / 315	327	0,070	0,016	71	1,950	36	476-0315-0000
- / 325	337	0,065	0,015	74	2,030	36	476-0325-0000
13 / 330	342	0,065	0,015	75	2,070	36	476-0330-0000
- / 350	362	0,055	0,015	78	2,160	36	476-0350-0000
14 / 356	368	0,050	0,015	80	2,190	36	476-0356-0000
- / 375	387	0,050	0,012	83	2,260	36	476-0375-0000
- / 400	412	0,050	0,012	88	2,470	36	476-0400-0000
16 / 405-406	418	0,050	0,012	90	2,510	36	476-0406-0000
- / 450	462	0,045	0,005	98	2,770	36	476-0450-0000
18 / 457	469	0,045	0,005	100	2,810	36	476-0457-0000
- / 500	512	0,040	0,005	110	3,070	36	476-0500-0000
20 / 508	520	0,030	0,005	110	3,120	36	476-0508-0000
- / 600	612	0,025	0,005	130	3,680	3	476-0600-0000
24 / 610	622	0,025	0,005	130	3,740	3	476-0610-0000
- / 700	712	0,020	0,002	151	4,290	3	476-0700-0000
28 / 712	724	0,020	0,002	151	4,360	3	476-0712-0000
- / 750	762	0,020	0,001	158	4,600	3	476-0750-0000
- / 800	812	0,020	0,001	168	4,900	3	476-0800-0000
32 / 813-815	827	0,020	0,001	171	4,990	3	476-0815-0000
- / 900	912	0,020	0,001	188	5,500	3	476-0900-0000
36 / 915	927	0,015	0,001	191	5,590	3	476-0915-0000
- / 1000	1012	0,015	0,001	208	6,110	3	476-1000-0000
40 / 1016	1028	0,015	0,001	213	6,200	3	476-1016-0000

Kapton® is a registered trademark of DuPont; Overpressure and underpressure are recommended threshold operating values, products can be subjected to higher loads upon request. The bending radius is measured through the inside of the hose arch. The right to make technical modifications is reserved. All values determined at 20°C and are approx. data. Additional technical data at [www.norres.com/en/technology/](http://www.norres.com/en/technology/)

Accessories



CLAMP 212



CLAMP 217



CLAMP 213



CONNECT 228



CONNECT 270-271

Overpressure and underpressure are recommended threshold operating values, products can be subjected to higher loads upon request. The bending radius is measured through the inside of the hose arch. Additional technical data at [www.norres.com](http://www.norres.com). The right to make technical modifications is reserved. All values determined at 20°C and are approx. data.



● Manufacture, warehouse, distribution ● Warehouse, distribution



**NORRES Schlauchtechnik GmbH**

Am Stadthafen 12-16  
45881 Gelsenkirchen  
GERMANY  
Phone +49 209 8 00 00 0  
Fax +49 209 8 00 00 99 99  
E-Mail info@norres.de  
www.norres.com

**NORRES UK LTD**

Unit 10, Mount Street Business Park  
Nechells, Birmingham, B7 5QU  
UNITED KINGDOM  
Phone +44 121 328 5426  
E-Mail info@norres.co.uk  
www.norres.co.uk

**NORRES France SARL**

27 D rue des Blancs Monts  
Z.A.C. Les Blancs Monts  
51350 Cormontreuil  
FRANCE  
Phone +33 3 26 35 95 41  
E-Mail info@norres.fr  
www.norres.fr

**NORRES North America Inc.**

2520 Foundation Drive  
South Bend, IN 46628  
UNITED STATES  
Phone +1 574 232 90 61  
Toll Free +1 855 NORRES 0  
E-Mail info@norres.us  
www.norres.us

**NORRES Polska Sp. z o.o.**

ul. Rolna 9  
Sady k. Poznania  
62-080 Tarnowo Podgórne  
POLAND  
Phone +48 61 293 31 80  
E-Mail info@norres.pl  
www.norres.pl

**NORRES Czech s.r.o**

Novoveská 552/5j  
709 00 Ostrava, Mariánské Hory  
CZECH REPUBLIC  
Phone +420 555 501 902  
E-Mail info@norres.cz  
www.norres.cz

**NORRES Hose Technology (Shanghai) Co., Ltd.**

诺锐软管科技（上海）有限公司  
上海浦东新区上丰路955号4幢一层西首  
West of Floor 1, Building 4, No. 955,  
Shang Feng Rd., Pudong, 201201 Shanghai  
P.R. CHINA  
Phone +86 21 50308958  
E-Mail info@norres.cn  
www.norres.cn www.sh-norres.com

**NORRES Taiwan Co., Ltd.**

台灣諾銳有限公司  
桃園市蘆竹區經國路892號5樓  
5F., No. 892, Jingguo Rd., Luzhu Dist.  
Taoyuan City 33858  
TAIWAN (R.O.C.)  
Phone +886 3 356 0696  
E-Mail info@norres.tw  
www.norres.tw

